

OptraFine[®]

Efficient polishing of ceramic restorations

Smooth surfaces
with a lush lustre



OptraFine®

Efficient polishing of ceramic restorations

Advanced polishing instruments for high-quality ceramic polishing at the chairside

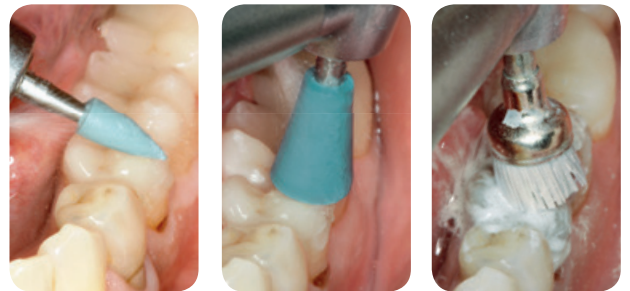
OptraFine® is a highly efficient diamond polishing system. The instruments have been especially designed to meet the high esthetic requirements of ceramic polishing. All the OptraFine polishing instruments and the high-gloss polishing paste feature a high content of diamond particles to enable especially smooth surfaces. With OptraFine, a highly esthetic lustrous gloss and virtually perfect polishing results can be rapidly achieved.

Ideally coordinated with ceramic materials

- Highly efficient polishing system
- Suitable for various ceramic materials (e.g. IPS Empress® CAD and IPS e.max® CAD)
- Especially smooth surface finish

Professional result – in 3 steps

- Step 1: Pre-polishing using “light blue”
- Step 2: Polishing using “dark blue”
- Step 3: High-gloss polishing with brushes and polishing paste



Dr Lukas Enggist, Ivoclar Vivadent, Schaan

Long-lasting and economical

- High wear resistance
- Autoclavable and reusable
- Cost-saving
- 3 shapes to suit various areas of application



Delivery forms:



This product forms part of the "Direct Restoratives" product category. Products from this category are optimally coordinated with each other.

Assortment

Polishing tips, coarse grit (F):

- flame (2 x)
- cup (2 x)
- disc (2 x)

Brushes (6 x)
Polishing paste (1 x)

Polishing tips, fine grit (P):

- flame (2 x)
- cup (2 x)
- disc (2 x)

Refills

Each polishing instrument is available individually or in packages of 10. The polishing paste is offered in single syringes.