

IPS InLine®

IPS InLine® Conventional Metal-Ceramic

IPS InLine® One One-Layer Metal-Ceramic

IPS InLine® PoM Press-on-Metal Ceramic



Make it InLine!

IPS InLine[®] Metal-Ceramic System

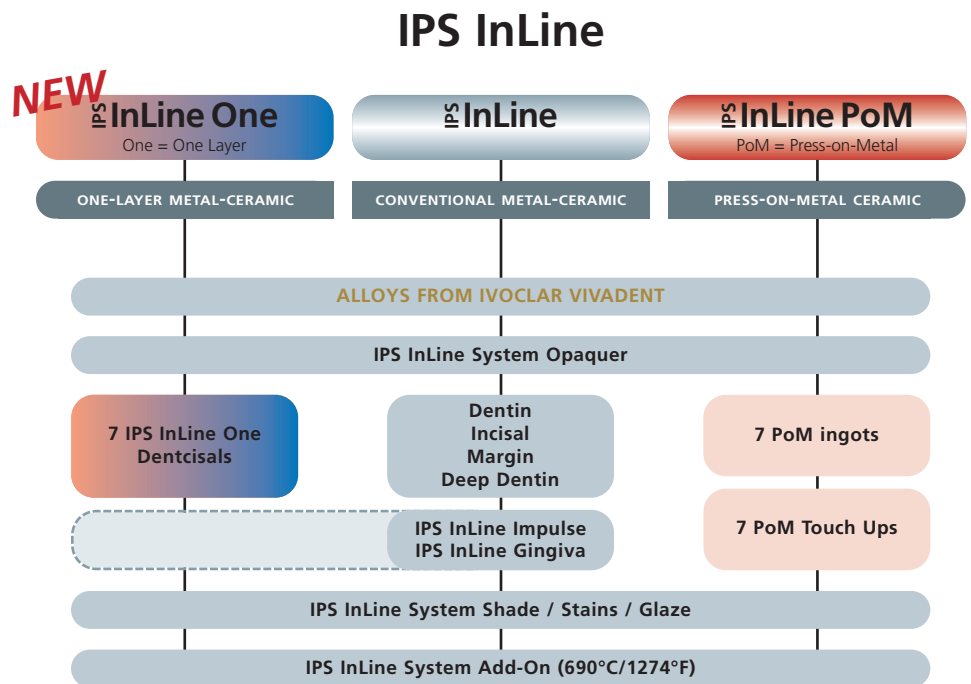
You're free to choose!

Streamline your working procedures and increase the productivity and economic efficiency in your laboratory.

With the **IPS InLine** metal-ceramic system, you will have the flexibility required for today's laboratory work – from simple layering to highly esthetic veneers.

The IPS InLine metal-ceramic system permits the fabrication of restorations shaded according to A-D, Chromascop and Bleach shade guides.

After applying the opaquer, you select the suitable product and processing procedure based on your personal preferences and the requirements of the individual case:



The **IPS InLine family** gives you the choice of various system components that can be applied with all three techniques. For instance, you can use the same opaquer for the one-layer metal-ceramic and for the press ceramic. Given the compatible system components, the metal-ceramic system remains slim and still offers extensive flexibility of application.

Learn a new way to process metal-ceramic.

IPS InLine[®]

IPS InLine One:

Modern one-layer ceramic for quick and efficient layering



IPS InLine:

Conventional metal-ceramic for traditional, individualized layering



IPS InLine PoM:

Press-on-Metal ceramic for accurately fitting, fully anatomical press-on procedures



A close partnership.

The IPS InLine metal-cera range from Ivoclar Vivadent

Outstanding compatibility of the products used is the best prerequisite for durable esthetic restorations.

Therefore, alloys that are ideally coordinated with the IPS InLine metal-ceramics are a matter of course for us.

Ivoclar Vivadent looks back on more than a century of experience in manufacturing high-quality, biocompatible dental alloys. We thus set the standard for purity, service and performance.

A wide selection of alloys is available, ranging from high-gold to reduced-gold and palladium-based to predominantly base metal alloys – depending on the indication and requirements of the patient. Furthermore, you will be certain that you work with tried-and-tested high-quality alloy products.



mic system and the alloy ent

Ivoclar Vivadent alloys

	IPS InLine	IPS InLine PoM	
	IPS InLine One	investment ring 100+200 g	investment ring 300 g
High-gold			
Brite Gold	✓	-	-
Brite Gold XH	✓	-	-
Golden Ceramic	✓	-	-
Aquarius Hard	✓	✓	✓
Aquarius	✓	-	-
IPS d.SIGN 98	✓	✓	-
Y	✓	-	-
Aquarius XH	✓	✓	✓
Y-2	✓	-	-
Y-Lite	✓	✓	✓
Sagittarius	✓	✓	✓
Y-1	✓	-	-
IPS d.SIGN 96	✓	✓	-
Reduced-gold			
IPS d.SIGN 91	✓	✓	✓
W	✓	-	-
W-5	✓	-	-
Lodestar	✓	✓	✓
W-3	✓	✓	✓
Leo	✓	✓	✓
W-2	✓	✓	✓
Palladium-based			
Capricorn 15	✓	-	-
IPS d.SIGN 84	✓	✓	✓
Capricorn	✓	✓	✓
Protocol	✓	✓	✓
IPS d.SIGN 67	✓	-	-
Spartan Plus	✓	✓	-
Spartan	✓	✓	-
Aries	✓	-	-
IPS d.SIGN 59	✓	-	-
IPS d.SIGN 53	✓	-	-
W-1	✓	-	-
Callisto CP+	✓	✓	✓
Implant alloys			
Callisto Implant 78	✓	✓	✓
IS-64	✓	-	-
Callisto Implant 60	✓	-	-
Base-metal alloys			
Pisces Plus	✓	✓	✓
4all	✓	✓	✓
IPS d.SIGN 15	✓	✓	✓
IPS d.SIGN 30	✓	✓	✓
Colado CC	✓	✓	✓

The range of available alloys may vary from country to country.

IPS InLine® One – o

IPS InLine One is a modern one-layer me layering on the most popular ceramic all

USER-FRIENDLY

The layering materials of IPS InLine One are called **IPS InLine Dencisal**. They are a combination of **Dentin** and **Incisal** materials with properties which impress users in terms of chroma and translucency. The balanced coordination of translucency and shade saturation combines the optical properties of dentin and incisal materials.



APPEALING

The IPS InLine Dencisal materials are available in 6 shades and 1 BL shade. The 7 different shades enable you to fabricate esthetic restorations with minimum effort. IPS InLine One restorations demonstrate a consistent, true-to-nature shade. Additionally, characterizations may be applied using the existing IPS InLine Shade and Stains materials.

MODERN

IPS InLine One materials are easy to apply and do not require any special knowledge about layering techniques. The use of IPS InLine Dencisal as the sole component that is used for both the dentin and incisal build-up helps you achieve time savings of up to 30%. Thus, IPS InLine One meets the trend of our time towards performance and economic efficiency.

Combination table

Opaquers A–D	BL1, BL2, BL3, BL4	A1, B1	A2, B2, C1, D2	A3, A3.5	B3, B4	C2, D3, D4	A4, C3, C4
Opaquers Chromascop		110, 120 130, 140	210, 220 230, 240		310, 320, 330, 340	410, 420, 430, 440	510, 520, 530, 540
IPS InLine One Dencisal							

One-Layer Metal-Ceramic

One-layer metal-ceramic for quick and efficient restorations



Oxidized framework



After the Opaquer firing

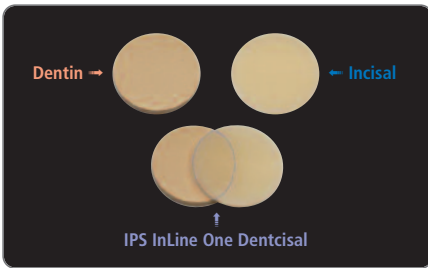


Apply IPS InLine Dencisal and fire



Individually designed and characterized bridge made of IPS InLine One

Time-saving and efficient – Restorations made of IPS InLine One



IPS InLine[®] – Conventional M

IPS InLine One is a conventional metal-ceramic for individual ceramic alloys.

ACCURATE
shade matching.

With IPS InLine, you can facilitate the application of the opaquer and layers of dentin and incisal materials to achieve consistent shade reproduction.

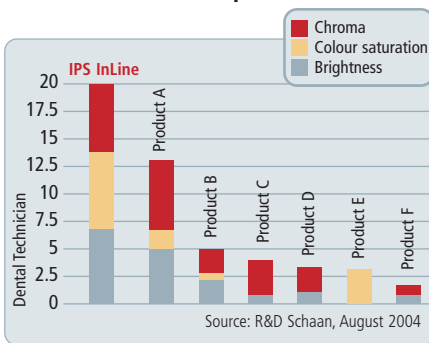
The result is excellent shade matching with minimal time and effort.

FAST
results.

IPS InLine is an economical and efficient option for a variety of clinical applications. Given the favourable firing properties of the ceramic, restorations can be completed with one to two main firings.

IPS InLine shows optimal sintering behaviour. Extensive corrective firings are a thing of the past.

Shade match in comparison



1st main firing



2nd main firing



Coordinated firing programs

The firing programs and parameters for the IPS InLine ceramic materials and alloys are already stored in the software of the Ivoclar Vivadent ceramic furnaces (Programat P300, P500, P700). Trust the Programat technology for excellent firing results.



etal-Ceramic

IPS InLine

Conventional
Metal-Ceramic

vidual, traditional layering on the most popular

BEAUTIFUL restorations.

Restorations made of IPS InLine ceramic materials impress users with their overall optical effect. Moreover, there are various additional materials to achieve special effects.

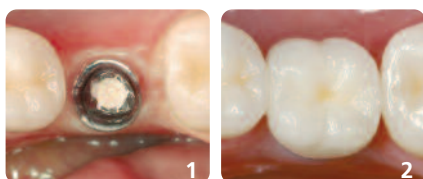
For example, individual details and special shade characteristics can be easily reproduced using the Opal and Translucent materials.

The four modern Bleach shades BL1, BL2, BL3 and BL4 round off the IPS InLine System.



INN-KERAMIK, Innsbruck (Austria)

Clinical procedure



- 1 Implant to replace tooth 36 with screwed-down abutment. Screw channel blocked out with cement.
- 2 IPS InLine crown on implant abutment, adhesively cemented with Multilink. Dr Ed Lowe / Nelson Rego, DT (USA).



Oxidized framework



On the opaquerized metal framework...



...the corresponding Deep Dentin, Dentin ...



... and Incisal materials are layered.



A true-to-nature surface structure is designed...



... and subsequently characterizations and glaze are applied using System Shade/ Stains and Glaze materials.

IPS InLine[®] PoM – Press-on-Metal C

IPS InLine PoM (Press-on-Metal) is a press ceramic for pressing to full

PRECISION Results.

IPS InLine PoM is the latest development in the area of the press-on technique. A new leucite glass-ceramic with which you may fully concentrate on the important factors of the restorations, i.e. shade selection, function and surface structure.

Discover a **Press-on-Metal** technique which allows you to fabricate accurately fitting and highly esthetic restorations in no time and with a consistent, reproducible quality.



EFFICIENT Processing.

With minimum technical effort and in a short time, the tried-and-tested press technology is used to press on the IPS InLine PoM ingots with full contours. Neither a cut-back nor ceramic layering is required.

The contouring corresponds to the final shape. The shrinkage behaviour known from traditional metal-ceramics is a thing of the past. Ceramic shoulders or individually designed emergence profiles are simply pressed; they are stable and thus a true economic alternative to conventionally layered restorations. The gingiva rests flush against the pressed, homogeneous ceramic surface.



Coordinated press programs

The press programs and press parameters for IPS InLine PoM are already stored in the software of the Ivoclar Vivadent press furnaces (Programat EP 3000, Programat EP 5000). The pressing time can be reduced by up to 45% with the Intelligent Press Function (IPF). Do not leave the pressing process to chance and trust the Programat technology. You will achieve high-precision press results and wonderfully smooth surfaces in conjunction with the IPS PressVEST Speed or IPS PressVEST investment materials.



ceramic



IPS InLine PoM
Press-on-Metal Ceramic

contour on alloy frameworks

ESTHETIC Results.

The ingot concept was deliberately kept slim and was designed in accordance with IPS InLine One. The optimum coordination of translucency and shade saturation produces esthetic restorations in one single pressing procedure.

Due to two ingot sizes (S and XS), unnecessary material waste is a thing of the past with IPS InLine PoM. The final tooth shade is achieved by individual characterization using the new Shade/Stains and Glaze materials.

But that is not all. Pressing IPS InLine PoM in different investment ring sizes also allows the fabrication of multi-unit restorations in one go.



Oxidized framework



The opaquered metal framework...



... is contoured in wax including the desired shape and function...



... and invested and pressed.



Divesting is followed by....

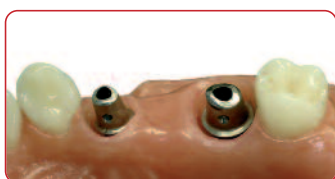


... individual finishing and characterization.



Ingot & Touch Up	BL1, BL2, BL3, BL4	A1, B1 110, 120, 130, 140	A2, B2, C1, D2 210, 220, 230, 240	A3, A3.5 -	B3, B4 310, 320, 330, 340	C2, D3, D4 410, 420, 430, 440	A4, C3, C4 510, 520, 530, 540
------------------	--------------------	------------------------------	--------------------------------------	---------------	------------------------------	----------------------------------	----------------------------------

Clinical procedure



Implants in place



Fully anatomical, accurately fitting pressed-on restoration



The IPS InLine PoM restoration on Callisto Implant 78 harmoniously blends in with the natural environment.

INN-KERAMIK Innsbruck (Austria)

IPS InLine® Metal-Ceramic System

The decision is yours

The balanced basic assortment allows you to achieve lifelike and esthetic results for the entire range of metal restorations. IPS InLine is available in A-D, Chromascop and Bleach shades. Seven IPS InLine Dentcisal materials and 7 IPS InLine PoM ingots are enough to reproduce all the Chromascop, A-D and 4 modern Bleach shades. The assortments are equipped with the most popular shades and can be individually supplemented with Refills.

Delivery forms:

IPS InLine Kits

IPS InLine Trial Kit Chromascop	593001
IPS InLine Trial Kit A3	593154
IPS InLine Trial Kit A1	594079
IPS InLine Basic Kit Chromascop	593003
IPS InLine Basic Kit A-D	591551
IPS InLine Deep Dentin Kit Chromascop	593005
IPS InLine Deep Dentin Kit A-D	593158
IPS InLine Margin Kit Chromascop	593004
IPS InLine Margin Kit A-D	593157
IPS InLine Bleach Kit BL	602167
IPS InLine Impulse Kit	601222
IPS InLine Gingiva Kit	593286

IPS InLine One Kits

IPS InLine One Starter Kit Chromascop 120	631864
IPS InLine One Starter Kit A-D A2	631866
IPS InLine One Starter Kit A-D A3	631867
IPS InLine One Basic Kit Chromascop	631848
IPS InLine One Basic Kit A-D	631849

IPS InLine PoM Kits

IPS InLine PoM Trial Kit A-D	602169
IPS InLine PoM Basic Kit Chromascop	602170
IPS InLine PoM Basic Kit A-D	602169

IPS InLine System Kit

IPS InLine System Shade/Stains Kit	602166
------------------------------------	--------

And:

Cementation

Your dentist can apply either a conventional, adhesive or self-adhesive cementation protocol for placing IPS InLine restorations.

SpeedCEM is recommended for self-adhesive cementation. For an adhesive cementation protocol, we recommend the **Multilink Automix** universal composite.



These products form part of our Implant Esthetics competence area. All the products of this area are optimally coordinated with each other.