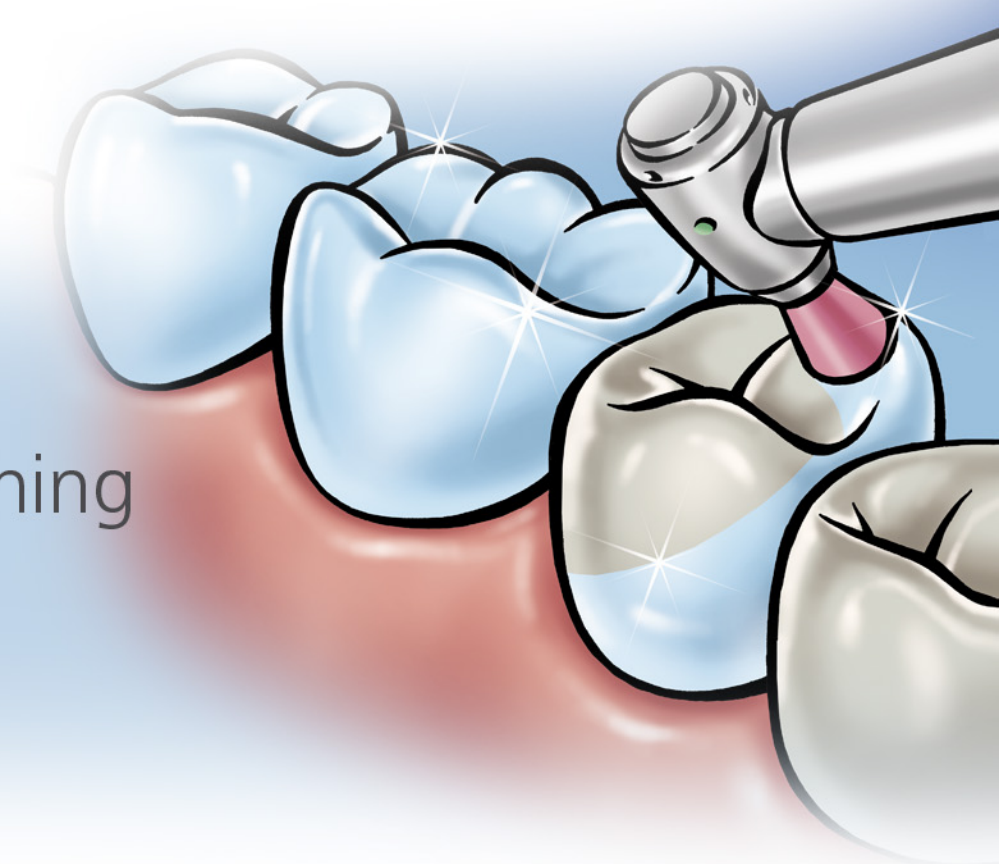


Proxyt®

Prophy pastes
for professional
tooth cleaning and polishing



Proxyt



Overview

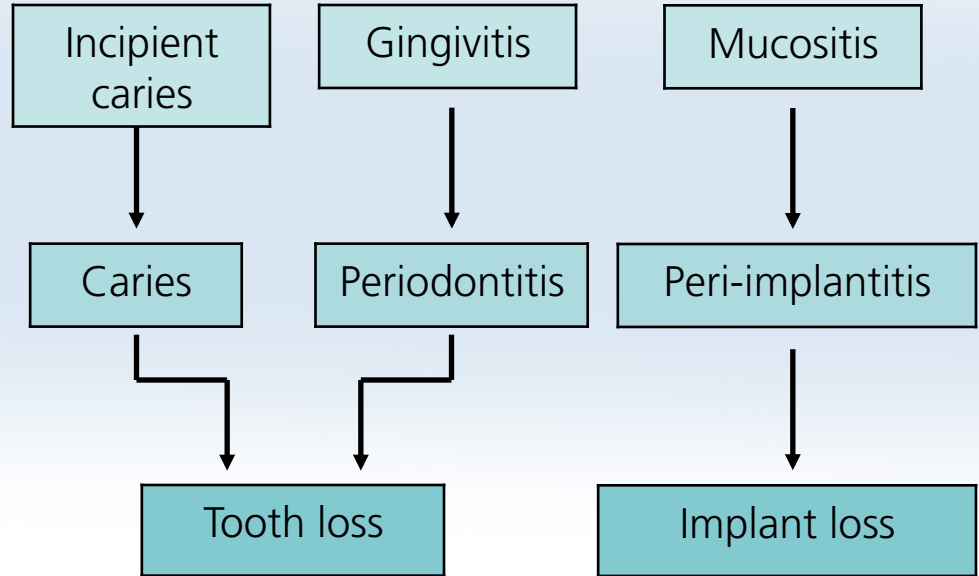
- Professional tooth cleaning
- Cleaning and polishing properties of prophylactic pastes
- RDA value Proxyt
- Study results
- Proxyt at a glance

Professional tooth cleaning – A necessity



(Dr S. Heintze, Ivoclar Vivadent AG)

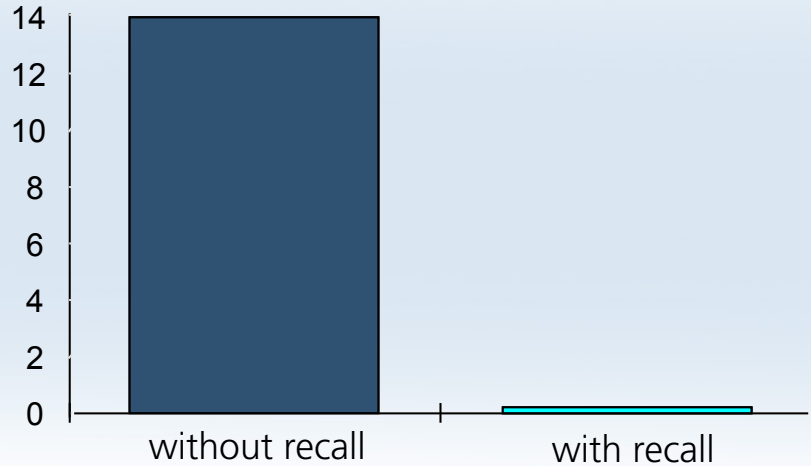
Unsatisfactory oral hygiene



Effects of controlled oral hygiene



Tooth surfaces with new caries lesions;
average value



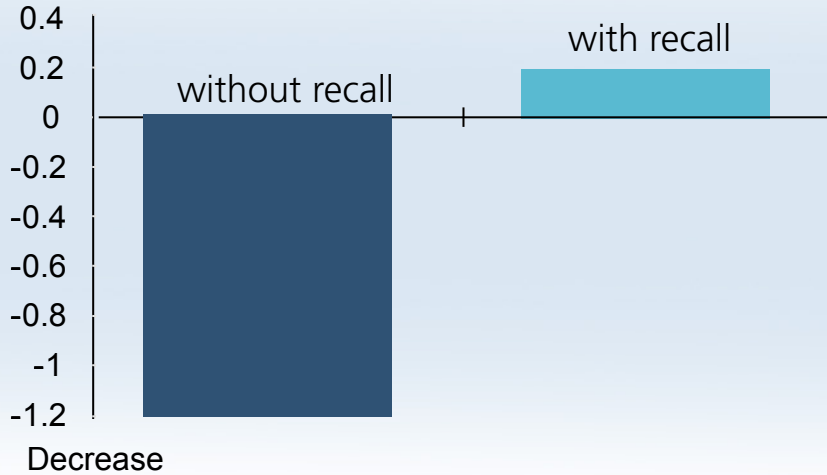
Development of caries lesions in adults who attended prophylaxis recalls within a six-year period compared with those in adults whose teeth were not treated.

(Axelsson & Lindhe 1981)

Effects of controlled oral hygiene



Attachment; average value
Increase



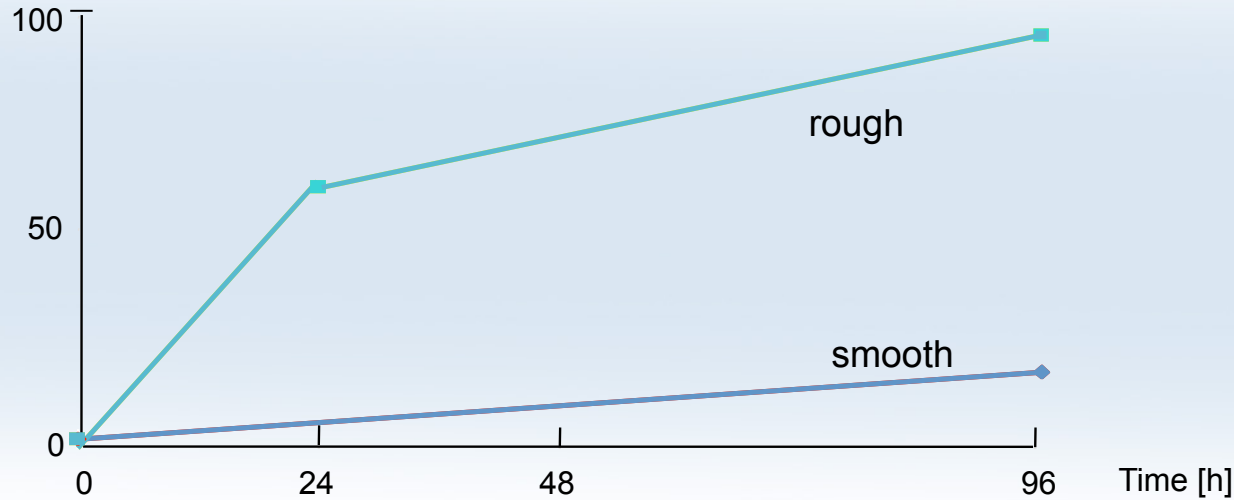
Loss of attachment in adult dentitions within a period of six years with and without prophylaxis recalls

(Axelsson & Lindhe 1981)

Professional tooth cleaning – The benefits



Tooth surfaces covered with plaque [%]



Smooth tooth surfaces show only moderate plaque deposits.

(Quirynen et al. 1988)

Professional tooth cleaning – The benefits



(Dr S. Heintze, Ivoclar Vivadent AG)

Indication

- Removal of plaque and tartar
- Removal of stains
- Polishing of rough surfaces

Professional tooth cleaning



(Dr A. Peschke, Ivoclar Vivadent AG)

Requirements

- Thorough removal of plaque, tartar and stains
- Minimal abrasion of tooth, restoration and implant surfaces
- Smooth surfaces
- No injury or irritation of gingival or peri-implant tissue

Professional tooth cleaning



Instruments

- Machine-driven instruments
 - Air-abrasive instruments, ultrasound scalers, air scalers
- Hand-held instruments
 - Scalers, curettes
- Prophylaxis pastes used with a rubber cup or brush and a contra-angle handpiece

Prophy pastes – Cleaning and polishing results



Influences		
Abrasives	External factors	Internal factors
<ul style="list-style-type: none">• Concentration• Composition• Particle size• Structure	<ul style="list-style-type: none">• Treatment time• Applied pressure• Brush or cup• Rotational speed	<ul style="list-style-type: none">• pH of the paste• Type and concentration of the binding agent

(Barbakow et al. 1987; Christensen & Bangerter 1984; Jaeger et al. 2005)

Proxyt – Individualized action



The RDA value (Relative Dentin Abrasion) provides information about the level of abrasion of the paste on sensitive dentin.

The RDA of Proxyt was established in the laboratory using a radiotracer procedure on extracted human dentin. In the process, professional tooth cleaning was simulated.

The abrasion level of an experimental product is calculated according to its relationship with a reference substance showing an RDA of 100.

(Stokey & Schemehorn 1979)

Relative abrasion of prophy pastes



The RDA values of Proxyt have been established at the University of Indianapolis using radioactively marked human dentin.

Abrasive reference material: pumice





(Stookey & Schemehorn 1979)

Proxylt – Customized effect



Paste

Abrasion Indication

with fluoride	 fine	low	(RDA 7)	Removal of light stains and polishing
	 medium	average	(RDA 36)	Removal of plaque
	 coarse	high	(RDA 83)	Removal of plaque and elimination of stains
fluoride-free	 medium	average	(RDA 36)	Removal of plaque

RDA – Relative Dentin Abrasion

[More information](#)

Comparison of prophy pastes



(Dr A. Stiefenhofer, Ivoclar Vivadent AG, 2006)

Proxyl causes significantly less loss of tooth structure or restorative material compared with Cleanic.

Polished surfaces:

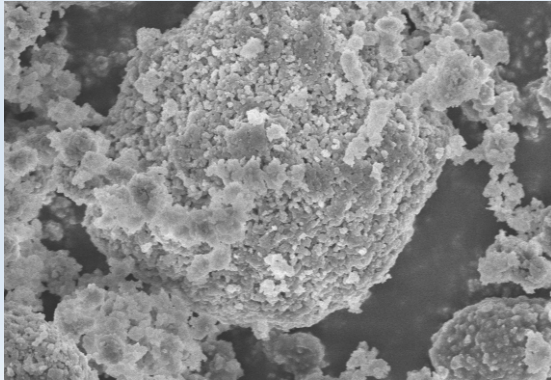
Enamel, root cement, amalgam, compomer, composite resin, glass ionomer cement

(Bose et al. 1996; Rühling et al. 2004)

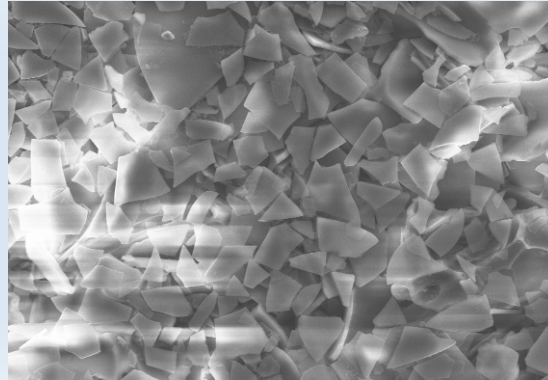
Comparison of prophy pastes



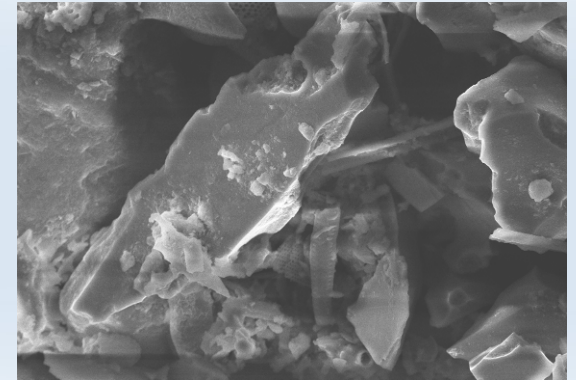
Appearance of abrasive particles



Proxyt® fine



Cleanic®*



Nupro® fine*

(Ivoclar Vivadent, R&D 2010)

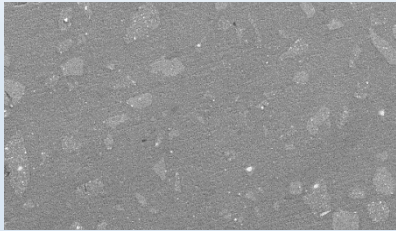
* Not a registered trademark of Ivoclar Vivadent AG

[More information](#)

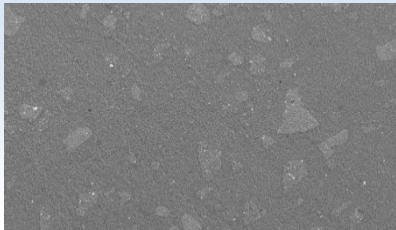
Comparison of prophy pastes



The effect of prophy pastes on the surface of a nano-hybrid composite

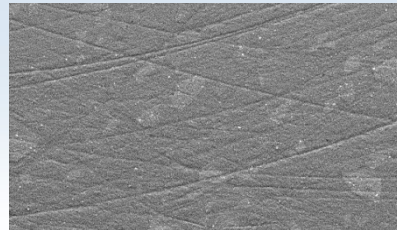


Baseline

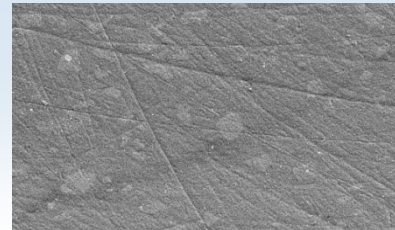


Proxyt® fine

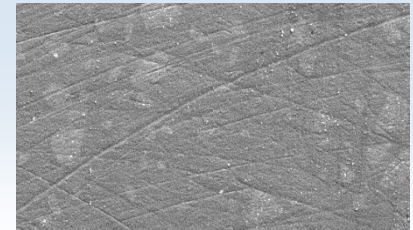
SEM, mag = 200 X



Nupro® fine*



Cleanic®*

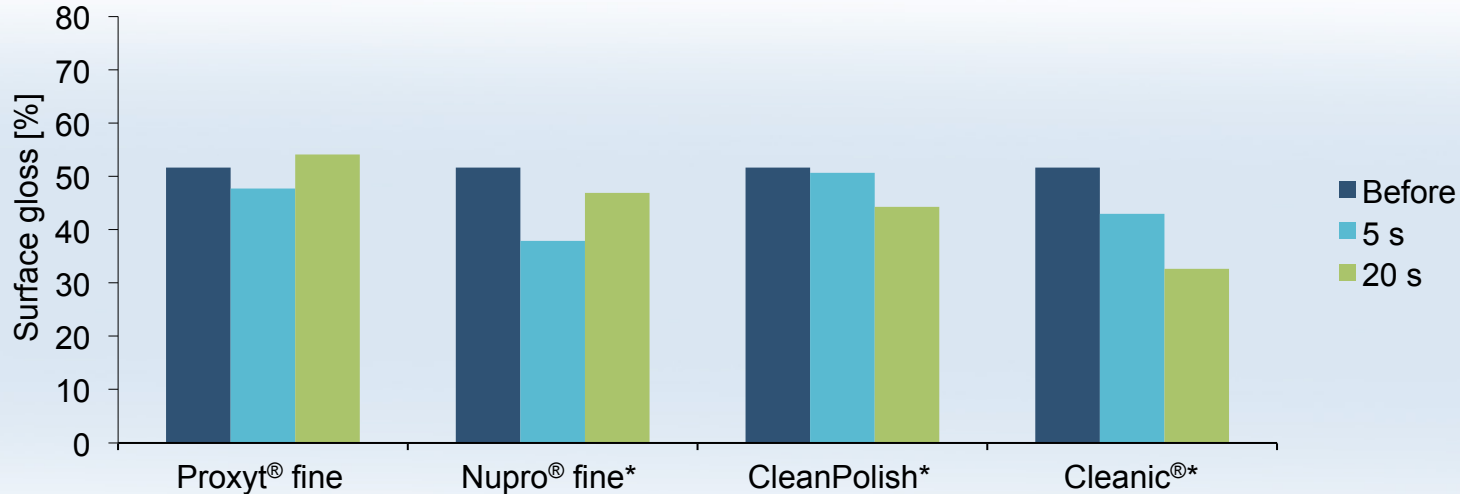


CleanPolish®*

(Ivoclar Vivadent, R&D 2013)

* Not a registered trademark of Ivoclar Vivadent AG

Comparison of prophy pastes

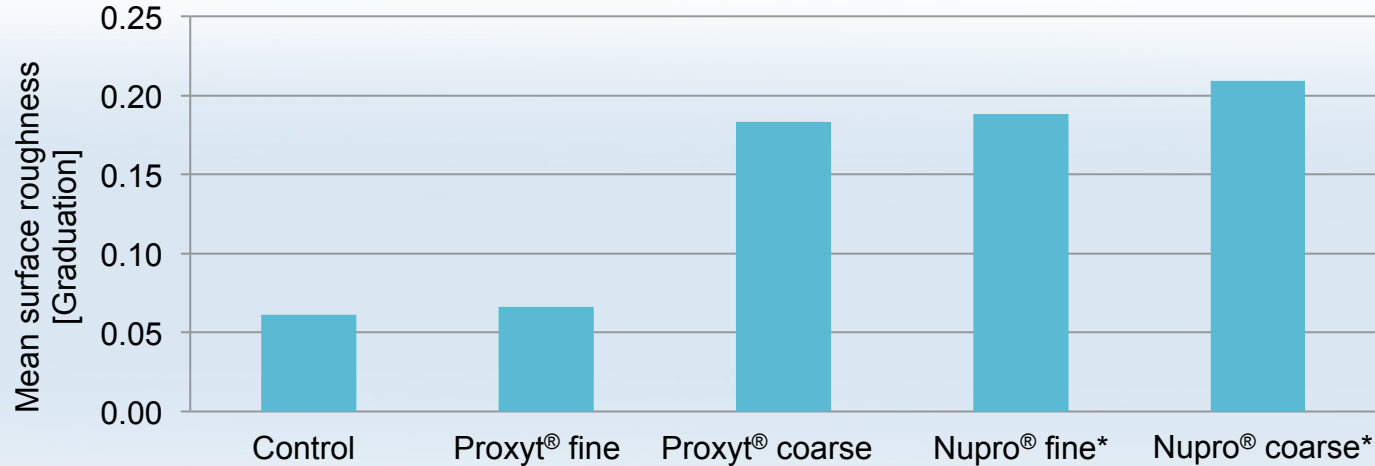


The effect of various fine prophy pastes on the surface of Tetric EvoCeram (composite) after 5-s and 20-s polishing

(Lendenmann et al. 2011)

* Not a registered trademark of Ivoclar Vivadent AG

Comparison of prophy pastes



Effect of prophylactic pastes on ceramic surface roughness of IPS Empress CAD

(Yazici et al. 2012)

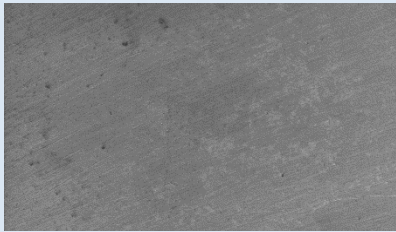
* Not a registered trademark of Ivoclar Vivadent AG



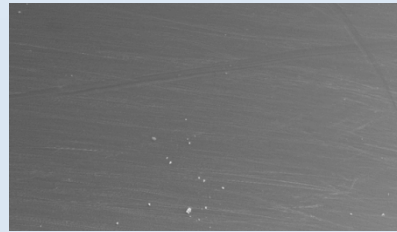
Comparison of prophy pastes



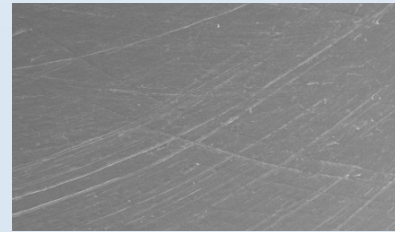
Quality of titanium abutment surfaces after polishing with prophy pastes



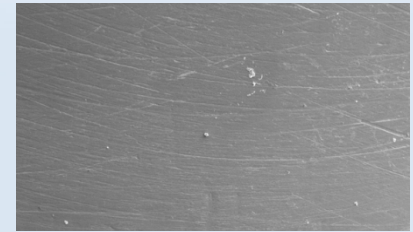
Baseline



Proxyt® fine



Nupro® fine*



Cleanic®*

SEM, mag = 200 X

(Ivoclar Vivadent, R&D 2014)

* Not a registered trademark of Ivoclar Vivadent AG

Problems of rough surfaces

- Rapid accumulation of bacterial plaque
(Quirynen et al. 1988)
 - Risk of incipient caries
 - Risk of gingivitis and mucositis
 - More staining
- Loss of lustre
(Ivoclar Vivadent, R&D 2010)



Proxylt – Clinical results



(Dr A. Peschke, Ivoclar Vivadent AG)

Proxylt is a prophylactic paste that has been proven to polish restorations without damaging them. At the same time, the paste cleans and polishes teeth effectively – even if they are heavily stained.

(Evaluation Reality, 2002)

Proxyl – At a glance



Features	Benefits
3 defined levels of abrasion	<ul style="list-style-type: none">- Needs-oriented, gentle cleaning and polishing- Prevention of hypersensitivity
Xylitol	Disturbance of the bacterial metabolism
<ul style="list-style-type: none">- Choice of 3 abrasive values with fluoride- Medium abrasive value additionally available without fluoride or flavour additives	Customized solutions for individual requirements
Fine Proxyl without pumice	<ul style="list-style-type: none">- Scratch-free polishing of quality surfaces- Natural-looking shine- Gentle treatment of sensitive peri-implant tissue

Proxyl – Patients like the feeling



- Feeling of well-being during and after the treatment
- Perceptibly smooth teeth
- Outstanding “pink-and-white” esthetics
- Fresh peppermint taste
- Beautiful teeth for a long time
- Safeguarding of the investment in implants and restorations

Dental team – The benefits



- Well-being of patients
- Oral health maintenance
- Long-term, gentle care of restorations and implants
- Growing demand
- Development of long-lasting patient relationships

Proxyl – In the dental practice



Application

- Maintaining of the good health of teeth and dental supporting tissue
- During orthodontic treatment
- Regular after-care for implant patients
- Care of esthetic restorations
- In the context of tooth whitening

Proxyt®

Prophy pastes
for professional
tooth cleaning and polishing

