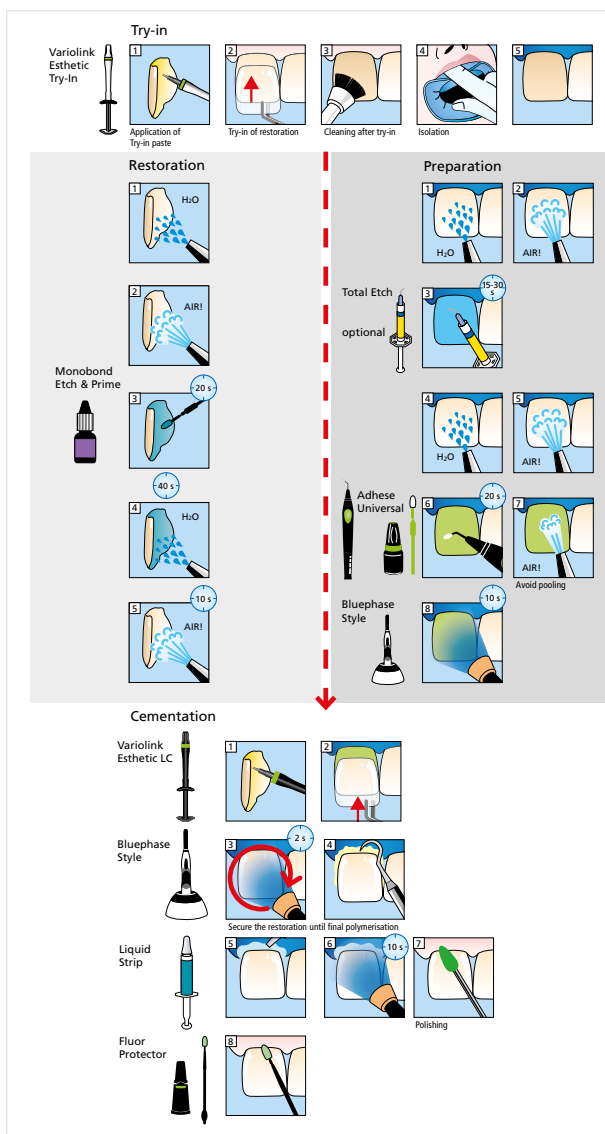


# Placement of IPS Empress® CAD restorations with

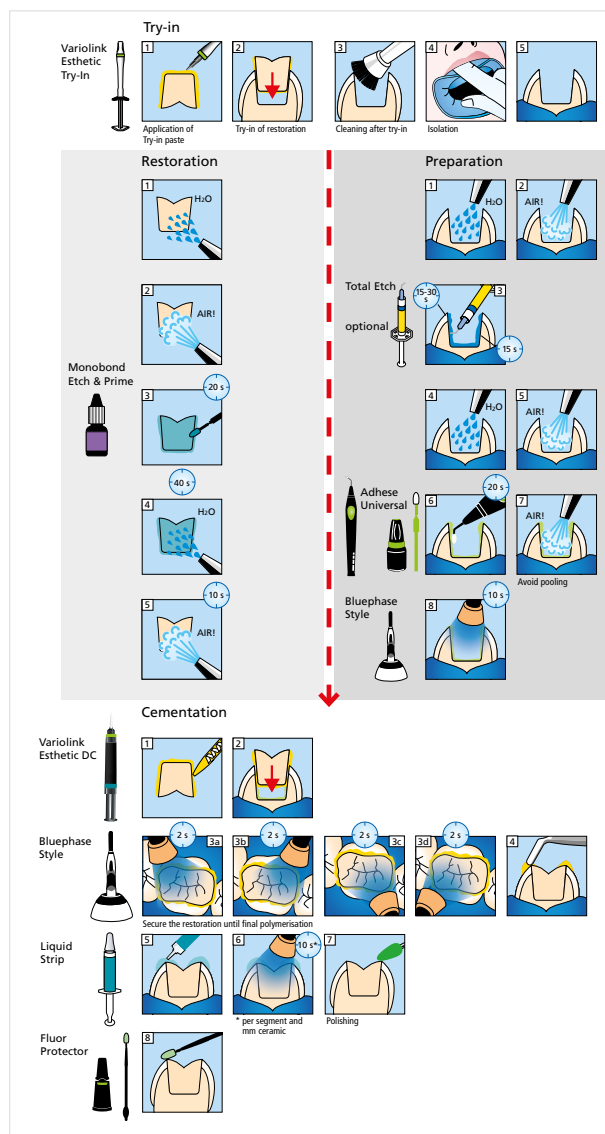
## Variolink® Esthetic LC

Placement of veneers



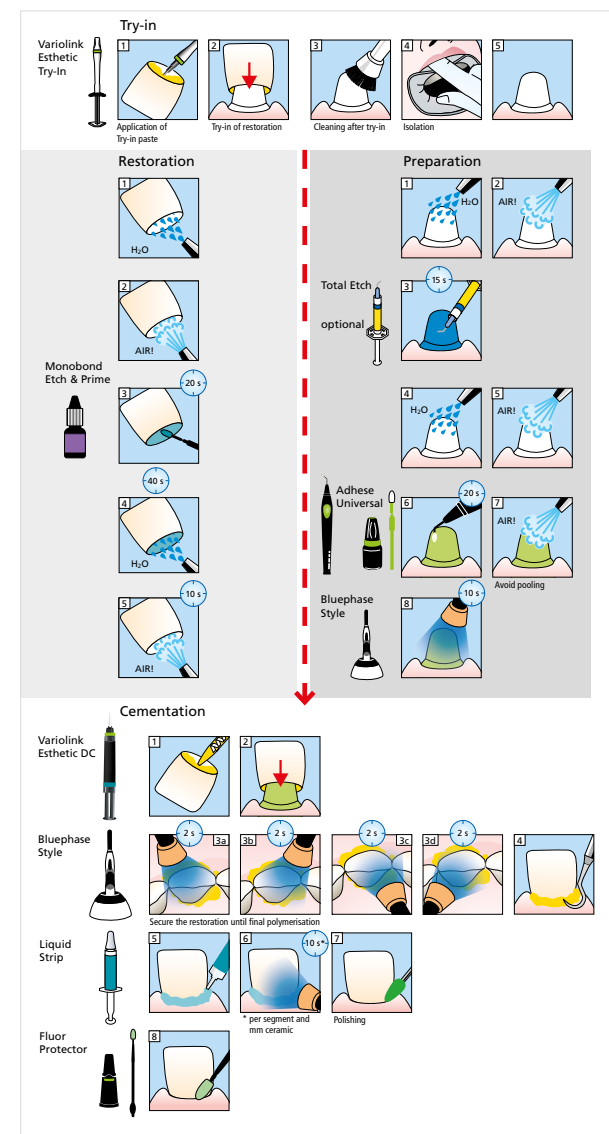
## Variolink® Esthetic DC

Placement of inlays/onlays



## Variolink® Esthetic DC

Placement of crowns

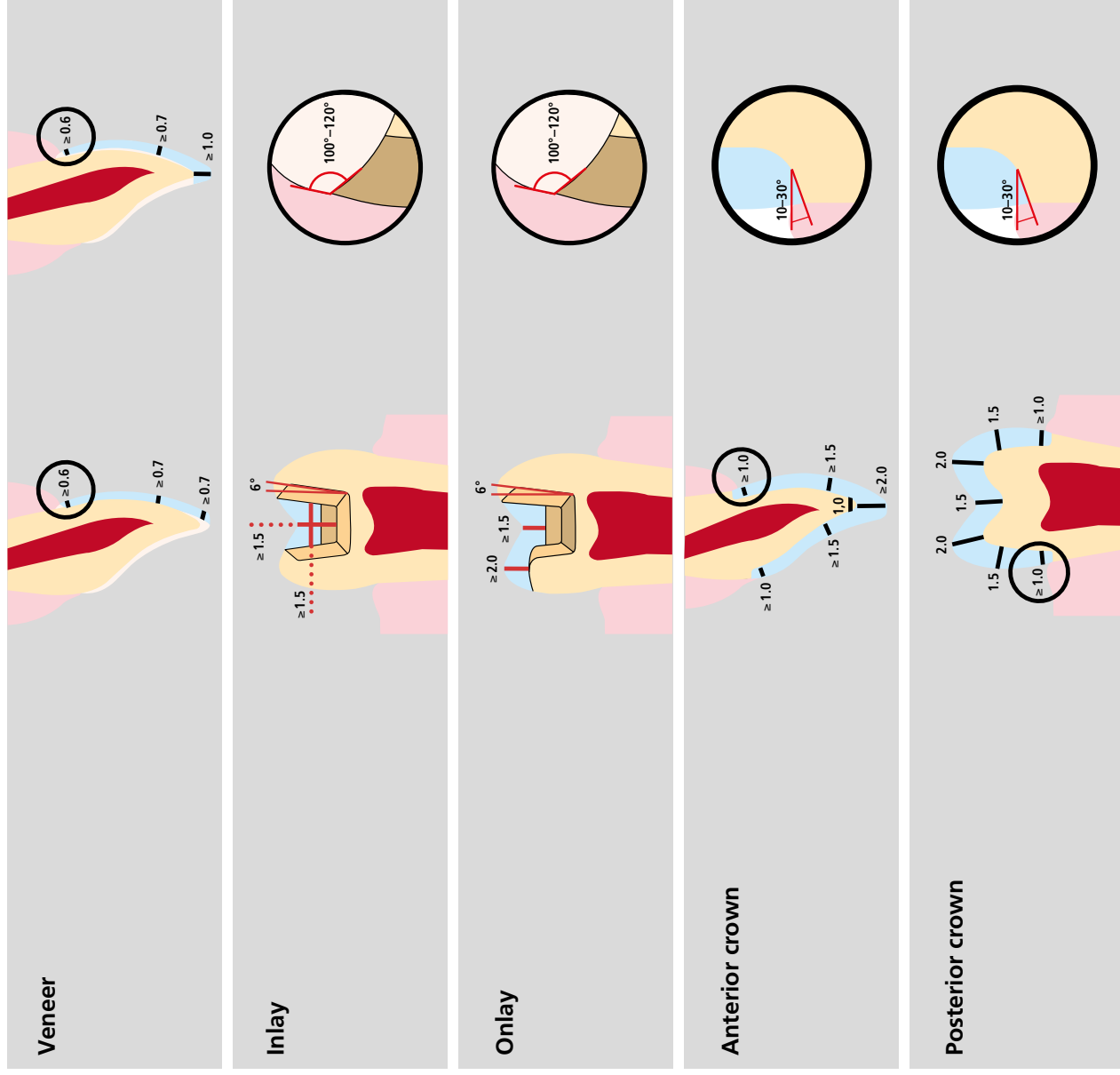


more information  
[www.cementation-navigation.com](http://www.cementation-navigation.com)

# IPS Empress® CAD – Preparation Guidelines

Careful preparation is decisive for the durability and accuracy of fit of the restoration.

It is important to properly design the margin with a circular shoulder or chamfer preparation and rounded inner aspects. Transitions with sharp angles and feather edge margins should be avoided. In order to achieve a stable restoration, the minimum wall thicknesses have to be observed.



## Adhesive cementation

IPS Empress® CAD restorations must be inserted using the adhesive cementation technique. We recommend Variolink® Esthetic in combination with the dentin bonding agent Adhese® Universal or Multilink® Automix with Multilink® Primer AVB. Monobond Etch&Prime® and Monobond Plus® are available for the conditioning.



**CE 0123**

Rx ONLY  
For dental use only!



Manufacturer:  
Ivoclar Vivadent AG, 9494 Schaan/Liechtenstein  
[www.ivoclarvivadent.com](http://www.ivoclarvivadent.com)



see instructions

Date information prepared: 2017-03-22, Rev. 1  
60317/EN