

# IPS e.max<sup>®</sup> Ceram Selection



all ceramic  
all you need



ivoclar  
vivadent<sup>®</sup>  
passion vision innovation

# IPS e.max® Ceram Selection

**IPS e.max® Ceram Selection offers new Enamel and Effect materials that will inspire professionals with their brilliant shades and impressive light optical properties.**

IPS e.max Ceram Selection comprises twelve materials that are especially designed to give professionals more room for creativity and individuality in the layering technique. The materials are used in combination with the existing IPS e.max Ceram materials and facilitate the creation of individualized characteristics - with the aim to achieve highly esthetic, natural looking restorations.

The renowned dental technicians Oliver Brix (Germany), August Bruguera (Spain) and Gérald Ubassy (France) have substantially shaped the concept on which IPS e.max Ceram Selection is based. The specially shaded materials and their application are the result of many years of successful work with IPS e.max Ceram.

The twelve shades are divided into three groups:

- Special Enamel – shaded Enamel materials
- Light Reflector – light reflecting Effect materials
- Light Absorber – light absorbing Effect materials

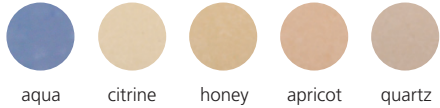


Made to  
create nature

Created from passion  
and experience ...



A handwritten signature in black ink, appearing to read "Oliver Brix".



... with the aim to copy nature  
as closely as possible ...



A handwritten signature in black ink, appearing to read "August Bruguera".



... and the aspiration  
to share this knowledge.



A handwritten signature in black ink, appearing to read "Gérald Ubassy".



# Special Enamel

The six **Special Enamel** materials are differently shaded Enamel materials that feature an enamel-like translucency.



aqua

citrine

honey

apricot

quartz

diamond

# Light Reflector

The three **Light Reflector** materials are light reflecting Effect materials.



cream



salmon



silk

# Light Absorber

The three **Light Absorber** materials are light absorbing Effect materials.



fog



lavender



taupe

# Material Selection Guide

## *Shade and translucency*

(Shade tab with a layer thickness of 1 mm)

*Group*

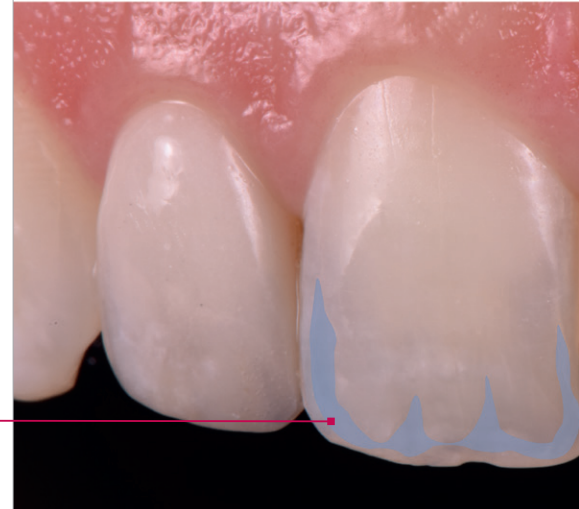
Special Enamel

**aqua**

Intensive Enamel material to enhance along the incisal margins



## *Positioning example*



## Product description

...the translucent bluish effect



## Area of application



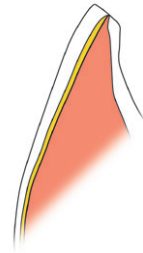
▶ Incisal area



▶ Intermediate area



▶ Incisal area  
▶ Intermediate area



▶ Intermediate area  
▶ Dentin area

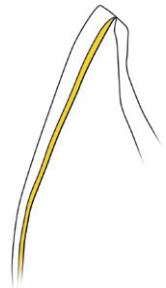


## Natural effect

Special Enamel

# aqua

Intensive Enamel material to enhance the translucent bluish effect along the incisal margins

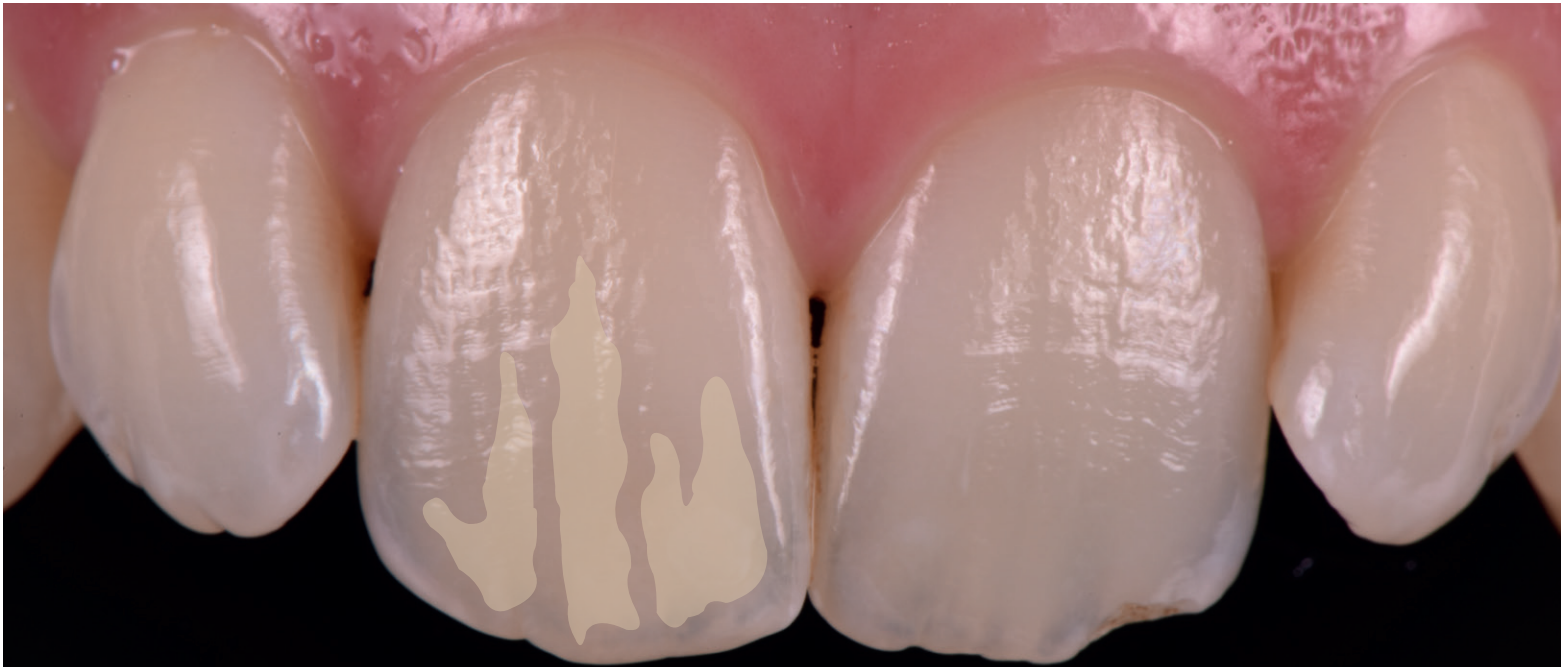




Special Enamel

# citrine

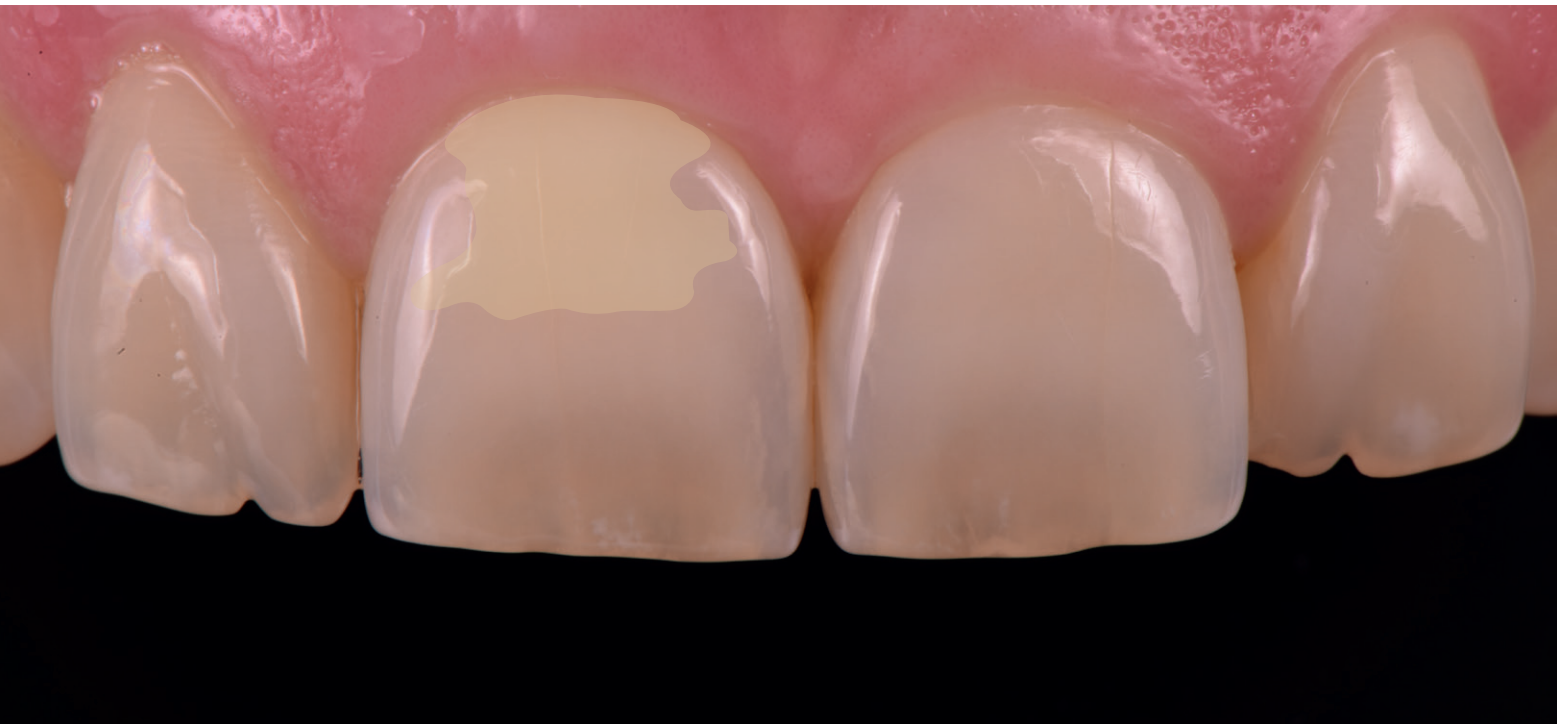
Yellowish Enamel material for adjusting the colour saturation and chroma and for giving accentuation to the incisal area



Special Enamel

# honey

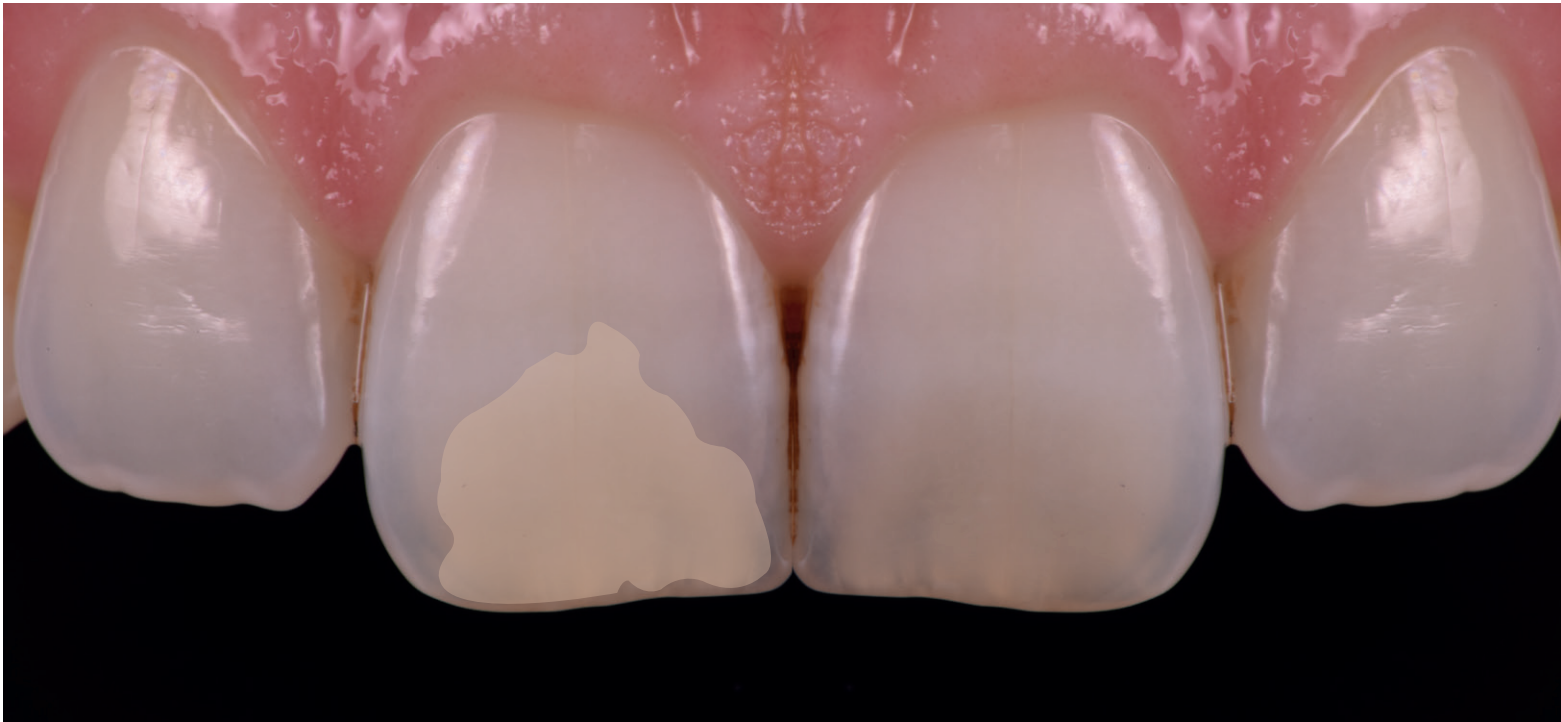
Honey-coloured Enamel material for adjusting the colour saturation and chroma and for giving accentuation to the incisal area



Special Enamel

# apricot

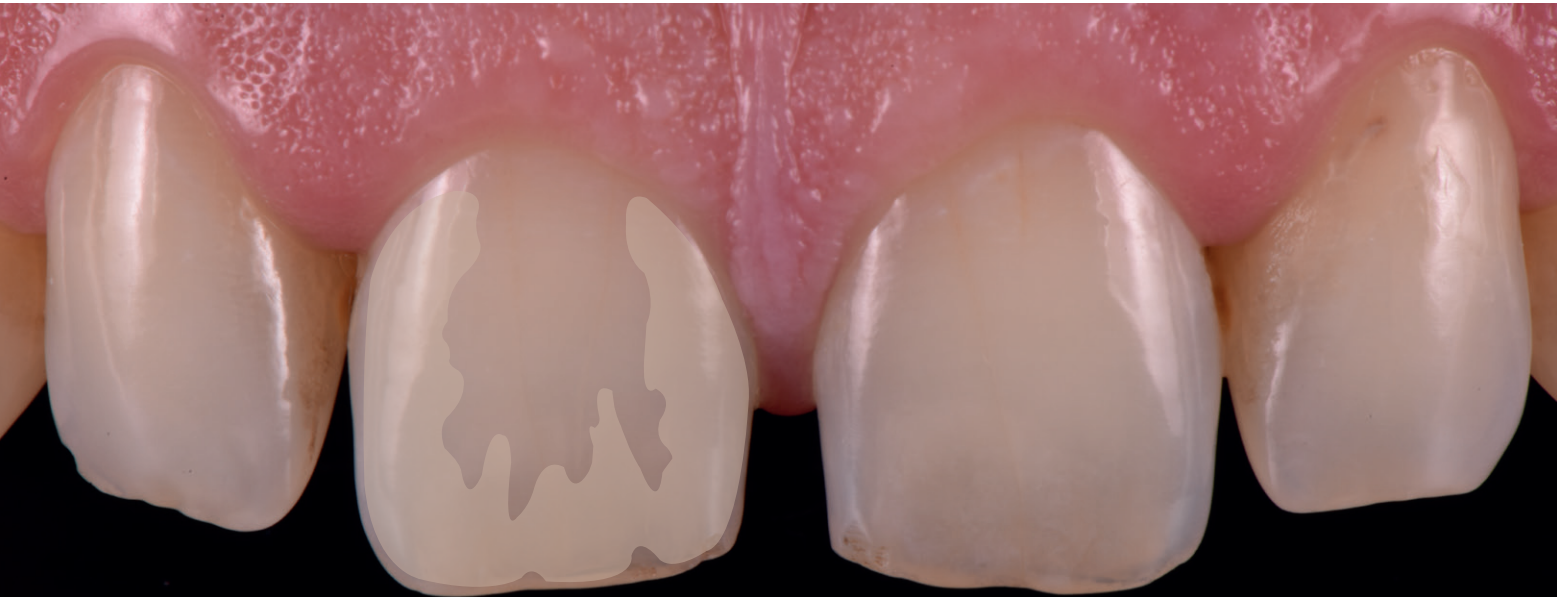
Apricot-coloured Enamel material for adjusting the colour saturation and chroma and for giving accentuation to the incisal area



Special Enamel

# quartz

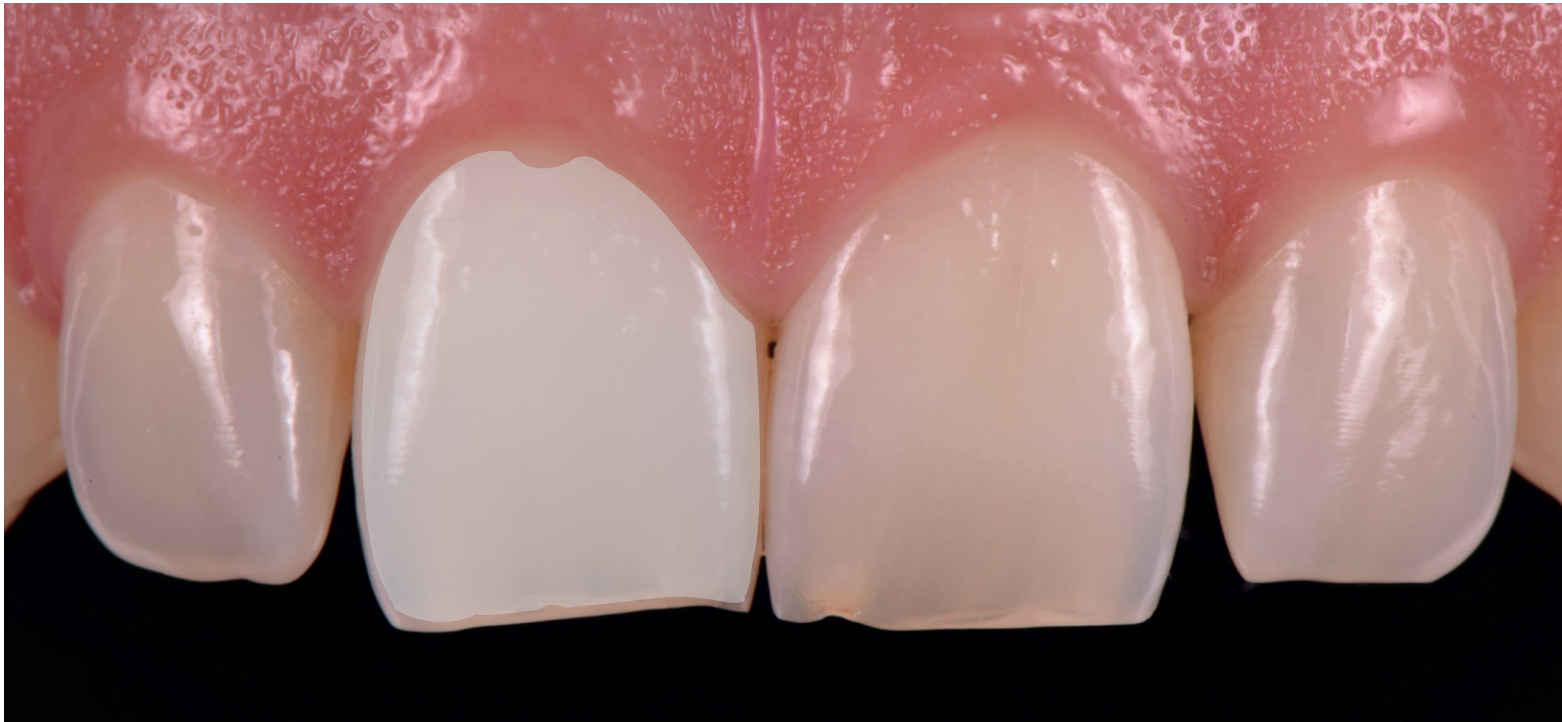
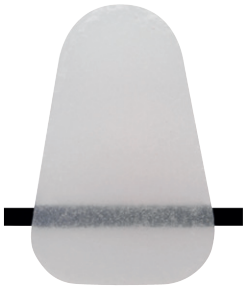
Warm grey Enamel material for adjusting the colour saturation and chroma and for giving accentuation to the incisal area



Special Enamel

# diamond

Shade-neutral universal Incisal material for the anterior region

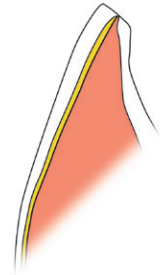




Light Reflector

# cream

Cream-coloured Effect material for reproducing colour reflecting areas in the cervical and incisal third

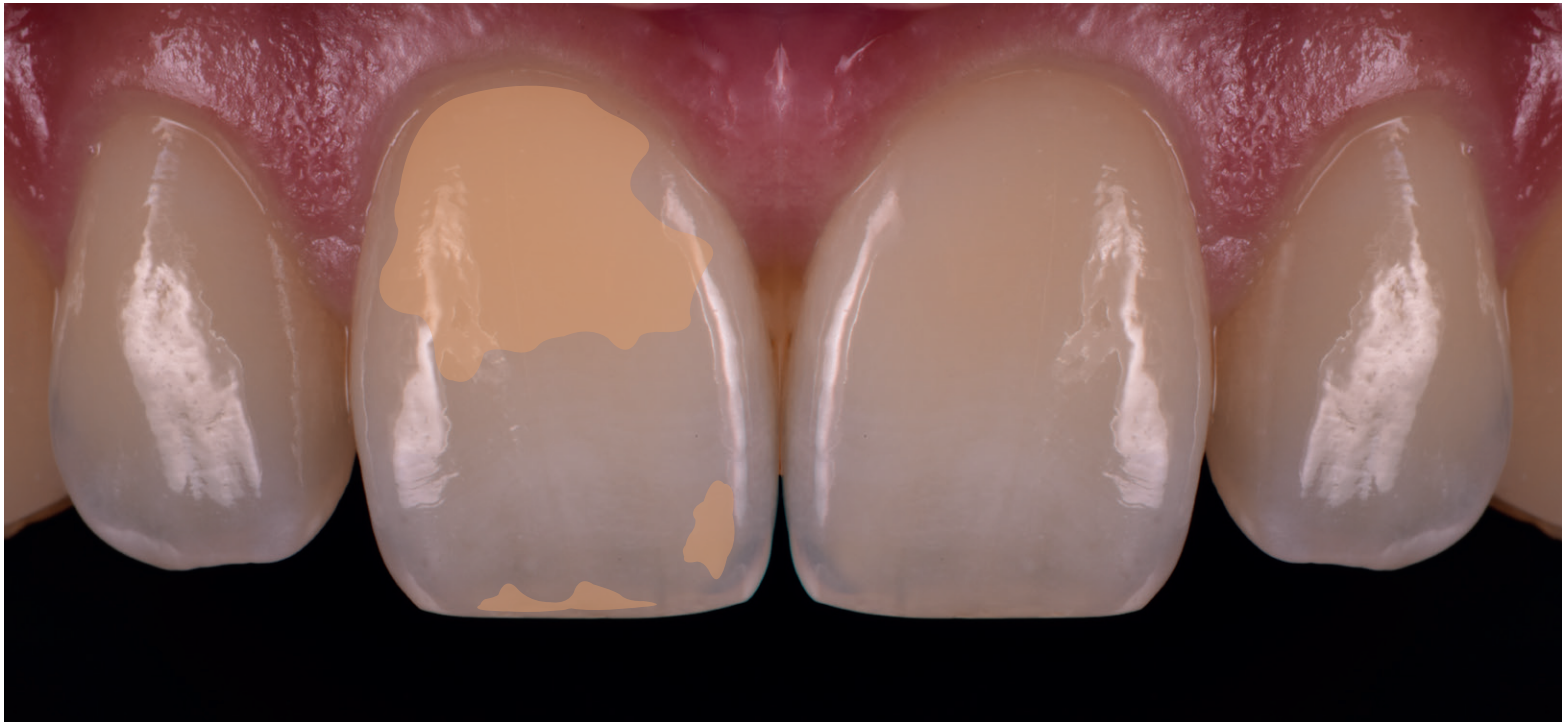
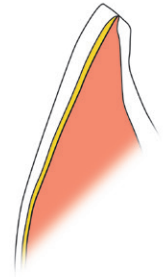




Light Reflector

# salmon

Salmon-coloured Effect material for reproducing colour reflecting areas in the cervical and incisal third



Light Reflector

# **silk**

Whitish Effect material for increasing the brightness value in the incisal area



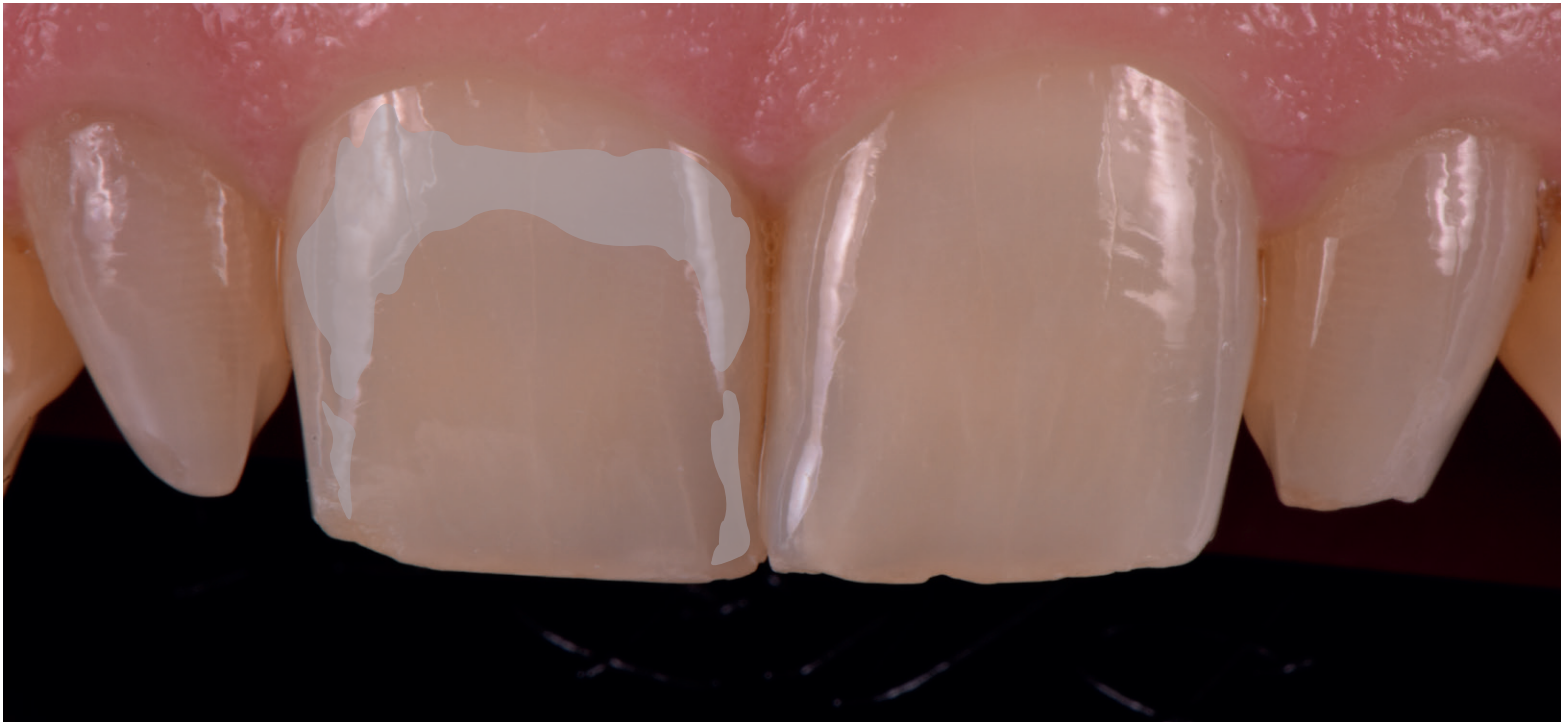




Light Absorber

# fog

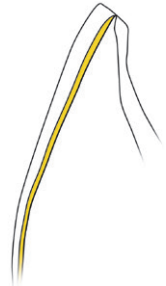
Greyish Effect material for reducing the brightness value in the incisal area



Light Absorber

# lavender

Lilac-coloured Effect material for creating absorption areas in the incisal and cervical third and in the proximal areas

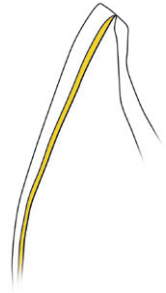




Light Absorber

# taupe

Lilac-brown Effect material for creating absorption areas in the incisal and cervical third and along the proximal areas



# Delivery forms

## IPS e.max® Ceram Selection Kit

- IPS e.max Ceram Special Enamel, 1x 5 g of each shade: aqua, citrine, honey, apricot, quartz, diamond
- IPS e.max Ceram Light Reflector, 1x 5 g of each shade: cream, salmon, silk
- IPS e.max Ceram Light Absorber, 1x 5 g of each shade: fog, lavender, taupe



## Refills



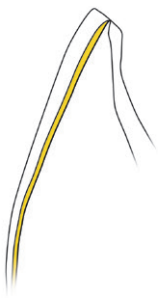
**IPS e.max Ceram  
Special Enamel, 1x 5 g**  
Shades: aqua, citrine, honey,  
apricot, quartz, diamond



**IPS e.max Ceram  
Light Reflector, 1x 5 g**  
Shades: cream, salmon, silk



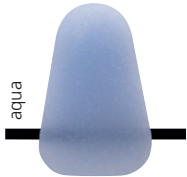
**IPS e.max Ceram  
Light Absorber, 1x 5 g**  
Shades: fog, lavender, taupe



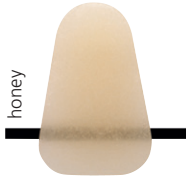


# IPS e.max® Ceram Selection

## Special Enamel



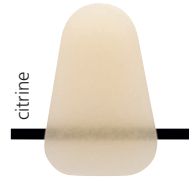
aqua



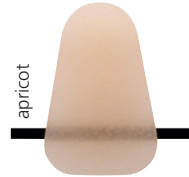
honey



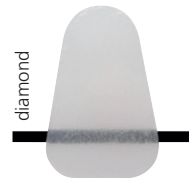
quartz



citrine

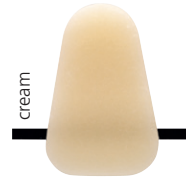


apricot

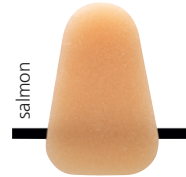


diamond

## Light Reflector



cream

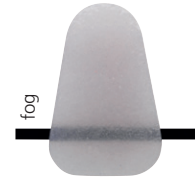


salmon

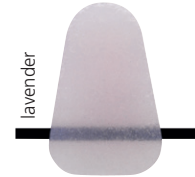


silk

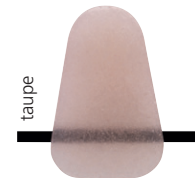
## Light Absorber



fog



lavender



taupe