

# MultiCore® Flow

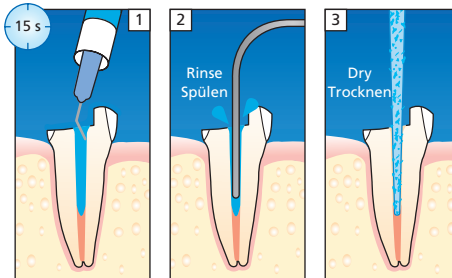
Luting of Fiber Posts and Core build-up

Befestigung von glasfaserverstärkten Stiften und Stumpfaufbau

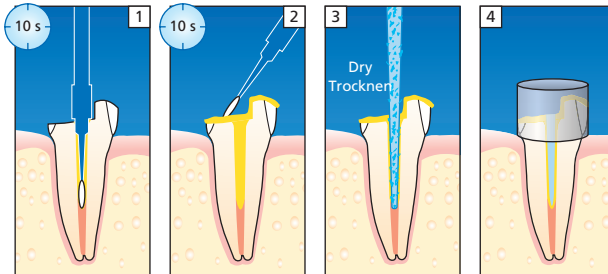
1

Luting | Befestigung

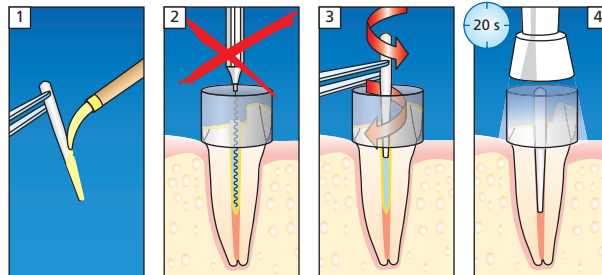
Total Etch



Excite F DSC



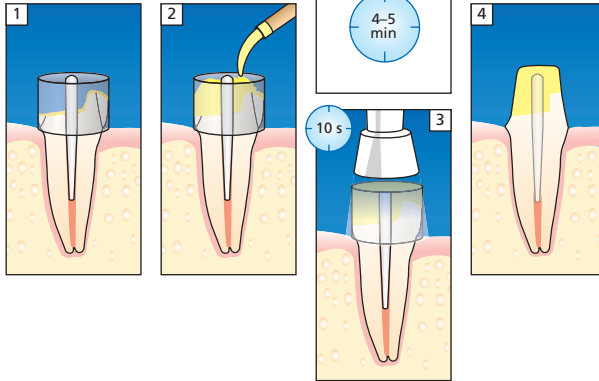
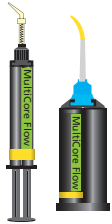
MultiCore Flow



2

## Core build-up | Stumpfaufbau

MultiCore Flow



CE 0123



Please read Instructions for Use  
Bitte lesen Sie die Gebrauchsinformation

ivoclar  
vivadent:  
clinical