

Ortho Care Program

Oral Health Management
during and after orthodontic treatment



Synchronized
solutions
for a bright smile

Ivoclar Vivadent

Ortho Care Program

Strong and healthy teeth and healthy gums. This is the goal to which orthodontists and their teams aspire and it is the wish of orthodontic patients.

Oral Health Management in orthodontic patients

Orthodontic patients are faced with many challenges: Brackets and bands promote the growth of the bacterial biofilm. What is more, the complex structures are difficult to clean. As a result, white spot lesions may develop and the gums can become inflamed. Therefore, selective Oral Health Management solutions for in-office and at-home use are required for all the different orthodontic treatment phases. The ultimate goal is not only to have properly aligned teeth, but also good looking and healthy teeth.

Ortho Care Program

The Ortho Care Program from Ivoclar Vivadent offers coordinated product systems for the placement of brackets and for professional oral health care during and after the orthodontic treatment. The products are suitable for use in orthodontic patients due to their special ingredients, as well as their favourable properties related to flow, wetting and adhesion. Furthermore, the products are easy to apply and have mild flavours. Clinical experience and the results of international studies confirm the effectiveness of these products in this target group.



Ortho Care

- *Healthy mouth*
- *Healthy teeth*
- *Healthy gums*

Ivoclar Vivadent offers synchronized solutions for a bright smile.

Contents:	4	OptraGate® For a full view
	5	Plaque Test Focus on biofilm
	8	Proxyt® Removal of bacterial biofilm
	10	Fluor Protector Superior protection against caries and erosion
	12	Cervitec® Individualized protection for at-risk areas
	14	Heliosit® Orthodontic and Bluephase® Style Fast placement of brackets
	15	VivaStyle® Paint On Plus Serious whitening



OptraGate®

For a full view



A full view of the working area saves treatment time and heightens the safety of orthodontic procedures. The latex-free lip and cheek retractor OptraGate® retracts the lips and cheeks around the entire circumference of the mouth.

Invaluable auxiliary

OptraGate® provides unhindered access to the oral cavity and enables dental professionals to work efficiently, knowing that their patients are comfortable during the following procedures:

- ▶ dental examination
- ▶ bonding and removal of brackets and bands
- ▶ application of Plaque Test
- ▶ professional cleaning and polishing of the teeth
- ▶ application of protective varnishes
- ▶ tooth whitening

This saves everyone involved precious time.

Special tip

- ▶ OptraGate facilitates the positioning of brackets.

Benefits for the dental team

- ▶ Improved access to the treatment field
- ▶ Efficient treatment
- ▶ Wide range of applications

Benefits for orthodontic patients

- ▶ Latex-free
- ▶ Comfortable retraction of the lips and cheeks
- ▶ Fast treatment

The scientific basis

- ▶ OptraGate is helpful in many different situations: orthodontics, restorative treatment, photography, laser procedures, professional tooth cleaning, dental imaging and impression taking (Brinker 2014).



The oral cavity and the teeth are easy to reach. As a result, the bonding and removal of brackets and bands proceeds more efficiently.

OptraGate – the comfortable lip and cheek retractor

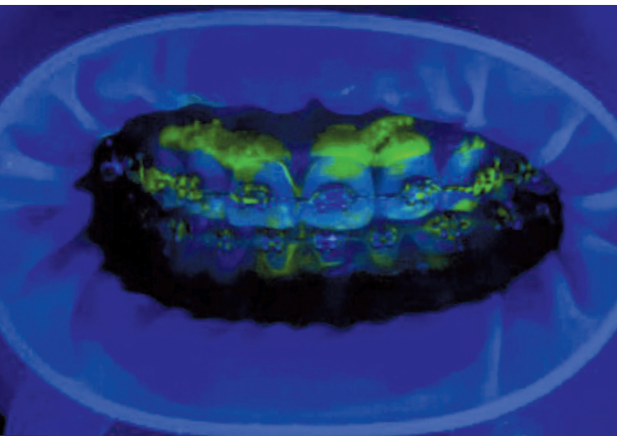
Advantages	Benefits
Three-dimensional flexibility	Relaxed opening of the mouth
Recesses for the lip frenulum	High level of comfort for patients
Available in different sizes	Individualized fit

Plaque Test

Focus on biofilm



Bacterial biofilm promotes the development of white spot lesions and gingivitis. Therefore, the desired outcome of the orthodontic treatment is compromised.



Problem areas: Brackets and bands

Plaque tends to accumulate in the areas around brackets and bands, which are difficult to clean. At the same time, excellent oral hygiene is indispensable to the success of the orthodontic treatment. As a result, patients need good advice.

Plaque Test – revealing the biofilm

Plaque Test is used to selectively colour bacterial biofilm and make it visible. The fluorescent pigment does not react with the teeth, gums and orthodontic appliances. Only the plaque-coated areas glow under the light of a curing unit, for example, Bluephase® Style from Ivoclar Vivadent.

Picture: Dr T. Repetto-Bauckhage, Ivoclar Vivadent AG, Liechtenstein

Special tip

- ▶ Bacterial biofilms can be selectively and gently removed with Proxyl® pastes, which are specially formulated for professional tooth cleaning and polishing. The OptraGate® lip and cheek retractor facilitates access to tooth surfaces.

Benefits for the dental team

- ▶ Comprehensive diagnostics
- ▶ Individualized recalls
- ▶ Risk-based treatment

Benefits for orthodontic patients

- ▶ Personalized attention
- ▶ Early detection
- ▶ Long-term preservation of teeth

The scientific basis

- ▶ Caries and periodontal disease are closely associated with bacterial biofilm (Marsh & Martin 2003).

Plaque Test – the fluorescent disclosing liquid

Biofilm made visible with the fluorescent Plaque Test

Advantages

Selective application

Only the biofilm glows

Fluoresces under any curing light

Benefits

No unsightly staining of the tongue, gums and mucous membrane

Clear examination results

Easy to integrate into routine procedures

Proxylt®

Removal of bacterial biofilm

In order to prevent white spot lesions and gingivitis, the teeth and appliances are systematically and professionally cleaned in the dental practice on a regular basis during orthodontic treatment. Apart from the oral health benefits, professional tooth cleaning promotes “white” and “pink” esthetics. The teeth and gums look good. Even after the brackets and bands are removed.

Focus on individual needs

Proxylt prophylaxis pastes allow needs-oriented treatment. Proxylt pastes clean effectively and gently. Unnecessary wear of tooth structure or roughening of restoration surfaces is avoided with Proxylt. The pastes are available in three different abrasion levels:



With fluoride Proxylt® fine



Proxylt® medium



Proxylt® coarse

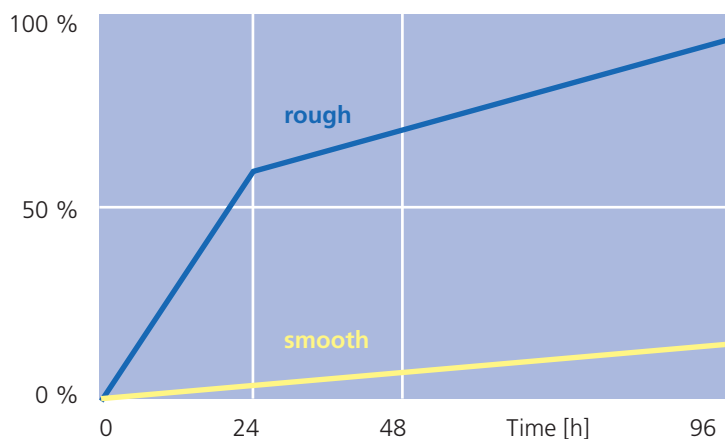


Fluoride-free Proxylt® medium



Tooth surfaces covered with plaque [%]

Smooth tooth surfaces hardly show any plaque growth (Quirynen et al. 1988).





First: Removal of tough bacterial biofilm with the strong blue Proxylt® cleaning paste



Second: Effective cleaning with the fine Proxylt® paste. In the subsequent regular recall appointments, the fine paste is usually adequate.



After cleaning: Application of the fluoride-containing varnish Fluor Protector S
Pictures: Dr L. Enggist, Ivoclar Vivadent AG, Liechtenstein

Smooth surfaces prevent the formation of bacterial biofilms

Apart from hard and healthy dental enamel, significantly less resistant dentin, filling materials and the transition to the bonding material may have to be cleaned. The use of harsh agents must be avoided, as they roughen the surfaces. And, rough surfaces promote the growth of bacterial biofilm.

Gentle cleaning

Since orthodontic patients need to have their teeth cleaned professionally on a regular basis, this procedure should be as effective and gentle as possible. The fine pumice-free Proxylt paste is suitable for this purpose. It is applied with a soft rubber cup or brush. The polishing paste produces a natural-looking gloss and smooth surfaces.

Special tip

- ▶ Bacterial biofilms can be made visible with the fluorescent Plaque Test.

Benefits for the dental team

- ▶ Long-term gentle cleaning
- ▶ Well-being of patients
- ▶ Effective prevention of white spot lesions and gingivitis

Benefits for orthodontic patients

- ▶ Well-being
- ▶ Perceptibly smooth surfaces
- ▶ Long-term beautiful teeth

Proxylt – the prophy pastes

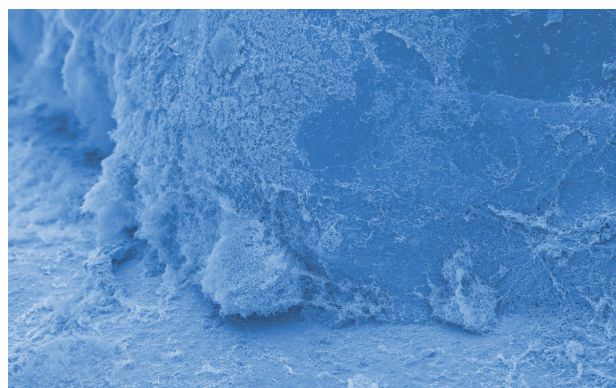
Advantages	Benefits
Different abrasion values	Needs-oriented, gentle and effective cleaning and polishing
Xylitol	Interruption of the bacterial metabolism
Smooth consistency	Good distribution on the teeth and around brackets

The scientific basis

- ▶ Professional tooth cleaning is recommended as a supplement to at-home cleaning measures during orthodontic treatment (Lux & Zingler 2013).

Brackets can provide ideal retention sites for bacterial plaque, SEM images

Prof. Dr.S. Kneist, Germany



Fluor Protector

Superior protection against white spot lesions

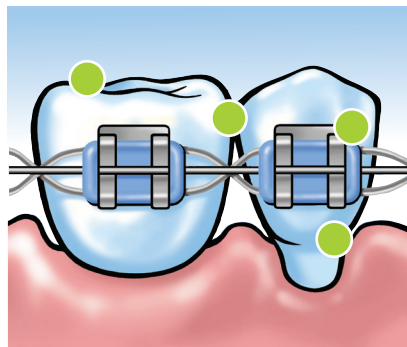
The fluoride provided by toothpaste is often not enough for orthodontic patients. In these cases, additional fluoride treatment is necessary. The professional application of a fluoride varnish, for example, Fluor Protector or Fluor Protector S, is recommended for this purpose.



Comprehensive protection

Fluoride varnishes allow the teeth to be professionally protected against the following conditions:

- ▶ hypersensitivity
- ▶ caries
- ▶ erosion



Protection of problem areas

The low viscosity of Fluor Protector and Fluor Protector S ensures good flow and wetting properties. The varnishes spread easily and readily flow into complex surface structures. Problem areas such as

- ▶ surfaces around brackets and bands
- ▶ exposed cervicals
- ▶ fissures
- ▶ proximal surfaces
- ▶ filling and crown margins
- ▶ porous tooth surfaces

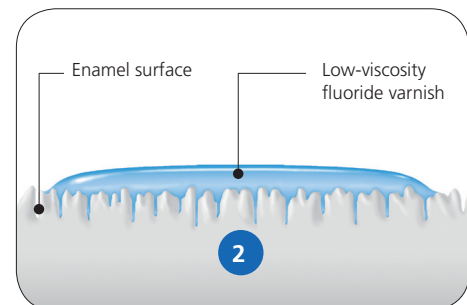
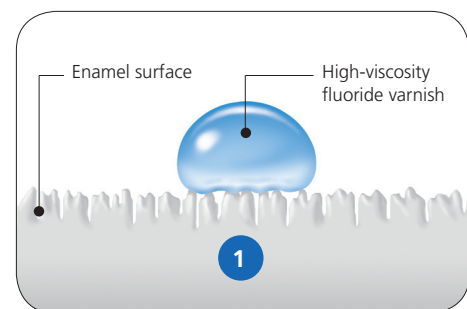
receive the required amount of fluoride and the protection it offers. Numerous international clinical studies and decades of practical experience confirm the effectiveness and the successful results of fluoride varnishes in orthodontic patients.

For individual needs

Fluor Protector and Fluor Protector S differ in their composition, fluoride concentration and delivery form. The varnishes are designed to fulfil different treatment needs.

The effective combination

Patients who wear brackets have to be treated with special dental care products for in-office and at-home use. Fluor Protector Gel, for example, contains fluoride in addition to calcium, phosphate and xylitol. The intensive care gel supplements the effect of the professionally applied protective varnishes. It strengthens the teeth and protects them against acid attacks.



1 Highly viscous fluoride varnishes sit on the tooth surface.

2 The low-viscosity fluoride varnish **Fluor Protector S** spreads easily and readily penetrates into porous surfaces.



Fluor Protector – the fluoride varnish with decades of experience

Advantages

1,000 ppm fluoride in a homogeneous solution; after the varnish has dried, the concentration is approx. ten times higher

Decades of experience

Clear, colourless

Benefits

For different age groups

Long-term clinical success

Optimum esthetics

Fluor Protector S – the fluoride varnish in a dispensing tube

Advantages

7,700 ppm fluoride in a homogeneous solution; after the varnish has dried, the concentration is approx. four times higher

Mild taste and smell

Dispensing tube or Single Dose units

Benefits

Ready for immediate use

Recommended for sensitive patients

Efficient or individualized

Fluor Protector Gel – the intensive care gel

Advantages

Calcium plus 1,450 ppm fluoride plus phosphate

Xylitol

Provitamin D-panthenol

Benefits

Comprehensive protection for teeth

Interruption of the bacterial metabolism

Conditioning of gingival tissue

Special tip

- ▶ The chlorhexidine-containing Cervitec® Plus varnish reduces the high concentration of mutans streptococci in susceptible orthodontic patients. This enhances the effectiveness of fluoride.

Benefits for the dental team

- ▶ Highly effective fluoride varnishes and intensive care gel
- ▶ Solutions for individual needs
- ▶ Fast treatment

Benefits for orthodontic patients

- ▶ Fast, comfortable treatment
- ▶ Clinically proven method
- ▶ Long-term beautiful teeth

The scientific basis

- ▶ The routine application of a fluoride varnish during the treatment with fixed orthodontic appliances can reduce the development of white spot lesions in the vicinity of brackets (Stecksén-Blicks et al. 2007).



Cervitec®

Individualized protection for at-risk areas

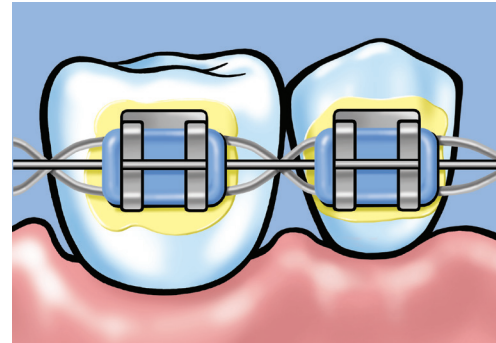
Standard oral hygiene measures and professional tooth cleaning and fluoridation are not adequate to protect the teeth from harm in orthodontic patients with high germ counts. In these cases, it is necessary to selectively reduce the number of relevant germs.

Cervitec® gives microorganisms a hard time

A high number of certain germs in the mouth compromises the health of the teeth, gums and mucous membrane and therefore the envisaged outcome of the orthodontic treatment.

The active ingredient chlorhexidine can minimize this risk. The chlorhexidine-containing Cervitec products offer individualized in-office and at-home solutions, in terms of the active-ingredient concentration, the delivery form and the application method:

- ▶ Cervitec F, the protective varnish
- ▶ Cervitec Gel, the oral care gel
- ▶ Cervitec Liquid, the mouth rinse



Cervitec® F for targeted protection



Cervitec® Gel, the oral care gel





Cervitec F – multiple protection

Advantages	Benefits
1,400 ppm fluoride plus 0.3% chlorhexidine plus 0.5% CPC (cetylpyridinium chloride) Fluoride source: ammonium fluoride	Only one working step: fluoridation and germ control
Professional varnish application	Targeted protection for at risk areas
Optimum flow and wetting behaviour	Treatment of difficult-to-reach areas around brackets and bands

Cervitec Gel – mild, effective oral care

Advantages	Benefits
Xylitol plus provitamin D-panthenol plus 0.2% chlorhexidine plus 900 ppm fluoride Fluoride source: sodium fluoride	Powerful combination for the care of gums, mucous membrane and teeth
Smooth consistency	Optimum distribution on complex surfaces
Mild taste	High user compliance

Cervitec Liquid – powerful without alcohol

Advantages	Benefits
Xylitol plus 0.1% chlorhexidine plus essential oil	- Fresh breath - Interruption of the bacterial metabolism
Alcohol-free	Suitable for sensitive patients
Pleasant taste	High level of patient compliance

Special tip

- ▶ Orthodontic patients can enhance the effect of the professional treatment with Cervitec F by using Cervitec Gel at home.

Benefits for the dental team

- ▶ Customized solutions for germ control
- ▶ Clinically proven preparations
- ▶ Easy to integrate into the treatment regime

Benefits for orthodontic patients

- ▶ Mild taste of all Cervitec products
- ▶ Products recommended by dental professionals
- ▶ Painless treatment

The scientific basis

- ▶ A treatment protocol is recommended which will help to remineralize the dental enamel during orthodontic treatment and control the dynamics of cariogenic germs at the same time (Kneist et al. 2008).

Cervitec® Gel is easy to distribute.



Heliosit® Orthodontic and...

Fast placement of brackets

Brackets should adhere well to the teeth. Furthermore, they should be easy to remove after the treatment. Heliosit® Orthodontic is available for bonding purposes together with the Bluephase® Style curing light.

Heliosit Orthodontic for a strong bond

The single-component, composite-based Heliosit Orthodontic allows a fast and easy bonding of brackets made of metal or ceramic. The stable consistency facilitates the application and positioning of the brackets. The Bluephase Style curing light quickly cures the bonding material.

Heliosit Orthodontic – the bonding material for brackets

Advantages	Benefits
High bond strength	Good adhesion
Highly transparent	Esthetic bonding
Many years of clinical experience	Reliability

Bonding of brackets with Heliosit Orthodontic

Pictures: Dr T. Repetto-Bauckhage, Ivoclar Vivadent AG, Liechtenstein



Etching with Total Etch



Application of Heliosit® Orthodontic



Positioning of the brackets



Bluephase® Style



Bluephase Style for every use

Due to the specially developed Polywave® LED with a broadband spectrum of 385 to 515 nm Bluephase Style is capable of polymerizing all current photoinitiators and dental materials. The shortened light guide can be rotated by 360 degrees enabling easy access to all tooth surfaces with brackets.

The parallel light guide generates a homogeneous light scattering, resulting in a consistent polymerization. Bluephase Style can be held like a pen or like a pistol. Given the light's low weight and balanced weight distribution, the strain exerted on the hand and arm is reduced, regardless of the size of the hand.

Special tip

- ▶ The enamel areas adjacent to the brackets can be protected with the fluoride-containing varnish Fluor Protector S.

Benefits for the dental team

- ▶ Fast bonding
- ▶ High degree of reliability and safety
- ▶ Coordinated system

Benefits for orthodontic patients

- ▶ Good adhesion of brackets
- ▶ Proven method
- ▶ Enhanced esthetics

The scientific basis

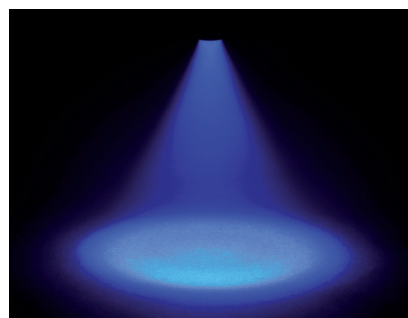
- ▶ Study results have shown that LED devices with a high light intensity are suitable for bonding brackets, even at an exposure time of 10 seconds (Palomares et al. 2008).

Bluephase Style – the curing light

Advantages	Benefits
Polywave® LED	Can be used with every bonding material
High-performance LED (1,100 mW/cm ²)	Short curing time
Rotatable light guide	Easy polymerization for bonding brackets



Light-curing with Bluephase® Style



Homogeneous light scattering of Bluephase® Style



VivaStyle® Paint On Plus

Serious whitening

Many adult patients like to have their teeth whitened after undergoing orthodontic treatment. VivaStyle® Paint On Plus is available for lightening stained natural teeth.

Professional decisions

Various treatment options involving the innovative tooth whitener in varnish form are available in accordance with the diagnosis and the individual patient needs:

- ▶ in the dental office or at home

VivaStyle Paint On Plus

Intensive treatments can be undertaken in the dental practice to produce fast whitening results. For this purpose, VivaStyle Paint On Plus is applied several times in succession during one appointment (Mata & Marques 2006).



VivaStyle Paint On Plus

Orthodontic treatment



After orthodontic treatment



After tooth whitening



Pictures: Dr A. Peschke, Ivoclar Vivadent AG, Liechtenstein

VivaStyle Paint On Plus – effective lightening without a tray

Advantages

- Varnish system containing 6% hydrogen peroxide
- Fast release of active ingredients
- Provitamin D-panthenol

Benefits

- Controlled application and action on the right spot
- Only ten minutes per application
- Conditioning of the gingiva

Special tip

- ▶ During and after tooth whitening, it is advisable to use Fluor Protector Gel, which contains calcium, fluoride and phosphate.

The scientific basis

- ▶ VivaStyle Paint On Plus has been proven to effectively lighten teeth (Mata & Marques 2006).

Synchronized solutions

Oral Health Management during and after orthodontic treatment



Ortho Care Program

For a bright and healthy smile

For orthodontic treatment, Ivoclar Vivadent offers the Ortho Care Program. It will allow you to fulfil your own personal standards as well as the individual requirements of your patients in terms of function and esthetics.

During orthodontic treatment, the teeth and mouth require professional Oral Health Management solutions. Ivoclar Vivadent is there to assist you. The Ortho Care products for prevention, treatment, bonding and care enable you to enhance the services of your practice in anticipation of the future.

Our service to you We are happy to assist you.

We will provide you with the following information for your office and your patients:

- ▶ brochures
- ▶ flow charts
- ▶ treatment plans
- ▶ study results
- ▶ documentations
- ▶ articles
- ▶ videos
- ▶ presentations



Production and Distribution:
Ivoclar Vivadent AG
Bendererstrasse 2
FL-9494 Schaan
Principality of Liechtenstein
Tel. +423 235 35 35
Fax +432 235 33 60
www.ivoclarvivadent.com

Descriptions and data
constitute no warranty
of attributes.
© Ivoclar Vivadent AG,
Schaan/Liechtenstein.
674531/02.05.2019

ivoclar
vivadent[®]
passion vision innovation