



PRODUCT CATALOG

CLINICAL

Shade Selection

Chromascop	5
A–D Shade Guide with Bleach Shades	
IPS Natural Die Material Shade Guide	
IPS e.max Shade Navigation App	

Composites

<i>Direct Restoratives</i>	8
Tetric-Line System Kits	11
<i>4-mm Composites</i>	13
Tetric PowerFlow	
Tetric PowerFill	
Tetric EvoFlow Bulk Fill	
Tetric EvoCeram Bulk Fill	
<i>Conventional Composites</i>	15
Tetric EvoFlow	
Tetric EvoCeram	
IPS Empress Direct	
IPS Empress Direct Effect	
Tetric	
Heliomolar	
Heliomolar HB	
Heliomolar Flow	
<i>Characterization</i>	25
IPS Empress Direct Color	
IPS Empress Direct Opaque	
<i>Compomers</i>	26
Compoglass F	

Liners

Vivaglass Liner	27
-----------------	-----------

Adhesives/Etchants

Adhese Universal	29
ExcITE F	
ExcITE F DSC	
Syntac	
Heliobond	
Total Etch	
Email Preparator blue	

Amalgams

Amalcap Plus	33
Vivacap	

CAD/CAM Materials for CEREC®/PlanMill®

<i>All you need for restorations in a single visit</i>	34
IPS e.max	
IPS e.max CAD	
IPS e.max ZirCAD	
IPS Empress CAD	
Tetric CAD	
Telio CAD	
<i>Implant Prosthetics</i>	56
Abutment Solutions	
Multilink Hybrid Abutment	
SR Connect	
<i>Implant Care</i>	58
<i>Universal Stains and Glaze Assortment</i>	59
IPS e.max CAD Crystall./Shades/Stains/Glaze	
IPS Object Fix Flow/IPS Object Putty	
IPS e.max CAD Crystallization Tray	
Tweezers	
IPS Ceramic Etching Gel	
All-Ceramic Preparation Guide	
IPS e.max Packaging	

Temporary Restorations

Telio CS C&B	64
Telio CS Link	
Telio CS Desensitizer	
Telio CS Inlay	
Telio CS Onlay	

Cementation Materials

Variolink Esthetic	70
SpeedCEM Plus	
Multilink Automix	
Vivaglass CEM PL	
Monobond Etch & Prime	
Monobond Plus	
Ivoclean	
Liquid Strip	
Heliosit Orthodontic	

Ceramic Repair

Ceramic Repair	78
----------------	-----------

Endodontics/Core Build-Up

ApexCal	79
Apexit Plus	
FRC Postec Plus	
MultiCore Flow	

Impression Materials

Virtual	85
Virtual 380	
Virtual CADbite	
Centric Tray	

Equipment

Bluephase PowerCure	88
Bluephase G4	
Bluephase Meter II	
Silamat S6	
Programat CS2	
Programat CS3	
Programat CS4	
Programat Sinter Tray	
Sintering Furnace	
Temperature Checking Set MTH	
Sintering Furnace	
Temperature Checking Set UTH	
Sintering Furnace	
Temperature Checking Set Starter Kit	
Programat Sinter Tray Fork	
Vacuum Pump VP5	
Vacuum Pump VP3 easy	
Vacuum Pump Filter Kit	
Programat Firing Tray Kit 2	
Metal Pins for Firing Tray	
Ceramic Sleeves for Metal Pins	
Automatic Temperature Checking Set	
"ATK 2"	
Firing Tongs	
Programat WLAN Kit	
Digital Shade Assistant Starter Kit	
Digital Shade Assistant Holder Kit	
UTS 3D Universal Transferbow System	
Gnathometer M Typ 2	
Stratos 100	
Stratos 200	
Stratos 300	

Professional Care Products

<i>Oral Health Management</i>	104
Plaque Test	
Proxyt	
Cervitec F	
Cervitec Plus	
Cervitec Liquid	
Cervitec Gel	
Fluor Protector S	
Fluor Protector	
Fluor Protector Gel	
Helioseal / Helioseal F / Helioseal Clear	
VivaSens	

**Tooth Whitening
Tooth Jewellery**

VivaStyle	114
VivaStyle Paint On Plus	
VivaStyle 10% / 16%	
Skyce	

Clinical Accessories

OptraGate	117
OptraDam Plus	
OptraSculpt Next Generation	
OptraSculpt Pad	
OptraGloss	
Astropol	
Politip	
OptraStick	
Cavifil Injector	
VivaPad	
Polyart Mixing Pad	
Brush Holders	
Brushes, hard	
Brushes, soft	
Vivabrush	
VivaBrush G	
Vivadent Applicator	
Cannulas	

Chromascop®

The Chromascop shade guide is an instrument for the shade selection of various Ivoclar Vivadent products shaded according to the Chromascop shade system.

The individual shades are logically laid out on the Chromascop for accurate and efficient shade selection. The 20 shades are divided into five clearly arranged, removable shade groups.



Advantages:

- Easy handling
- Logical, chromatic arrangement of shades
- Disinfectable

Delivery forms

Chromascop® Shade guide	1x	529479
-------------------------	----	--------

A–D Shade Guide with Bleach Shades

The A-D Shade Guide is an instrument for the selection of tooth shades according to the A–D and Bleach BL shade system.

The 16 basic shades in the shade groups A, B, C and D, supplemented by the four modern Bleach shades BL 1 to BL 4, are practical to use and represent the ideal tool for dentists and dental technicians.



Advantages:

- 16 A–D shades
- 4 Bleach shades
- Sterilizable
- Autoclavable

Delivery forms

A–D Shade Guide		
Complete (16 and 4 shades)	1x	628587
Complete with name embossing	1x	637531
Basic (16 shades)	1x	628623
Bleach (4 shades)	1x	628605

IPS® Natural Die Material Shade Guide

Determination of the preparation shade in the fabrication of all-ceramic restorations

The shade guide enables optimum selection of the shade after preparation. The shade is selected on the basis of the most severely discoloured part of the prepared tooth.

The IPS Natural Die Material Shade Guide allows you to fabricate a customized model die with which you can then accurately select the shade and brightness of all-ceramic restorations.



Indications:

Determination of the preparation shade after tooth preparation

Advantages:

- Easy and accurate reproduction of shades due to having determined the preparation shade
- Fabrication of a customized model die
- Autoclavability

Shades:

9 (ND 1, ND 2, ND 3, ND 4, ND 5, ND 6, ND 7, ND 8, ND 9)

Delivery forms

IPS® Natural Die Material Kit 597078

IPS Natural Die Material, 9 shades	1 x 8 g each
IPS Natural Die Material Separator	1 x 20 ml
IPS Natural Die Material shade guide	1x
var. accessories	

IPS® Natural Die Material Kit Promo 638177

IPS Natural Die Material Kit (597078)	1x
IPS Natural Die Material shade guide	4x

Refill IPS® Natural Die Material 1 x 8 g each

ND 1	597080
ND 2	597081
ND 3	597082
ND 4	597083
ND 5	597084
ND 6	597085
ND 7	597086
ND 8	597087
ND 9	597088

IPS® Natural Die Material Separator 1 x 20 ml **597089**

Die pins 10 x **554028**

IPS® Condenser 10 x **554030**

IPS® Natural Die Material shade guide (autoclavable) 1x **597090**

Example of the preparation shade effect



Restoration: Veneer (0.5 mm, IPS e.max® CAD HT B1)
Cementation material: Variolink® Esthetic neutral
Preparation shade: IPS® Natural Die Material, ND 1 – ND 9

IPS e.max® Shade Navigation App

App for block, ingot and disc selection

The IPS e.max® Shade Navigation App is a helpful tool for selecting the appropriate block, ingot or disc.

It takes into consideration all the factors (tooth colour, indication, preparation shade, layer thickness and material type) that influence the overall shade of the restoration.

Indications:

For establishing the translucency and shade of:

- IPS e.max CAD
- IPS e.max ZirCAD
- IPS e.max Press

Advantages:

- Precise translucency and shade recommendations simplify the selection of blocks, ingots and discs
- All the major influencing factors are taken into account (tooth shade, indication, preparation shade, layer thickness, material type)
- Direct, visual shade comparison with A-D shades



IPS e.max®
Shade
Navigation
App

Five easy steps
to finding
the correct
shade and
translucency



The app is free for download on Android or iOS Smartphones and tablets from the Google Play Store or Apple App Store.



Direct Restoratives



3 instead of **2**
patients

in the same time
without compromises in quality*

Start scheduling 30 instead of 45 minutes to place
a Class II MOD restoration. We will show you how!

Efficient
Esthetics



Isolate



Bond



Restore



Cure

www.ivoclarvivadent.com

Ivoclar Vivadent AG
Bendererstr. 2 | 9494 Schaan | Liechtenstein | Tel. +423 235 35 35 | Fax +423 235 33 60

ivoclar
vivadent®
passion vision innovation



Efficient Esthetics

Products that are optimally coordinated for direct restorative procedures enhance the efficiency with which high-quality esthetic restorations can be achieved.



1 Isolate

Effective isolation with **OptraGate**[®], cotton rolls and saliva ejector



2 Bond

Direct intraoral application of **Adhese**[®] **Universal** with the efficient VivaPen[®]



3 Restore

Tetric[®] – The solution for all cavities

Lifelike, esthetic restorations with **IPS Empress**[®] **Direct**



4 Contour

Time-saving contouring with **OptraSculpt**[®] due to its anti-stick effect



5 Cure

Reliable and fast curing with the **Bluephase**[®] curing units



6 Polish

High-gloss polishing in only one step with **OptraPol**[®]

Tetric®

The composite



*Tetric® PowerFill and Tetric® PowerFlow compared to Tetric EvoCeram® and Tetric EvoFlow®, data available upon request.

The solution for all cavities

- Natural shade blend thanks to chameleon effect
- Time savings of up to 57%*
- One kit for all cavities

Efficient
Esthetics



Isolate



Bond



Restore



Cure

ivoclar
vivadent®
passion vision innovation

Tetric®

One solution for all cavities

The Tetric®-Line of products consists of four well-coordinated composite resins for your direct restorative needs.

Tetric EvoCeram® is a sculptable universal composite and **Tetric EvoFlow®** is a flowable universal composite for anterior and posterior restorations.

Tetric PowerFill is a sculptable and **Tetric PowerFlow** a flowable posterior 4-mm composite with light-curing times starting from 3 seconds.

All four composites are offered together in system kits, which include an overview of their indications and possibilities of combination to enable users to see which material is best used when and where.

Each system kit comprises:

- Tetric EvoCeram – sculptable, for conventional layering techniques
- Tetric EvoFlow – flowable, for conventional layering techniques
- Tetric PowerFill – sculptable, application in increments of up to 4 mm
- Tetric PowerFlow – flowable, application in increments of up to 4 mm
- Adhese® Universal VivaPen – the universal adhesive system

Delivery forms

Syringe

Tetric®-Line System Kit syringe

704426

4 syringes, 3 g each (1x A2, A3, A2 Dentin Tetric EvoCeram, 1x 1/4 A Tetric PowerFill)
2 Luerlock syringes, 2 g each (1x A3 Tetric EvoFlow, 1x 1/4 A Tetric PowerFlow)
1 VivaPen Adhese Universal, 2 ml
var. accessories

Mixed

Tetric®-Line System Kit mixed

704451

35 Cavifils, 0.2 g each (10 x 1/4 A Tetric PowerFill, 10 x A2, A3 Tetric EvoCeram, 5 x A2 Dentin Tetric EvoCeram)
2 Luerlock syringes, 2 g each (1x A3 Tetric EvoFlow, 1x 1/4 A Tetric PowerFlow)
1 VivaPen Adhese Universal, 2 ml
var. accessories



Experience the difference with **3s PowerCure**



When direct Class I and II restorations are placed in permanent posterior teeth, 3-second exposures from the occlusal aspect are sufficient for all curing steps with the Bluephase PowerCure in the 3sCure mode. Simply expose Adhese Universal, Tetric PowerFill and Tetric PowerFlow to the light-intensity of 3,000 mW/cm² produced by the curing light. You will notice right away that the curing time you require is considerably reduced. At the same time, you will continue to achieve the customary high-quality esthetic results.



Tetric® PowerFlow

Tetric® PowerFlow is a flowable, light-curing, radiopaque 4-mm composite for direct restorative treatments in posterior teeth. It offers short curing times from 3 seconds.

Available in three dentin-like Universal shades ^{IV}A, ^{IV}B und ^{IV}W.

Indications:

- As initial layer / first increment in Class I and II composite restorations in permanent posterior teeth
- Restoration of deciduous teeth



Advantages:

Esthetics

- Lifelike esthetics in the posterior region
- Ivocerin® and the Aessencio® technology allow you to achieve the same high esthetics as with conventional composites

Quality

- Increased process reliability thanks to fewer layers
- Fewer errors thanks to short curing times starting from 3 seconds

Efficiency

- Time savings of up to 57% in the posterior region compared to the conventional technique*

* Compared with Tetric EvoCeram and Tetric EvoFlow; data available on request.

Shades:

Three dentin-like universal shades

- ^{IV}A: Universal A shade
- ^{IV}B: Universal B shade
- ^{IV}W: White shade for deciduous teeth or light-coloured permanent teeth

Delivery forms

Syringes

Refill	1 x 2 g	see p. 20
1 syringe, 2 g each (3 shades)		

Cavifils

Refill	20 x 0.2 g	see p. 20
20 Cavifils, 0.2 g each (3 shades)		

Shade guide	1x	668082
Application tips ø 1.2 mm (black)	1 x 20	669838

Tetric® PowerFill

Tetric® PowerFill is a sculptable, light-curing, radiopaque 4-mm composite for direct restorative treatments in posterior teeth. It offers short curing times starting from 3 seconds.

Available in three enamel-like Universal shades ^{IV}A, ^{IV}B und ^{IV}W.

Indications:

- Restorations in the posterior region (Class I and II, including the replacement of individual cusps)
- Class V restorations (cervical caries, root erosion, wedge-shaped defects)
- Reconstructive build-ups
- Restoration of deciduous teeth



Advantages:

Esthetics

- Lifelike esthetics in the posterior region
- Ivocerin® and the Aessencio® technology allow you to achieve the same high esthetics as with conventional composites

Quality

- Increased process reliability thanks to fewer layers
- Fewer errors thanks to short curing times starting from 3 seconds

Efficiency

- Time savings of up to 57% in the posterior region compared to the conventional technique.*

* Compared with Tetric EvoCeram and Tetric EvoFlow; data available on request.

Shades:

Three enamel-like universal shades

- ^{IV}A: Universal A shade
- ^{IV}B: Universal B shade
- ^{IV}W: White for light-coloured permanent teeth

Delivery forms

Syringes

Refill	1 x 3 g	see p. 20
1 syringe, 3 g each (3 shades)		

Refill	3 x 3 g	see p. 20
3 syringes, 3 g each (3 shades)		

Cavifils

Refill	20 x 0.2 g	see p. 20
20 Cavifils, 0.2 g each (3 shades)		

Shade guide	1x	668082
--------------------	-----------	---------------

Tetric EvoFlow® Bulk Fill

Flowable and highly efficient 4-mm bulk-fill composite suitable as a first volume layer in Class I and II restorations.

Indications:

- As a first layer / first increment in composite restorations of Class I and II in permanent teeth
- Restoration of deciduous teeth

Tetric EvoFlow® Bulk Fill restorations are capped with e.g. Tetric EvoCeram® Bulk Fill.



Advantages:

Esthetics

- Chameleon effect ensures a natural shade blend
- Flowable dentin-like volume replacement material

Quality

- Layer thickness up to 4 mm
- Ideal combination with Tetric EvoCeram Bulk Fill

Efficiency

- Curing time of 10 seconds (> 1,000 mW/cm²)
- Time savings of up to 47% compared to the conventional technique*

*Compared with Tetric EvoCeram and Tetric EvoFlow; data available on request.

Shades:

Three dentin-like universal shades

- ^{IV}A: Universal A shade
- ^{IV}B: Universal B shade
- ^{IV}W: White shade for deciduous teeth or light-coloured permanent teeth

Delivery forms

Syringes

Refill	1 x 2 g	see p. 20
1 syringe, 2 g each (3 shades)		

Cavifils

Refill	20 x 0.2 g	see p. 20
20 Cavifils, 0.2 g each (3 shades)		

Shade guide	1x	667472
Application tips ø 1.2 mm (black)	1 x 20	669838

Tetric EvoCeram® Bulk Fill

Sculptable and highly efficient 4-mm bulk-fill composite for the posterior region.

Indications:

- Restoration of deciduous teeth
- Restoration of posterior teeth (Classes I and II, including reconstruction of individual cusps)
- Class V restorations (cervical caries, root erosion, wedge-shaped defects)
- Reconstructive build-up
- Extended fissure sealing in molars and premolars



Advantages:

Esthetics

- Chameleon effect ensures a natural shade blend
- Enamel-like volume replacement material

Quality

- Layer thickness up to 4 mm

Efficiency

- Curing time of 10 seconds (> 1,000 mW/cm²)
- Time savings of up to 47% compared to the conventional technique*

*Compared with Tetric EvoCeram and Tetric EvoFlow; data available on request.

Shades:

Three enamel-like universal shades

- ^{IV}A: Universelle A-Farbe
- ^{IV}B: Universelle B-Farbe
- ^{IV}W: White shade for deciduous teeth or light-coloured permanent teeth

Delivery forms

Syringes

Refill	1 x 3 g	see p. 20
1 syringe, 3 g each (3 shades)		
Refill	3 x 3 g	see p. 20
3 syringes, 3 g each (3 shades)		
Jumbo Refill	10 x 3 g	649792
10 syringes, 3 g each (^{IV} A)		

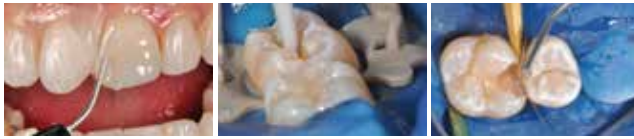
Cavifils

Refill	20 x 0.2 g	see p. 20
20 Cavifils, 0.2 g each (3 shades)		
Jumbo Refill	150 x 0.2 g	649793
150 Cavifils, 0.2 g each (^{IV} A)		
Shade guide	1x	667472

Tetric EvoFlow®

Tetric EvoFlow® is the flowable universal composite for restorations in the anterior and posterior region.

The material can be used as a liner in Class I and II cavities and as a filling material for small and Class V cavities. It is effectively combined with normally viscous composite resins, e.g. Tetric EvoCeram, Tetric PowerFill or IPS Empress® Direct.



Dr. Eduardo Mahn, Santiago, Chile

Indications:

- Initial layer of Class I to V restorations
- Anterior restorations (Class III and IV)
- Class V restorations (cervical caries, root erosion, wedge-shaped defects)
- Small restorations of all types
- Extended fissure sealing
- Splinting of mobile teeth
- Blocking out of undercuts
- Adhesive cementation of translucent indirect composite or ceramic restorations
- Repairs of composite and ceramic veneers

Advantages:

Esthetics

- Chameleon effect ensures a natural shade blend

Quality

- Excellent handling properties to suit every situation

Efficiency

- One solution for all cavities

Shades:

Dentin shades: A2, A3.5, B2

Enamel shades: A1, A2, A3, A3.5, A4, B1, B3

Highly translucent Incisal shade: T

Bleach shades: Bleach XL, Bleach L, Bleach M

Delivery forms

Syringes

Refill	1 x 2 g	see p. 20
1 syringe, 2 g each (14 shades)		

Cavifils

Refill	20 x 0.2 g	see p. 20
20 Cavifils, 0.2 g each (14 shades)		

Shade guide	1x	595952
Application tips ø 0.9 mm (schwarz)	1 x 20	634849

Tetric EvoCeram®

Tetric EvoCeram® is the sculptable universal composite for restorations in the anterior and posterior region.



Indications:

- Restorations of deciduous teeth
- Restorations in the posterior region (Classes I and II)
- Anterior restorations (Classes III, IV)
- Class V restorations (cervical caries, root erosion, wedge-shaped defects)
- Veneering of discoloured anterior teeth
- Splinting of mobile teeth
- Extended fissure sealing in molars and premolars
- Repairs of composite and ceramic veneers
- Build-ups for transparent, removable Invisalign® orthodontic retainers

Advantages:

Esthetics

- Chameleon effect ensures a natural shade blend

Quality

- Proven clinical performance with over 200 million restorations placed worldwide¹ and a clinical survival rate² of 95%

Efficiency

- One solution for all cavities

¹ Based on sales figures

² A total of 890 fillings were monitored worldwide in seven clinical studies over observation periods ranging from 5 to 10 years. The overall survival rate calculated for Tetric EvoCeram® was 95.1 per cent.



Preoperative situation 2004 Final picture taken in 2004 Recall examination 2014

Dr Arnd Peschke, Ivodax Vivadent AG, Liechtenstein



Preoperative situation 2005 Final picture taken in 2005 Recall examination 2014

Prof. Dr Jürgen Manhart, Germany

Shades:

Dentin shades: A2, A3.5, A4, B2

Enamel shades: A1, A2, A3, A3.5, A4, B1, B2, B3, C1, C2, C3, D2, D3

Highly translucent incisal shade: T

Bleach shades: Bleach XL, Bleach L, Bleach M, Bleach I

Delivery forms

Syringes

Refill	3 x 3 g	see p. 21
3 syringes, 3 g each (22 shades)		
Refill	1 x 3 g	see p. 21
1 syringe, 3 g each (22 shades)		
Jumbo Refill	10 x 3 g	
A2		642042
A3		642043

Cavifils

Refill	20 x 0.2 g	see p. 21
20 Cavifils, 0.2 g each (22 shades)		
Shade guide	1x	590292
Jumbo Refill	150 x 0.2 g	
A2		642040
A3		642041

IPS Empress® Direct

The highly esthetic composite



Effortless dental masterpieces

- Lifelike shades for natural-looking restorations
- Long-lasting esthetic results
- Clever mastery of demanding restorations

Efficient
Esthetics



Isolate



Bond



Restore



Cure

ivoclar
vivadent®
passion vision innovation

IPS Empress® Direct

IPS Empress® Direct is a highly esthetic composite for filling cavities in anterior and posterior teeth. It is available in five different translucency levels. Therefore, different types of anatomical features can be faithfully reproduced.



Dr Arnd Peschke,
Ivoclar Vivadent AG,
Liechtenstein

before

after

Indications:

- Anterior restorations (Classes III, IV)
- Posterior restorations (Classes I and II)
- Tooth neck restorations (Class V, e.g. cervical caries, root erosion, wedge-shaped defects)
- Correction of tooth position and tooth shape (e.g. diastema closure, closure of interdental triangles, lengthening of the incisal edge)
- Direct veneers

Advantages:

Esthetics

- Lifelike shades for natural-looking restorations
- Easy application of shade nuances with Trans Opal

Qualität

- Long-lasting esthetic results
- Convenient handling for sophisticated requirements

Efficiency

- Intuitive layering in few steps only

Shades:

Dentin shades (Dentin):

A1, A2, A3, A3.5, A4, IVA5, IVA6, B1, B2, C3, D2, Bleach L, Bleach XL

Enamel shades:

A1, A2, A3, A3.5, A4, B1, B2, B3, B4, C1, C2, C3, D2, D3, Bleach L, Bleach XL

Translucent: Trans 20, Trans 30, Trans Opal

Delivery forms

Syringes

System Kit		686071	
Dentin (A2, A3)	1 x 3 g each		
Enamel (A1, A2, A3)	1 x 3 g each		
Trans 30	1 x 3 g		
Effect Trans Opal	1 x 1.8 g		
Opaque	1 x 1.8 g		
Autoclavable shade guide (Dentin, Enamel/Translucent)	1 x each		
var. accessories			
System Kit		686072	
Dentin (A2, A3)	1 x 3 g each		
Enamel (A1, A2, A3)	1 x 3 g each		
Trans 30	1 x 3 g		
Effect Trans Opal	1 x 1.8 g		
Opaque	1 x 1.8 g		
OptraSculpt Pad Instrument	1 x		
OptraSculpt Pad Refill (4 mm)	1 x		
Autoclavable shade guide (Dentin, Enamel/Translucent)	1 x each		
var. accessories			
Refill	1 x 3 g	see p. 21	
1 syringe, 3 g each (32 shades)			
Shade guide IPS Empress Direct Dentin	1x	627214	
Shade guide IPS Empress Direct Enamel/Translucent	1x	627215	

Cavifils

System Kit		686093	
Dentin (A2, A3)	10 x 0.2 g each		
Enamel (A1, A2, A3)	10 x 0.2 g each		
Trans 30	10 x 0.2 g		
Effect Trans Opal	1 x 1.8 g		
Opaque	1 x 1.8 g		
Autoclavable shade guide (Dentin, Enamel/Translucent)	1 x each		
var. accessories			
System Kit		686095	
Dentin (A2, A3)	10 x 0.2 g each		
Enamel (A1, A2, A3)	10 x 0.2 g each		
Trans 30	10 x 0.2 g		
Effect Trans Opal	1 x 1.8 g		
Opaque	1 x 1.8 g		
OptraSculpt Pad Instrument	1 x		
OptraSculpt Pad Refill (4 mm)	1 x		
Autoclavable shade guide (Dentin, Enamel/Translucent)	1 x each		
var. accessories			
Refill	10 x 0.2 g	see p. 21	
10 Cavifils, 0.2 g each (32 shades)			

IPS Empress® Direct Effect

With the flowable characterization materials of the IPS Empress Direct Effect ranges any restorations can be creatively customized. The materials are simply applied just underneath the final covering layer.



Indications:

- For creating lifelike esthetic effects in the incisal area
- Anterior restorations (Classes III, IV)
- Small restorations of all types
- Repairs of composite/ceramic veneers

Advantages:

- Ideal addition to the IPS Empress Direct range of materials for the creation of special effects in the incisal area
- Unique Trans Opal Flow shade for a lifelike esthetic opalescence
- Lifelike translucency for the optimum reproduction of the incisal area
- Ideal consistency for contouring with the brush

Shades:

Trans Opal, Trans 30, Bleach XL

Delivery forms

Syringes

Refill	1 x 1.8 g	see p. 21
Syringe, 1.8 g each (3 shades)		
Application tips ø 0.9 mm (black)	1 x 20	634849

Tetric®

Light-curing, universal microhybrid composite with a special filler composition. Available in syringes and Cavifils.



before



after



before



after: with Tetric Basic White

Indications:

- Anterior and posterior restorations

Advantages:

- Excellent working properties
- Does not stick to the instrument
- Optimum modelling properties
- High abrasion resistance
- Very high radiopacity
- Fluoride release
- Natural shade effect (three degrees of translucency and ten shades available)
- Stability of shade

Shades:

Universal shades: A1, A2, A3, A3.5, A4, B2, B3

Highly translucent enamel shade: T

Dentin shade: A3.5 Dentin

Basic White

Delivery forms

Syringes

Refill	1 x 3 g	see p. 21
1 syringe, 3 g each (9 shades)		

Refill	3 x 3 g	see p. 21
3 syringes, 3 g each (Basic White)		

Cavifils

Refill	20 x 0.2 g	see p. 21
20 Cavifils, 0.2 g each (9 shades)		

Refill	60 x 0.2 g	see p. 21
60 Cavifils, 0.2 g each (Basic White)		

Shade guide	1x	612524
--------------------	-----------	---------------

Heliomolar®

Light-curing universal microfilled composite in syringes and Cavifils.



Indications:

- Anterior and posterior restorations

Advantages:

- Easy direct application by means of Cavifils and the corresponding Injector
- Polishable to a high gloss; stable shade
- Excellent marginal adaptation and durable marginal seal
- High stability of shape and durable contact points
- High radiopacity and continuous fluoride release
- Excellent abrasion resistance

Shades:

105/–, 110/A1, 110T/A1T, 140/A2, 210/A3, 410/D3, 420T/–, 510/C3

Delivery forms

Syringes

Refill	1 x 3 g	see p. 21
1 syringe, 3 g each (8 shades)		

Cavifils

Refill	20 x 0.25 g	see p. 21
20 Cavifils, 0.25 g each (8 shades)		
Shade guide	1x	550577

Heliomolar® HB

Fast, light-curing, high-viscosity, micro-filled composite material based on mouldable ceramics technology in syringes and Cavifils.



before



after

Indications:

- Restorations in the posterior region (Classes I and II, also occlusion-bearing)
- Restorations in deciduous dentitions

Advantages:

- Easy handling characteristics thanks to high viscosity
- Simplified creation of proximal contact areas
- High abrasion resistance
- High radiopacity (265% Al)
- Good polishing
- Low shrinkage
- Available in syringes or specifically designed Cavifils

Shades:

110/A1, 140/A2, 210/A3, B1

Delivery forms

Syringes

Refill 1 x 3 g [see p. 21](#)
1 syringe, 3 g each (4 shades)

Cavifils

Refill 20 x 0.25 g [see p. 21](#)
20 Cavifils, 0.25 g each (4 shades)

Heliomolar® Flow

Light-curing flowable microfilled composite in syringes.



Indications:

- Cervical restorations
- Anterior restorations
- Small restorations in the posterior region
- Extended fissure sealing in molars and premolars
- Repairs of composite and ceramic veneers
- Blocking out of undercuts
- Adhesive cementation of indirect composite or ceramic restorations
- Splinting of mobile teeth
- As initial layer under Class I and II restorations
- Finishing layer on viscous composite material

Advantages:

- Convenient syringes containing 1.6 g of material
- Very thin, pre-bent metal cannulas
- Easy access to mini-cavities
- Bubble-free direct application
- Accurate, economical application

Shades:

105/–, 110/A1, 140/A2, 210/A3, 410/D3, 420T/–

Delivery forms

Refill 1 x 1.6 g [see p. 21](#)
1 syringe, 1.6 g each (6 shades)

IPS Empress® Direct Color

For true-to-nature characterizations.



Indications:

- Individual characterization of direct and lab-fabricated composite restorations
- Masking of discoloured tooth structure
- Characterization of CAD/CAM veneers fabricated chairside

Advantages:

- True-to-nature characterization of high-end composite and CAD/CAM-fabricated restorations
- User-friendly direct application without dilution
- High masking capability even when applied in thin layers
- 0.4-mm tips for precise application
- The ideal complement to IPS Empress® Direct and IPS Empress CAD

Shades:

white, honey, ochre, brown, violet, blue, grey

Delivery forms

Assortment		637898
IPS Empress Direct Color	7 x 1 g each	
Shades: white, honey, ochre, brown, violet, blue, grey		
IPS Empress Direct Opaque	1 x 1.8 g	
var. accessories		

Refill	1 x 1 g	Possible applications	
white		<ul style="list-style-type: none"> • Imitating enamel stains • Simulating halo effects • Accentuating cusps and ridges 	637899
honey		<ul style="list-style-type: none"> • Emphasising the dentin core • Highlighting fissures • Imitating individual enamel characteristics 	637900
ochre			637903
blue		<ul style="list-style-type: none"> • Simulating translucent enamel areas • Imitating opalescent areas 	637901
violet			637902
grey			637905
brown		<ul style="list-style-type: none"> • Imitating discoloured fissures, pits and enamel cracks 	637904
Application tips ø 0.4 mm (black)			1 x 20 634847

IPS Empress® Direct Opaque

IPS Empress® Direct Opaque is a light-curing opaquing material suitable for masking exposed metal surface and discoloured tooth structures.



Indications:

- Masking of
- exposed metal surfaces when repairing damaged ceramic or composite veneers intraorally
 - discoloured tooth structure

Advantages:

- High masking capability even when applied in thin layers
- Universal opaque shade, no shade matching required

Shade:

opaque

Delivery forms

Assortment		637898
IPS Empress Direct Color	7 x 1 g each	
white, honey, ochre, brown, purple, blue, grey		
IPS Empress Direct Opaque	1 x 1.8 g	
var. accessories		
Refill	1 x 1.8 g	637897AN
1 syringe, 1.8 g (opaque)		
Application tips ø 0.9 mm (black)	1 x 20	634849

Compoglass® F

Light-curing, compomer-based restorative material in Cavifils.



Indications:

- Restorations in deciduous teeth
- Class III and V restorations
- Intermediate restorations

Advantages:

- Application without phosphoric acid etching possible
- High fluoride release
- Easy direct application by means of Cavifils and the corresponding Cavifil Injector
- Excellent esthetic properties
- Easy contouring and polishing
- No rubber dam required

Shades:

105/–, 110/A1, 140/A2, 210/A3, 230/A3.5, 340/A4

Delivery forms

Refill **20 x 0.25 g** **see p. 21**
20 Cavifils, 0.25 g each (6 shades)

Vivaglass® Liner

Light-curing glass-ionomer cement for bases/liners.



Advantages:

- Continuous fluoride release
- Good dentin adhesion
- Outstanding radiopacity
- Light-curing, thus easy to process

Delivery forms

Intro Pack	1 x 10 g / 1 x 8 g	536452
-------------------	---------------------------	---------------

Powder, Liquid, var. accessories

Refill Powder	1 x 10 g	535840
----------------------	-----------------	---------------

Refill Liquid	1 x 8 g	535839
----------------------	----------------	---------------

Adhese[®] Universal

The universal adhesive



Click & Bond

- High bond strength (>25 MPa) on wet and dry dentin
- Efficient VivaPen[®] delivery form
- Single-component adhesive suitable for intraoral applications

Efficient
Esthetics



Isolate



Bond



Restore



Cure

ivoclar
vivadent[®]
passion vision innovation

Adhese® Universal

The universal adhesive

Adhese® Universal is a single-component, light-cured adhesive for direct and indirect bonding procedures that features compatibility with all etching techniques: self-etch, selective-enamel-etch and total-etch. Adhese Universal is available in the unique VivaPen® delivery for fast and convenient direct intra-oral application with minimal waste to optimize cost-effectiveness.



Indications:

- Direct-placed light-curing composite and compomer restorations
- Direct-placed core build-ups with light-, self- and dual-curing composites
- Adhesive cementation of indirect restorations with light- and dual-curing luting composites
- Repairs of fractured composite and compomer restorations
- Desensitization of hypersensitive cervical areas
- Sealing of prepared tooth surfaces before temporary/permanent cementation of indirect restorations

Advantages:

Esthetics

- Universally suitable for direct and indirect bonding procedures and all etching protocols

Quality

- High bond strength (> 25 MPa) on wet and dry dentin
- Minimal risk of postoperative sensitivity due to the integrated desensitizing effect

Efficiency

- Fast and convenient direct intraoral application with the ergonomic VivaPen
- Efficient VivaPen Delivery forms provides almost 3 times more applications per ml compared to conventional bottles*
- Curing time of only 3 seconds with the 3s PowerCure system: for restorations in the posterior region of permanent dentition (Class I and II) when light-cured from the occlusal aspect

* Data available on request

Delivery forms

VivaPen®

Refill	1 x 2 ml	665156
Refill	3 x 2 ml	664505
System Kit	1 x 2 ml	664504
Starter Kit	1 x 0.5 ml	663717
Refill VivaPen® snap-on cannulas	100x	627178
Refill VivaPen® snap-on cannulas	300x	627161
Refill VivaPen® protective sleeves	300x	627492

Bottle

Refill	1 x 5 g	663720
Refill	2 x 5 g	663721
Refill Vivadent applicators (green)	50x	664698
Refill Vivadent applicators (black)	50x	695128

ExcITE® F

ExcITE® F is a light-curing, fluoride-releasing single-component adhesive that is suitable for the total-etch technique.



Indications:

- Direct light- and dual-cure composite and compomer restorations
- Adhesive luting of indirect restorations involving light-curing

Advantages:

- Convenient and economical application with the VivaPen®
- Also available in bottles and single dose vessels
- High adhesion values on enamel and dentin
- Acetone-free (alcohol-based solvent)
- Fluoride release
- Reduced post-operative sensitivity
- Storage at room temperature

Delivery forms

Intro Pack VivaPen®		627177
ExcITE F VivaPen	1 x 2 ml	
Total Etch Etching Gel	1 x 2 g	
var. accessories		
Refill VivaPen, var. accessories	1 x 2 ml	613724
Refill VivaPen snap-on cannulas	100x	627178
Refill VivaPen snap-on cannulas	300x	627161
Refill VivaPen protective sleeves	300x	627492
Refill Bottle	1 x 5 g	630375
Refill Bottle	2 x 5 g	630376
Refill regular applicators (light blue)	50x	631699
Refill Single Dose	50 x 0.1 g	630377

ExcITE® F DSC

ExcITE® F DSC is a dual-cure, fluoride-releasing enamel and dentin adhesive that is suitable for the total-etch technique.



Indications:

- Adhesive cementation of root posts
- Adhesive cementation of indirect, metal-free translucent restorations with dual- or self-curing luting composites
- Direct restorations and core build-ups with dual- or self-curing composites

Advantages:

- Patented initiator-coated applicator brush
- Time-saving: one step, one coat
- No light-curing necessary
- High bonding values on enamel and dentin
- Single-dose presentation with applicators in two different sizes: Regular and Small / Endo
- Storage at room temperature

Delivery forms

Refill		
Regular	50 x 0.1 g	630378
Small/Endo	50 x 0.1 g	630380

Syntac®

Syntac® is the classic adhesive system for a chemically sound bond between the composite materials and the tooth structure.



Indications:

- Direct composite and compomer restorations in the anterior and posterior region
- Adhesive cementation of indirect restorations made of composite or ceramic

Advantages:

- For direct and indirect restorations
- Clinically proven for many years
- Reduction of post-operative sensitivity
- Excellent instant bond between dentin/enamel and composite
- High bond strength
- Storage at room temperature

Delivery forms

Assortment	2 x 3 g / 1x 6 g	532891
Syntac Primer, Syntac Adhesive, Heliobond, var. accessories		
Refill Primer	1 x 3 g	532893
Refill Adhesive	1 x 3 g	532892

Heliobond

Heliobond is a light-curing single-component bonding agent to optimize enamel etching with all light-curing restorative materials.



Indications:

- Adhesive for enamel bonding
- Together with Syntac also dentin bonding agent
- Cementation of tooth jewellery
- Transparent sealing of fissures and restorations
- As a bonding layer for the repair of composite, crown and bridge restorations

Advantages:

- For an optimum marginal seal between tooth and composite. Applied in conjunction with the enamel-etch technique
- Storage at room temperature

Delivery forms

Refill	1 x 11 g	532906
Refill	1 x 6 g	532907

Total Etch

Total Etch is a 37% phosphoric acid gel.



Indications:

- Partial etching technique for adhesive restorations
- Total-etch technique for adhesive restorations
- Fissure sealings
- Cementation of brackets and tooth jewellery
- Adhesive cementation

Advantages:

- The conventional etching gel with balanced handling properties
- Strong contrast to the tooth
- Pre-bent metal cannulas for accurate application
- Jumbo Delivery forms to keep adequate amounts of gel in stock

Delivery forms

Assortment Total Etch Jumbo	1 x 30 g / 2 x 2 g	558530
Jumbo syringe application tips, empty 2-ml syringe		
Refill	2 x 2 g	550588
Etch Refill application tips (blue)	1 x 20	550587

Email Preparator blue

37% phosphoric acid in a liquid Delivery forms.



Indications:

- Enamel etching and dentin conditioning for sealants, composite restorations, and for the adhesive cementation of restorations.

Advantages:

- Micro-interlocking of Heliobond bonding agent with the etched enamel
- The material flows well into the fissures due to the low viscosity
- Reliable retention of the sealant, composite, and the seated restoration

Delivery forms

Refill	1 x 6 g	533034
---------------	----------------	---------------

Amalcap® Plus

Non-gamma-2 silver amalgam alloy with spherical / irregular particles in self-activating capsules.

The alloy is composed of: Ag 70.1%, Sn 18.0%, Cu 11.9%



Indications:

- For restorations of molars and premolars

Advantages:

- High-silver amalgam without gamma-2-phase
- High corrosion resistance and edge strength
- Self-activating system with automatic activation during mixing in the Silamat.
Two working times:
~ 3 min = fast
~ 4 min = regular

Delivery forms

Refill	50 units
Regular size 1	532287
Regular size 2	532288
Regular size 3	532289
Fast size 1	532281
Fast size 2	532282
Fast size 3	532283

Vivacap®

Non-gamma-2 silver amalgam alloy with spherical / irregular particles in self-activating capsules.

The alloy is composed of: Ag 46.5%, Sn 30%, Cu 23.5%



Indications:

- For restorations of molars and premolars

Advantages:

- High-resistance amalgam restorations without gamma-2-phase
- Good carving and modelling properties
- Carving time of approx. 4 minutes
- Durable restorations with glossy surfaces
- Tight marginal seal
- Slight setting expansion enhances marginal adaptation

Delivery forms

Refill	50 units
Size 1	532321
Size 2	532322
Size 3	532323

All you need for restorations in a single visit

The coordinated products out of one hand cover an extensive range of indications and offer all that is needed for treatment in a single visit. The benefits: durable, esthetic and accurate restorations paired with efficient and time-saving workflows.

Telio[®] CAD

NEW

Tetric[®] CAD

POLISHING



IPS e.max[®] Shade Navigation App is the intelligent app which assists you in finding the most suitable Ivoclar Vivadent blocks. Just 5 clicks to find the right solution – for an optimum shade match.



CNS: The Cementation Navigation System, the popular multimedia application, offers dentists practical orientation and guidance in the selection of the best luting material for each case.

PREPARATION



RESTORATION AND COMPLETION



IPS e.max[®] CAD

Lithium disilicate glass-ceramics (LS₂)
For: Crowns, bridges, inlays, onlays, veneers, partial crowns and implant-supported hybrid restorations
Strength: 530 MPa¹

FIRING

NEW

IPS e.max[®] ZirCAD

Zirconium oxide ceramics (ZrO₂)
For: Crowns and bridges
Strength: MT Multi 850 MPa²
LT 1,200 MPa²

SINGLE-VISIT TREATMENT

Cross-linked PMMA material
For: Temporary crowns, bridges and hybrid abutment crowns
Strength: 135 MPa²

Composite
For: Inlays, onlays, veneers and crowns
Strength: 272 MPa²

Leucite glass-ceramics
For: Inlays, onlays, veneers and crowns
Strength: 185 MPa¹

IPS Empress[®] CAD

CEMENTATION



CARE



¹ Average biaxial flexural strength, over a period of 10 years

² Typical mean value of biaxial flexural strength

R&D Ivoclar Vivadent, Schaan, Liechtenstein

The range of products varies according to the different CAD/CAM systems

IPS e.max®

The reliable and esthetic all-ceramic

Since its introduction more than 10 years ago, IPS e.max® has been enjoying a great deal of popularity among CAD/CAM dentists. IPS e.max is synonymous with innovation, durability, reliability and versatility. It is the most frequently used¹ all-ceramic system.

Both dentists and patients highly appreciate the product, and with good reason: They can depend on the material to produce restorations that will remain intact for many years.

The reliable performance of IPS e.max has been confirmed in various studies.²

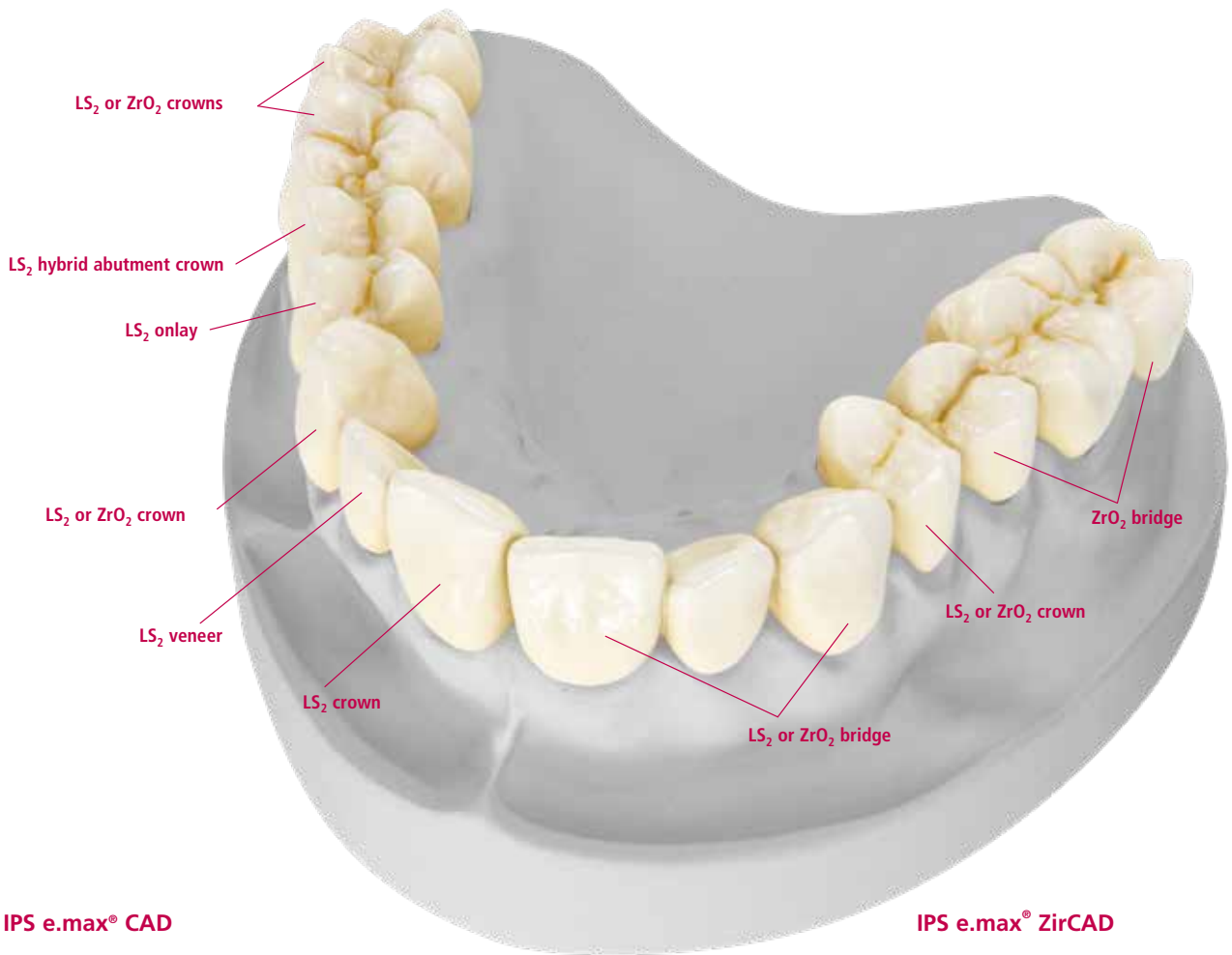
The two types of material – lithium disilicate glass-ceramic (LS₂) and zirconium oxide (ZrO₂) – ideally complement each other and open up a wide spectrum of possibilities in chairside treatments.



IPS e.max®					
IPS e.max® CAD Lithium disilicate glass-ceramics (LS ₂) 530 MPa ³			IPS e.max® ZirCAD Zirconium oxide ceramic (ZrO ₂) MT Multi 850 MPa / LT 1,200 MPa ⁴		
Crowns	Abutment crowns	Three-unit bridges ⁵	Inlays/onlays/veneers	Crowns	Three-unit bridges
IPS e.max® CAD Crystall./Shades/Stains and Glaze					
Variolink® Esthetic			SpeedCEM® Plus		

¹ Based on sales figures
² IPS e.max, Scientific Report, Ivoclar Vivadent AG, Schaan, Liechtenstein, Vol. 03/2001–2017
³ Average biaxial flexural strength, over a period of 10 years, R&D Ivoclar Vivadent, Schaan, Liechtenstein
⁴ Typical mean value of biaxial flexural strength, R&D Ivoclar Vivadent AG, Schaan, Liechtenstein
⁵ Up to the second premolar as the final abutment

Versatile range of indications



IPS e.max® CAD



IPS e.max® ZirCAD





IPS **e.max**®

The
original

All ceramic,
all you need.

ivoclar
vivadent®
passion vision innovation

IPS e.max® CAD

Lithium disilicate glass-ceramics (LS₂)

IPS e.max® CAD is the world's best-selling¹ glass-ceramic. It is suitable for the efficient fabrication of full-contour restorations and is known for its versatile application options, comprehensive range of indications and for its high strength of 530 MPa².

Both its esthetic properties and durability have been confirmed by everyday clinical practice.

Processing options:

"Blue" restorations can either be:

- polished and then crystallized,
- glazed and crystallized in a single step,
- stained, glazed and crystallized in a single step.

Indications:

- Minimally invasive crowns (1 mm)³
- Crowns
- Three-unit bridges (up to the second premolar as the terminal abutment)
- Implant-supported hybrid restorations (hybrid abutments⁴, hybrid abutment crowns)
- Veneers, thin veneers (0.4 mm) and occlusal veneers
- Inlays, onlays, partial crowns

Advantages:

- Excellent esthetics and high strength of 530 MPa², efficiently created in the dental practice
- Full range of indications for your chairside CAD/CAM system
- Adhesive, self-adhesive and conventional cementation options, depending on the indication
- Clinical long-term success and scientifically documented results

¹ Based on sales figures

² Mean biaxial flexural strength over a period of 10 years IPS e.max CAD, R&D Ivoclar Vivadent AG, Schaan, Liechtenstein

³ On the basis of long-term clinical evidence and the material's high strength, the fabrication of crowns with a minimum thickness of 1 mm is allowed if an adhesive cementation technique is used.

⁴ The range of products varies according to the different CAD/CAM systems

⁵ For the IPS e.max CAD-on technique on zirconia frameworks

Block sizes⁴:

- 6 (I 12, C 14, C 16, B 32, B 40⁵ and B 40L⁵) and two sizes for abutment blocks (A 14, A 16)

Translucency levels⁴:

- Four translucency levels and two Impulse blocks (HT – High Translucency, MT – Medium Translucency, LT – Low Translucency, MO – Medium Opacity)

Shades⁴:

- Comprehensive range of shades: in A–D and BL shades (the range of shades varies depending on the translucency level) see page 40/43.

Delivery forms

IPS e.max® CAD for CEREC® Basic Kit

626375

IPS e.max CAD for CEREC and inLab blocks C14, shades: LT A1, LT A2	2 x 5 blocks each
IPS e.max CAD for CEREC and inLab blocks C14, shades: HT A1, HT A2	2 x 5 blocks each
IPS e.max CAD Crystall./Shade, shades: 1, 2, I1, I2	4 x 3 g
IPS e.max CAD Crystall./Stains, shades: white, sunset, khaki, mahogany	4 x 1 g
IPS e.max CAD Crystall./Glaze Paste	1 x 3 g
IPS e.max CAD Crystall./Glaze Spray	1 x 120 ml (270 ml)
IPS e.max CAD Crystall./Glaze Liquid	1 x 15 ml
IPS e.max CAD Crystall./Add-On	1 x 5 g
IPS e.max CAD Crystall./Add-On Liquid	1 x 15 ml
Virtual CADbite	1 x 50 ml
IPS e.max CAD Crystallization Tray	1x
IPS Object Fix Flow	1 x 10 ml
IPS Object Fix Putty	1 x 10 g
Multilink Automix	1 x 5 ml
Multilink Primer A/B	1 x 3 g
Monobond Plus	1 x 5 g
IPS Ceramic Etching Gel Kit	1x
var. accessories	

Refill IPS e.max® CAD blocks

see p. 40–43



Blocks for CEREC® Refills

IPS
Lithium d

Shades

BL1	BL2	BL3	BL4	A1	A2	A3	A3,5	A4	B1	B2	B3	B4	C
-----	-----	-----	-----	----	----	----	------	----	----	----	----	----	---

Translucency level



Given their high translucency that is similar to that of natural enamel, HT blocks are ideal for the fabrication of small restorations (e.g. inlays, onlays). Restorations must convince users with their true-to-nature chameleon effect and the exceptional adaption to the remaining tooth structure.

Size	Contents
I 12	1 x 5 each
C 14	1 x 5 each
B 40	1 x 3 each
B 40L	1 x 3 each
	1x

626423	626424	626425	626426	626391	626392	626393	626394	626395	626396	626397	626398	626399	626400
626427	626428	626429	626430	626407	626408	626409	626410	626411	626412	626413	626414	626415	626416
	634603			634586	634587	634588	634589		634591	634592			634593
	648957			648870	648871	648942	648943		648945	648946			648947
Shade guide* (autoclavable) 613998													

Translucency level



C 14	1 x 5 each
	1x

MT blocks demonstrate medium translucency and are used for restorations that require more brightness than HT restorations and more translucency than LT restorations.

	680032	680033	680034	680028	680029	680030			680031				
Shade guide* (autoclavable) 680311													

Translucency level



I 12	1 x 5 each
C 14	1 x 5 each
C 16	1 x 5 each
A 14 (S)	1 x 5 each
A 14 (L)	1 x 5 each
A 16 (S)	1 x 5 each
A 16 (L)	1 x 5 each
B 32	1 x 3 each
	1x

Given their low translucency that is similar to that of natural dentin, LT blocks are ideal for the fabrication of larger restorations (e.g. posterior crowns). Restorations must convince users with their lifelike brightness value and chroma. This prevents the incorporated restorations from greying.

605338	605339	605340	605341	605318	605319	605320	605321	626377	605322	605323	605324	626378	626379
605343	605344	605345	605346	605328	605329	605330	605331	626384	605332	605333	605334	626385	626386
	648221			648188	648189	648190	648191		648193	648194			648195
	678882			678784	678785	678866	678867		678868	678869			678870
	678883			678873	678874	678875	678876		678877	678878			678879
	645595			644367	644368	644369	644370		644372	644373			644374
	645599			644383	644385	644386	644387		644389	644390			644391
	648225			648204	648205	648206	648207		648209	648210			648211
Shade guide* (autoclavable) 605523													

Translucency level



C 14	1 x 5 each
A 14 (S)	1 x 5 each
A 14 (L)	1 x 5 each
	1x

Given their opacity, MO blocks are ideally suitable for the fabrication of frameworks on slightly discoloured preparations.

0	1	2
596797	596798	596799
644357	644358	644359
644362	644363	644364
Shade guide (autoclavable) 597067		

Translucency level



C 14	1 x 5 each
	1x

The Impulse blocks enable the fabrication of restorations with pronounced opalescent properties. The opalescent blocks are available in two versions with different opalescent values (Opal 1, Opal 2). The blocks are suitable for veneers in light tooth shades, for which an opalescent effect is needed.

O1 (Opal)
637793
Shade guide (autoclavable) 597067

Abbreviation: I = inlay, C = crown, B = bridge, A = abutment, (S) and (L) = interface size

¹ For the IPS e.max CAD-on technique on zirconia frameworks

² Only up to the second premolar as the distal abutment

³ Up to the second premolar

⁴ Shade guide for IPS e.max CAD/IPS e.max Press

CEREC®, inLab® and PlanMill® are not registered trademarks of Ivoclar Vivadent AG.

e.max® CAD

Disilicate glass-ceramics (LS₂)

							Indications									
C1	C2	C3	C4	D2	D3	D4	Occlusal veneers	Thin veneers	Veneers	Inlays, onlays	Partial crowns	Crowns	3-unit bridges	Multi-unit bridges	Hybrid abutments	Hybrid abutment crowns

HT (High Translucency)

made of HT blocks

626400	626401	626402	626403	626404	626405	626406											
626416	626417	626418	626419	626420	626421	626422	✓	✓	✓	✓	✓	✓ ¹	✓ ¹	✓ ¹			
634595	634596			634599													
648949	648950			648953													



MT (Medium Translucency)

made of MT blocks

							✓	✓	✓		✓	✓					
--	--	--	--	--	--	--	---	---	---	--	---	---	--	--	--	--	--



LT (Low Translucency)

made from LT blocks

626379	605325	626380	626381	626382	605326	626383											
626386	605335	626387	626388	626389	605336	626390											
648197	648198			648201													
678870	678871			678872													
678879	678880			678881				✓		✓	✓	✓ ²			✓		✓
644376	644377			644380													
644393	644394			644397													
648213	648214			648217													



MO (Medium Opacity)

3		4																
596800		596801																
644360		644361																
644365		644366																



Impulse

made of Impulse

O2 (Opal)																		
637794		✓	✓	✓														



Blocks for PlanMill®
Refills

IPS e.max
Lithium disilicate

Shades

BL1	BL2	BL3	BL4	A1	A2	A3	A3,5	A4	B1	B2	B3	B4	C
-----	-----	-----	-----	----	----	----	------	----	----	----	----	----	---

Translucency level



HT

Given their high translucency that is similar to that of natural enamel, HT blocks are ideal for the fabrication of small restorations (e.g. inlays, onlays). Restorations made with HT blocks convince users with their true-to-nature chameleon effect and the exceptional adaption to the remaining tooth structure.

Size	Contents
I 12	1 x 5 each
C 14	1 x 5 each
	1x

665880	665881	665882	665883	665848	665849	665850	665851	665852	665853	665854	665855	665856	665857
665884	665885	665886	665887	665864	665865	665866	665867	665868	665869	665870	665871	665872	665873
Shade guide ² (autoclavable) 613998													

Translucency level



MT

MT blocks demonstrate medium translucency and are used for restorations that require more brightness than HT restorations and more translucency than LT restorations.

C 14	1 x 5 each
	1x

	680039	680040	680041	680035	680036	680037			680038				
Shade guide ² (autoclavable) 680311													

Translucency level



LT

Given their low translucency that is similar to that of natural dentin, LT blocks are ideal for the fabrication of larger restorations (e.g. posterior crowns). Restorations made with LT blocks convince users with their lifelike brightness value and chroma. This prevents the incorporated restorations from greying.

I 12	1 x 5 each
C 14	1 x 5 each
C 16	1 x 5 each
A 14 (SD)	1 x 5 each
A 14 (MD)	1 x 5 each
A 16 (SD)	1 x 5 each
A 16 (MD)	1 x 5 each
B 32	1 x 3 each
	1x

665832	665833	665834	665835	665768	665769	665770	665771	665772	665773	665774	665775	665776	665777
665836	665837	665838	665839	665784	665785	665786	665787	665788	665789	665790	665791	665792	665793
	665841			665800	665801	665802	665803		665805	665806			665807
	686003			686004	686005	686006	686007		686008	686009			686010
	686013			686014	686015	686016	686017		686018	686019			686020
	686023			686024	686025	686026	686027		686028	686029			686030
	686033			686034	686035	686036	686037		686038	686039			686040
	665845			665816	665817	665818	665819		665821	665822			665823
Shade guide ² (autoclavable) 605523													

Translucency level



The Impulse blocks enable the fabrication of restorations with pronounced opalescent properties. The opalescent blocks are available in two versions with different opalescent values (Opal 1, Opal 2). The blocks are suitable for veneers in light tooth shades, for which an opalescent effect is needed.

C 14	1 x 5 each
	1x

O1 (Opal)													
665763													
Shade guide (autoclavable) 597067													

Abbreviation: I = inlay, C = crown, B = bridge, A = abutment, (S) and (L) = interface size

¹ Only up to the second premolar as the distal abutment

² Shade guide for IPS e.max CAD/IPS e.max Press

max® CAD

ate glass-ceramics (LS₂)

							Indications							
C1	C2	C3	C4	D2	D3	D4	Occlusal veneers	Thin veneers	Veneers	Inlays, onlays	Partial crowns	Crowns	3-unit bridges	Hybrid abutment crowns

(High Translucency)

made of HT blocks

665857	665858	665859	665860	665861	665862	665863	<input checked="" type="checkbox"/>	<input checked="" type="checkbox"/>	<input checked="" type="checkbox"/>	<input checked="" type="checkbox"/>	<input checked="" type="checkbox"/>				
665873	665874	665875	665876	665877	665878	665879	<input checked="" type="checkbox"/>	<input checked="" type="checkbox"/>	<input checked="" type="checkbox"/>	<input checked="" type="checkbox"/>	<input checked="" type="checkbox"/>				



(Medium Translucency)

ions.

							<input checked="" type="checkbox"/>	<input checked="" type="checkbox"/>	<input checked="" type="checkbox"/>		<input checked="" type="checkbox"/>	<input checked="" type="checkbox"/>			
--	--	--	--	--	--	--	-------------------------------------	-------------------------------------	-------------------------------------	--	-------------------------------------	-------------------------------------	--	--	--



(Low Translucency)

made from LT blocks

665777	665778	665779	665780	665781	665782	665783									
665793	665794	665795	665796	665797	665798	665799									
665809	665810			665813											
665810	686011			686012											
665820	686021			686022				<input checked="" type="checkbox"/>		<input checked="" type="checkbox"/>	<input checked="" type="checkbox"/>	<input checked="" type="checkbox"/>	<input checked="" type="checkbox"/>	<input checked="" type="checkbox"/>	<input checked="" type="checkbox"/>
665830	686031			686032											
665840	686041			686042											
665825	665826			665829											



Impulse

opalescence

O2 (Opal)							<input checked="" type="checkbox"/>	<input checked="" type="checkbox"/>	<input checked="" type="checkbox"/>						
665764							<input checked="" type="checkbox"/>	<input checked="" type="checkbox"/>	<input checked="" type="checkbox"/>						





IPS **e.max**[®]

ZirCAD MT Multi

The multiple raw material product for a genuine, natural gradation of translucency

- Life-like esthetics combined with high strength (850 MPa¹)
- Fluorescent effect with IPS e.max[®] CAD Crystall./Glaze Paste Fluo
- Maximum flexibility: adhesive, self-adhesive or conventional cementation

All ceramic,
all you need.

¹Typical mean value of flexural strength, IPS e.max ZirCAD, R&D Ivoclar Vivadent AG, Schaan, Liechtenstein

IPS e.max® ZirCAD

Zirconium oxide ceramic (ZrO₂)

IPS e.max® ZirCAD empowers dental professionals to create and complete esthetic monolithic zirconium oxide restorations efficiently in the dental office using a speed sintering procedure.

Two groups of materials combined into one – this is what makes IPS e.max ZirCAD MT Multi special: the 5Y-TZP zirconium oxide is translucent and imparts high levels of translucency to the incisal area, while the more opaque 4Y-TZP zirconium oxide lends high strength to the dentin area¹.

In addition, the material features a specially designed gradual progression of shade and translucency, consisting of 60% dentin, 20% transition and 20% incisal zone. This distribution reflects the natural progression from dentin to incisal and imparts natural esthetic characteristics to the restorations, even without characterization.

Processing options:

Once sintered, the restorations can either be:

- glazed and fired,
- stained (optional), glazed and fired,
- polished.

Indications:

- Crowns
- Three-unit bridges

Advantages:

- Chairside zirconium oxide restorations allow practices to expand their portfolio of offerings
- Pleasing esthetics combined with high strength
- Tooth structure preserving preparation
- Natural fluorescence with IPS e.max CAD Crystall./Glaze Fluo paste
- Versatile cementation options: conventional, adhesive or self-adhesive

Block sizes:

- 2 (C 17 and B45)

Translucency levels:

- One translucency level and one Multi block (MT Multi – Medium Translucency, LT – Low Translucency)

Shades:

- 8 (BL or BL1, A1, A2, A3, B1, B2, C2, D2)

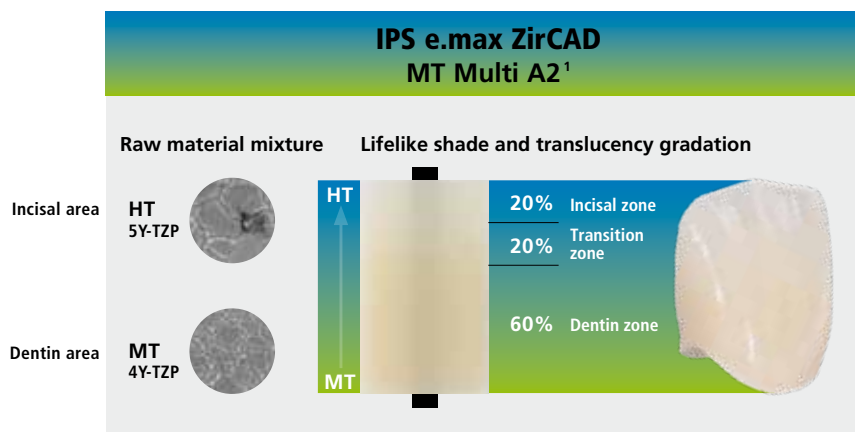
Delivery forms

IPS e.max® ZirCAD for CEREC®/inLab® Starter Kit MT Multi	694514
IPS e.max® ZirCAD for CEREC®/inLab® Starter Kit LT	686282
IPS e.max® ZirCAD for PlanMill® Starter Kit MT Multi	694516
IPS e.max® ZirCAD for PlanMill® Starter Kit LT	686283

Block C14, shades: A1, A2, A3	2 blocks each
Block B45, shade: A2	1 block
IPS e.max CAD Crystall./Glaze Paste Fluo	1 x 3 g
Ivoclean	1 x 5 g
SpeedCEM Plus	1 x 9 g
OptraGate Small	1x
OptraGate Regular	1x
var. accessories	

Refill IPS e.max® ZirCAD blocks

see p. 48



- Two different raw powders
- Realistic progression of translucency from dentin to incisal



¹ Typical mean value of the biaxial flexural strength: IPS e.max ZirCAD LT 1,200 MPa, MT Multi 850 MPa, R&D Ivoclar Vivadent AG, Schaan, Liechtenstein

Refills

IPS e.max® ZirCAD
Zirconium oxide ceramic (ZrO₂)

Shades								Indications	
BL or BL1 ²	A1	A2	A3	B1	B2	C2	D2	Crowns	3-unit bridges

Blocks for CEREC®

Translucency level



Size	Contents
C 17	1 x 5 each
B 45	1 x 3 each

MT Multi (MT Multi – Medium Translucency)

Gradation of shade and translucency from the dentin to the incisal region – ideal for crowns and bridges

694517	694521	694522	694523	694526	694527	694531	694534	✓	✓
694537	694541	694542	694543	694546	694547	694551	694554		



Translucency level



Size	Contents
C 17	1 x 5 each
B 45	1 x 3 each

LT (Low Translucency)

LT blocks are ideal for posterior crowns and bridges due to their low translucency

686192	686193	686194	686195	686196	686197	686198	686199	✓	✓
686200	686201	686202	686203	686204	686205	686206	686207		



Blocks for PlanMill®

Translucency level



Size	Contents
C 17	1 x 5 each
B 45	1 x 3 each

MT Multi (MT Multi – Medium Translucency)

Gradation of shade and translucency from the dentin to the incisal region – ideal for crowns and bridges

694597	694601	694602	694603	694606	694607	694611	694614	✓	✓
694617	694621	694622	694623	694626	694627	694631	694634		



Translucency level



Size	Contents
C 17	1 x 5 each
B 45	1 x 3 each

LT (Low Translucency)

LT blocks are ideal for posterior crowns and bridges due to their low translucency

686216	686217	686218	686219	686220	686221	686222	686223	✓	✓
686224	686225	686226	686227	686228	686229	686230	686231		



IPS e.max ZirCAD is also available in an MO version (Medium Opacity) for crown frameworks and three- to multi-unit bridge frameworks with max. two pontics.

Abbreviation: C = crown, B = bridge

² MT Multi blocks are available in shade BL1, LT blocks in shade BL.

IPS Empress® CAD

Leucite glass-ceramics

IPS Empress® CAD is associated with more than 20 years of successful clinical performance. It closely reproduces the natural tooth structure due to its distinct chameleon effect and natural fluorescence.

IPS Empress CAD is known for the highest levels of esthetics and can be easily polished to a high gloss. Grind – polish – done.

A special highlight is the innovative polychromatic IPS Empress CAD Multi block. This block is distinguished by a lifelike transition of shade and fluorescence from dentin to incisal.

Processing options:

Once ground, restorations can either be:

- polished,
- stained (optional) – glazed.

Indications:

- Crowns
- Inlays, onlays
- Veneers

Advantages:

- Highly esthetic restorations, efficiently created
- Clinically proven ceramic material with a flexural strength of 185 MPa*
- Optimum adjustment to the natural tooth structure due to the chameleon effect

Block sizes:

- 4 (I10, I12, C14, C14L)

Translucency levels:

- 2 and Multi block (HT – High Translucency, LT – Low Translucency)

Shades:

- Comprehensive range of shades: in A–D and BL shades (the range of shades varies depending on the translucency level and block size), see page 50

Delivery forms

Refill IPS Empress® CAD blocks	1 x 5 blocks	see p. 50
--------------------------------	--------------	-----------

* Mean biaxial flexural strength over a period of 10 years IPS e.max CAD, R&D Ivoclar Vivadent AG, Schaan, Liechtenstein



Refills

IPS Empress® CAD
Leucite glass-ceramics

Shades										
BL1	BL2	BL3	BL4	A1	A2	A3	A3,5	B1	B2	B3

Blocks for CEREC®

Translucency level

Multi

Size	Contents
I 12	1 x 5 each
C 14	1 x 5 each
C 14 L	1 x 5 each

True-to-nature transition of shade, translucency, and fluorescence

607681		607682		602592	602593	602594	602595	602596		
607683		607684		602598	602599	602600	602601	602602		
607672		607673		602604	602605	602606	602607	602608		

Translucency level

HT (High Translucency)

I 10	1 x 5 each
I 12	1 x 5 each

Higher translucency and chameleon effect, lower brightness

				602510	602511	602512	602513	602514	602515	602516
				602520	602521	602522	602523	602524	602525	602526

Translucency level

LT (Low Translucency)

I 12	1 x 5 each
C 14	1 x 5 each
	1x

Lower translucency and chameleon effect, higher brightness

602582	602583	602584	602585	602557	602558	602559	602560	602561	602562	602563
602587	602588	602589	602590	602567	602568	602569	602570	602571	602572	602573

Shade guide HT/LT (autoclavable) 603418

Blocks for PlanMill®

Translucency level

Multi

Size	Contents
I 12	1 x 5 each
C 14	1 x 5 each
C 14 L	1 x 5 each

True-to-nature transition of shade, translucency, and fluorescence

665755		665756		665740	665741	665742	665743	665744		
665757		665758		665745	665746	665747	665748	665749		
665759		665760		665750	665751	665752	665753	665754		

Translucency level

HT (High Translucency)

I 10	1 x 5 each
I 12	1 x 5 each

Higher translucency and chameleon effect, lower brightness

				665678	665679	665680	665681	665682	665683	665684
				665689	665690	665691	665692	665693	665694	665695

Translucency level

LT (Low Translucency)

I 12	1 x 5 each
C 14	1 x 5 each
	1x

Lower translucency and chameleon effect, higher brightness

665732	665733	665734	665735	665710	665711	665712	665713	665714	665715	665716
665736	665737	665738	665739	665719	665720	665721	665722	665723	665724	665725

Shade guide HT/LT (autoclavable) 603418

Abbreviation: I = inlay, C = crown



		Indications			
C2	D3	Veneers	Inlays, onlays	Partial crowns	Crowns



		✓		✓	✓
--	--	---	--	---	---



602517	602518	✓	✓		
602527	602528				



602564	602565	✓		✓	✓
602574	602575				



		✓		✓	✓
--	--	---	--	---	---



665685	665686	✓	✓		
665696	665697				



665717	665718	✓		✓	✓
665726	665727				



Tetric® CAD

The esthetic composite block

The efficient way to **create esthetic restorations**

- Unique chameleon effect
- Excellent polishability and intra-oral reparability
- Reliable bond due to a well-matched luting system

Efficient
Esthetics



Isolate



Bond



Restore



Polish

ivoclar
vivadent®
passion vision innovation

Tetric® CAD

Composite

Tetric® CAD is an esthetic composite block (flexural strength: 272 MPa*) for the efficient fabrication of single-tooth restorations.

Due to the pronounced chameleon effect, Tetric CAD restorations blend in well with the residual tooth structure.

Restorations are ground, polished and then seated using an adhesive cementation technique. This processing procedure is very efficient, leading to esthetic results quickly and easily.

Processing options:

Once ground, restorations can be:

- polished
- characterized (optional).

Indications:

- Veneers
- Inlays
- Onlays (e.g. partial crowns, occlusal veneers)
- Crowns

Advantages:

- Lifelike integration into the oral environment due to the unique chameleon effect
- Excellent polishability and intraoral repairability
- Easy and efficient processing
- Stability even in restorations with limited layer thicknesses, thinly tapered margins are possible without chipping
- Reliable adhesive bond due to a coordinated system of cementation materials

Block sizes:

- 2 (I12, C14)

Translucency levels:

- 2 (HT – High Translucency, MT – Medium Translucency)

Shades:

- 5 (BL, A1, A2, A3, A3.5; the range of shades varies depending on the translucency level)

Delivery forms

Tetric® CAD for CEREC®/inLab® Starter Kit	692157
Tetric® CAD for PlanMill® Starter Kit	692176
HT block I12, shades: A1, A2, A3	2 blocks each
MT block C14, shades: A1, A2, A3	1 block
Variolink Esthetic DC, neutral	1 x 2.5 g
Adhese Universal VivaPen	1 x 0.5 ml
OpraPol Test Pack	1x
var. accessories	

Refill Tetric® CAD blocks

see p. 52

* Typical mean value of the biaxial flexural strength, R&D Ivoclar Vivadent AG, Schaan, Liechtenstein



Refills

Tetric® CAD Composite									
Shades					Indications				
BL	A1	A2	A3	A3,5	Veneers	Inlays, onlays (e.g. partial crowns, occlusal veneers)	Crowns		

Blocks for CEREC®

Translucency level		HT (High Translucency)									
Size		Contents		Higher translucency and chameleon effect, lower brightness							
I 12	1 x 5 each		692139	692140	692141	692142	✓	✓			
C 14	1 x 5 each		692148	692149	692150	692151					



Translucency level		MT (Medium Translucency)									
Size		Contents		Lower translucency and chameleon effect, higher brightness							
I 12	1 x 5 each	692147	692143	692144	692145	692146	✓		✓		
C 14	1 x 5 each	692156	692152	692153	692154	692155					



Blocks for PlanMill®

Translucency level		HT (High Translucency)									
Size		Contents		Higher translucency and chameleon effect, lower brightness							
I 12	1 x 5 each		692158	692159	692160	692161	✓	✓			
C 14	1 x 5 each		692167	692168	692169	692170					
Translucency level		MT (Medium Translucency)									
Size		Contents		Lower translucency and chameleon effect, higher brightness							
I 12	1 x 5 each	692166	692162	692163	692164	692165	✓		✓		
C 14	1 x 5 each	692175	692171	692172	692173	692174					



Abbreviation: I = inlay, C = crown

Telio® CAD

Cross-linked PMMA material

Telio® CAD are cross-linked PMMA blocks for the efficient fabrication of long-term temporaries.

As a result of an optimized manufacturing process, the restorations feature a smooth surface that can be quickly and efficiently polished.

Processing options:

- Once milled, restorations are:
- polished
 - characterized (optional).

Indications:

- Temporary crowns
- Temporary bridges with up to two connected pontics
- Implant-supported temporary hybrid abutment crowns

Advantages:

- High material homogeneity and process reliability reduce mixing errors and air entrapments compared with conventional methods
- Shade stability and lifelike fluorescence
- Excellent polishability
- Economical fabrication of temporaries

Block sizes:

- 3 (A 16, B 40 L, B 55)

Translucency level:

- 1 (LT – Low Translucency)

Shades:

- 9 (BL3, A1, A2, A3, A3.5, B1, B3, C2, D2)

Delivery forms

Telio® CAD for CEREC® Starter Kit	631697
Telio® CAD for PlanMill® Starter Kit	665636
LT block B 40 L, shade: A1	2 blocks
LT block B 40 L, shades: A2, A3	3 blocks
Telio CS Link Transparent	1 x 6 g
Telio CS Desensitizer	1 x 5 g
OptraPol Test Pack	1x
var. accessories	

Refill Telio® CAD blocks

see p. 54

* Typical mean value of the biaxial flexural strength, R&D Ivoclar Vivadent AG, Schaan, Liechtenstein



Refills

Telio® CAD
Cross-linked PMMA material

Shades									Indications		
BL3	A1	A2	A3	A3.5	B1	B3	C2	D2	Crowns	Temporary bridges*	Temporary hybrid abutment crowns

Blocks for CEREC®

Translucency level

LT (Low Translucency)

Restorations made from LT blocks convince users with their lifelike brightness value and chroma. This prevents the incorporated restorations from greying.

Size	Contents	665518	665519	665520	665521	665522	665523	684501	684502	684503			
A 16 (S)	1 x 3 each												
A 16 (L)	1 x 3 each	665524	665525	665526	665527	665528	665529	684504	684505	684506			✓
B 40 L	1 x 3 each	627718	627719	627720	627721	627722	627723	684489	684490	684491	✓	✓	
B 40 L	1 x 9 each	627726	627727	627728	627729	627730	627731	684492	684493	684494	✓	✓	
B 55	1 x 3 each	627824	627825	627826	627827	627828	627829	684498	684499	684500	✓	✓	



Blocks for PlanMill®

Translucency level

LT (Low Translucency)

Restorations made from LT blocks convince users with their lifelike brightness value and chroma. This prevents the incorporated restorations from greying.

Size	Contents	684340	684341	684342	684363	684364	684365	684366	684367	684368			
A 16 (SD)	1 x 3 each												
A 16 (MD)	1 x 3 each	684369	684370	684371	684372	684373	684374	684375	684376	684377			✓
B 40 L	1 x 3 each	665612	665613	665614	665615	665616	665617	684477	684478	684479	✓	✓	
B 40 L	1 x 9 each	665618	665619	665620	665621	665622	665623	684480	684481	684482	✓	✓	
B 55	1 x 3 each	665606	665607	665608	665609	665610	665611	684486	684487	684488	✓	✓	



* with up to two connected pontics

Abbreviation: B = bridge, A = abutment, (S or SD) and (L or MD) = interface sizes

Abutment Solutions

For customized implant restorations fabricated with CEREC® and inLab®

Digital all around.

*From the temporary to
the final restoration.*



- **Impressive results** in terms of function and esthetics
- **Accurately fitting restorations** due to the digital manufacturing process
- **Stable bond** thanks to Multilink® Hybrid Abutment



ivoclar
vivadent
passion vision innovation

Implant prosthetics

From temporary to permanent restoration

The IPS e.max® CAD and Telio® CAD ranges comprise blocks that come with a pre-fabricated interface for the direct cementation to a titanium base. This allows implant-supported hybrid abutments and hybrid abutment crowns to be created at chairside using clinically proven products.¹

Cementation is achieved with the self-curing Multilink® Hybrid Abutment luting composite.

Indications:

Telio CAD

- implant-supported temporary hybrid abutment crowns

IPS e.max CAD

- implant-supported hybrid restorations (hybrid abutments, hybrid abutment crowns)¹

Advantages:

Telio CAD

- Straightforward design of the emergence profile
- Visualization of the permanent restoration

IPS e.max CAD¹

- Exceptional and long-lasting esthetics due to tooth-coloured hybrid abutments
- Hybrid abutment crown (2-in-1) offers functionality and efficiency
- Excellent biocompatibility with oral soft tissues

¹ varies according to the different CAD/CAM systems

Block sizes:

- Two (A 14 and A 16) and two interface sizes

Translucency level:

- Two (LT – Low Translucency und MO¹ – Medium Opacity)

Shades¹:

- Nine (Telio CAD LT: BL3, A1, A2, A3, A3.5, B1, B3, C2, D2)
- Ten (IPS e.max CAD LT: BL2, A1, A2, A3, A3.5, B1, B2, C1, C2, D2)
- Five (IPS e.max CAD MO: 0, 1, 2, 3, 4)

Delivery forms

Abutment Solutions for CEREC®/inLab® Starter Kit 691203

IPS e.max CAD A 14 (L), shade: MO 1	1 x 5 blocks
IPS e.max CAD A 14 (L), shade: LT A2	1 x 5 blocks
IPS e.max CAD A 16 (L), shade: LT A2	1 x 5 blocks
Telio CAD A 16 (L), shade: LT A2	1 x 3 blocks
Multilink Hybrid Abutment	1 x 9 g
Liquid Strip	1 x 2.5 g
Monobond Etch & Prime	1 x 5 g
SR Connect	1 x 5 ml
Virtual Extra Light Body	1 x 50 ml
var. accessories	

Abutment Solutions for PlanMill® Starter Kit 686730

Viteo Base (ST BL) (MD)	1x
IPS e.max CAD A 14 (MD), shade: LT A2	1 x 5 blocks
IPS e.max CAD A 16 (MD), shade: LT A2	1 x 5 blocks
Telio CAD A 16 (MD), shade: LT A2	1 x 5 blocks
Multilink Hybrid Abutment	1 x 9 g
Liquid Strip	1 x 2.5 g
Monobond Etch & Prime	1 x 5 g
SR Connect	1 x 5 ml
Virtual Extra Light Body	1 x 50 ml
var. accessories	

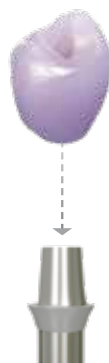
Refill Telio® CAD blocks See p. 54

Refill IPS e.max® CAD blocks See p. 40–43

Hybrid abutment crown



Hybrid abutment crown



Hybrid abutment¹



Multilink® Hybrid Abutment

Multilink® Hybrid Abutment is a self-curing luting composite for the permanent cementation of lithium disilicate (LS₂) glass-ceramic and zirconium oxide ceramic structures on implant sleeves made of titanium/titanium alloy and zirconium oxide.



Indications:

Extraoral cementation of lithium disilicate (LS₂) glass-ceramic and zirconium oxide ceramic structures (abutment and abutment crowns) on implant sleeves made of titanium/titanium alloy and zirconium oxide.

Advantages:

- High bonding strength for a reliable cementation
- High opacity for optimum esthetics
- Easy handling with the practical Automix syringe

Shade:

HO 0

Delivery forms

Multilink® Hybrid Abutment Starter Kit

662810

Multilink Hybrid Abutment syringe HO 0	1 x 2.5 g
Mixing Tips	4 x
Monobond Plus	1 x 1 g
Mixing pad	1x
var. accessories	

Refill

Multilink Hybrid Abutment syringe	1 x 9 g
Mixing tips	15x
var. accessories	
HO 0	647182

Refill Mixing Tips

15x

645951

SR® Connect

SR® Connect is a methyl-methacrylate-based (MMA) liquid for extraoral use.



Indications:

Light-curing conditioner for activating the inner surfaces of restorations made with Telio® CAD Abutment Solutions.

Advantage:

- Establishment of a strong bond between the Telio CAD restoration and the titanium base in conjunction with Multilink Hybrid Abutment

Delivery forms

SR® Connect

1 x 5 ml

642236

Implant Care

Implant restorations require professional care during the different phases of an implant treatment and the required lifelong aftercare.

Implant Care is a coordinated system of products which assist the practice team and its patients in assuring the long-term quality of valuable implant restorations.



Delivery forms

see on p. 104

IPS e.max® CAD Crystall./ Shades/Stains and Glaze

Universal stains and glaze assortment

IPS e.max® CAD Crystall. / Shades / Stains and Glaze is a universal range of stains and glazes designed for IPS e.max® CAD, IPS e.max® ZirCAD and IPS Empress® CAD.

The glaze is available in two versions – with or without fluorescent effect. Minor corrections (e.g. proximal contact areas) can be applied to IPS e.max CAD and IPS e.max ZirCAD restorations using IPS e.max CAD Crystall./Add-On.

Indications:

- IPS e.max CAD
- IPS e.max ZirCAD
- IPS Empress CAD



Advantages:

- Reduced inventory, reduced costs – a single range suitable for all chairside CAD/CAM ceramic materials from Ivoclar Vivadent
- Familiar application and consistent high quality
- Glaze with and without fluorescent effect
- Possibility to apply corrections (e.g. proximal contacts) with Add-On

Shades:

- 7 Shades (0, 1, 2, 3, 4, Incisal 1, Incisal 2)
- 7 Stains (white, cream, sunset, copper, olive, khaki, mahogany)

Delivery forms

IPS e.max® CAD Characterization Kit

688805

IPS e.max CAD Crystall.	
Shades: 1, 2, I1, I2	1 x 3 g each
IPS e.max CAD Crystall./Stains	
Shades: white, sunset, khaki, mahogany	1 x 1 g each
IPS e.max CAD Crystall./Glaze Paste Fluo	1 x 3 g
IPS e.max CAD Crystall./Glaze Spray	1 x 120 ml
IPS e.max CAD Crystall./Glaze Liquid	1 x 15 ml
IPS e.max CAD Crystall./Add-On Incisal	1 x 5 g
IPS e.max CAD Crystall./Add-On Liquid allround	1 x 15 ml
IPS e.max CAD Crystallization Tray	1 x
IPS e.max CAD Speed Crystallization Tray	1 x

IPS e.max® CAD Crystallization Kit

628186

IPS e.max CAD Crystall./Shade,	
Shades: 1, 2, I1	1 x 3 g each
IPS e.max CAD Crystall./Stains,	
Shades: white, sunset, mahogany	1 x 1 g each
IPS e.max CAD Crystall./Glaze Paste	1 x 3 g
IPS e.max CAD Crystall./Glaze Spray	1 x 120 ml
IPS e.max CAD Crystall./Glaze Liquid	1 x 15 ml
IPS e.max CAD Crystall./Add-On Incisal	1 x 5 g
IPS e.max CAD Crystall./Add-On Liquid	1 x 15 ml
IPS e.max CAD Crystallization Tray	1x
IPS Object Fix Flow	1 x 10 ml
IPS Object Fix Putty	1 x 10 g
IPS Ceramic Etching Gel Kit	1x
var. accessories	

Universal Stains and Glaze Assortment IPS e.max® CAD Crystall./

	Contents	Shades						
IPS e.max® CAD Crystall./Shades Dentin stains in paste form	1 x 3 g	 0 605348	 1 605349	 2 605350	 3 605351	 4 605352	 Incisal 1 605353	 Incisal 2 605354
IPS e.max® CAD Crystall./Stains Intensive stains in paste form	1 x 1 g	 white 605356	 cream 605357	 sunset 605358	 copper 605359	 olive 605360	 khaki 605361	 mahogany 605362
IPS e.max® CAD Crystall./Glaze Paste Glaze in paste form	1x 3 g	605363						
IPS e.max® CAD Crystall./Glaze Paste FLUO Glaze paste with fluorescence effect	1x 3 g	674676						
IPS e.max® CAD Crystall./Glaze Liquid	1x 15 ml	605366						
IPS e.max® CAD Crystall./Glaze Spray Glaze in spray form	120 ml	605364						
IPS e.max® CAD Crystall./Add-On for subsequent adjustment (e.g. proximal contacts)	1x 5 g	Incisal 605365	Dentin 635549	Connect¹ 635644				
IPS e.max® CAD Crystall./Add-On Liquid	1x 15 ml	allround 605569	longlife¹ 635550					
IPS Empress® Add-On 770 °C / 1418 °F for subsequent adjustments (e.g. proximal contacts)	1x 2-0 g	564080						
IPS Empress® Esthetic Veneer Build-Up Liquid	1 x 60 ml	579405						

¹ For the IPS e.max CAD-on technique on zirconia frameworks

² Vacuum required

IPS e.max® CAD Lithium disilicate glass-ceramics (LS ₂)	IPS e.max® ZirCAD Zirconium oxide ceramics (ZrO ₂)	IPS Empress® CAD Leucite glass-ceramics
✓	✓	✓
✓	✓	✓
✓	✓	✓
✓ ²	✓ ²	-
-	-	✓ ²



IPS® Object Fix Flow/ IPS® Object Putty

Auxiliary firing pastes with different levels of viscosity to support all-ceramic restorations (particularly IPS e.max® CAD) during firing and crystallization. The pastes are used to stabilize and secure the restorations on the silicon nitride support pins or directly on the silicon nitride firing tray. The pastes are easy to apply and remove after the firing procedure.



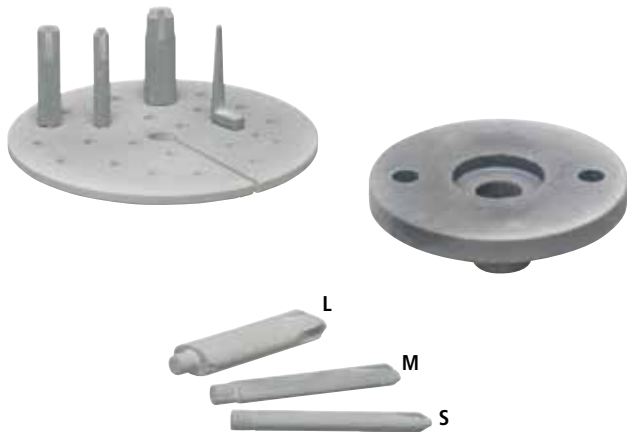
Delivery forms

IPS® Object Fix Flow	1 x 10 ml	605525
IPS® Object Fix Putty	1 x 10 g	605526

IPS e.max® CAD Crystallization Tray

IPS e.max® CAD Crystallization Tray is a firing tray suitable for the crystallization of IPS e.max CAD restorations and IPS e.max CAD Crystall./Stains and Glaze firing of IPS e.max ZirCAD and IPS Empress® CAD restorations.

The IPS e.max CAD Crystallization pins assist users in positioning the restorations on firing tray.



Indications:

- IPS e.max CAD
- IPS e.max ZirCAD
- IPS Empress CAD

Sizes:

- 2

Delivery forms

IPS e.max® CAD Crystallization Tray		605367
IPS e.max CAD Crystallisation Tray	1 x	
IPS e.max CAD Crystallization Pin (sizes: S, M, L)	9 x	
IPS e.max® CAD Speed Crystallization Tray	1x	647633
IPS e.max CAD Speed Crystallization Tray	1 x	
IPS e.max CAD Speed Crystallization Pin (sizes: S, M, L)	3 x	
IPS e.max® CAD Crystallization Pin Refill		
S / M / L	6 x each	605368
XS	3 x	656105

Tweezers

Facilitates handling during the staining and glazing process.



Delivery forms

Tweezers	1x	554069
-----------------	-----------	---------------

IPS® Ceramic Etching Gel

The IPS® Ceramic Etching Gel is used for the creation of retentive bonding surfaces on all-ceramic restorations to prepare for cementation. It enhances the bonding effect between the composite cement and the ceramic bonding surface.



Delivery forms

IPS® Ceramic Etching Gel Kit		531550
IPS Ceramic Etching Gel	1 x 5 ml	
Neutralizing Powder	1 x 30 g	

Refill

IPS Ceramic Etching Gel, red	1 x 5 ml	531548
Neutralizing Powder	1 x 30 g	531549

All-Ceramic Preparation Guide

The three-dimensional preparation guide from Ivoclar Vivadent visualizes the proper preparation of teeth for all-ceramic restorations. The model furthermore shows the minimum preparation requirements and the indications of IPS Empress® and IPS e.max® restorations. The model comes with an illustrated booklet which features the preparation recommendations. The booklet is also available separately.



Delivery forms

All-Ceramic Preparation Guide Edition II (model)	630548
All-Ceramic Recommendations for Preparation (D/E)	631797

IPS e.max® Packaging

The IPS e.max® Material Box and the inserts are the ideal storage place in the dental practice for the various IPS e.max materials.



Delivery forms

IPS e.max® Packaging

IPS e.max Material Box small (55 mm)	1x	597483
IPS e.max Material-Box medium (80 mm)	1x	597484
IPS e.max CAD/ZirCAD Insert (for 6 Refills)	1x	614248

Telio® CS C&B

Self-curing composite material in paste form for the fabrication of temporary restorations.



Indications:

Fabrication of temporary restorations

- Crowns and bridges
- Inlays and onlays
- Core build-ups in combination with temporary posts
- Veneers

Advantages:

- High fracture strength and optimum wear period
- Accuracy of fit and tension-free results
- Protection of the dental pulp and tissues
- Easy handling due to automix double-barrel cartridge

Shades:

Bleach BL3, A1, A2, A3, A3.5

Delivery forms

Telio® CS C&B Starter Kit A2 628244

Telio CS C&B A2	1 x 78 g
Mixing Tips	10 x
Telio CS Link Transparent	1 x 6 g
Mixing Tips	4 x
Telio CS Desensitizer	1 x 5 g
Application Brushes	50 x
var. accessories	

Refill Telio® CS C&B 1 x 78 g

Double-barrel cartridge, 10:1, var. accessories	
Bleach BL3	628249
A1	628245
A2	628246
A3	628247
A3.5	628248

Refill Dispenser 1x 561381

Refill Mixing Tips 50x 628157

Telio® CS Link

Dual-curing, translucent, temporary composite cement for the esthetic and provisional cementation of temporary restorations.

Indications:

Temporary cementation of provisionals

- Crowns and bridges
- Inlays and onlays
- Veneers



Advantages:

- Eugenol-free
- Dual-curing
- High esthetics due to two translucent shades
- Ideal retention behaviour
- Easy handling due to automix double-push syringe

Shades:

A3 and Transparent

Delivery forms

Refill Telio® CS Link	2 x 6 g	
Double-push syringe, 1:1, var. accessories		
A3		627912
Transparent		627914

Refill Mixing Tips	15x	645951
--------------------	-----	--------

Telio® CS C&B Starter Kit A2		628244
------------------------------	--	--------

Telio CS C&B A2	1 x 78 g	
Mixing Tips	10 x	
Telio CS Link Transparent	1 x 6 g	
Mixing Tips	4 x	
Telio CS Desensitizer	1 x 5 g	
Application Brushes	50 x	
var. accessories		

Telio® CS Desensitizer

A clear solution for application onto dentin for reducing and preventing dentinal hypersensitivity and post-operative sensitivity.

Indications:

Prevention and reduction of dentinal hypersensitivity and post-operative sensitivity for the following fields of application:

- Temporary restorations
- Luting / cementation of indirect restorations
- Direct restorative treatment



Advantages:

- Total working time of 10 seconds. No light-curing required
- License for treatment planning and material selection. No interaction with the materials used in the further treatment steps.
- Reduction of dentinal hypersensitivity and post-operative sensitivities
- Cleaning of cut dentin surfaces

Delivery forms

Refill Telio® CS Desensitizer		
Refill Telio CS Desensitizer Bottle	1 x 5 g	627911
Refill Telio CS Desensitizer Single Dose	50 x 0.1 g	627916

Telio® CS C&B Starter Kit A2		628244
------------------------------	--	--------

Telio CS C&B A2	1 x 78 g	
Mixing Tips	10 x	
Telio CS Link Transparent	1 x 6 g	
Mixing Tips	4 x	
Telio CS Desensitizer	1 x 5 g	
Application Brushes	50 x	
var. accessories		

Telio® CS Inlay

Telio® CS Inlay is a light-curing, single-component temporary restorative material.



Indications:

- Deep inlay preparations with parallel walls
- Reversible obturation of screw access holes in implant superstructures
- Relining of prefabricated temporary crowns made of polycarbonate or methacrylate

Advantages:

- Light-curing, single-component material
- Quick and easy application, removal in one piece
- No additional temporary cement or adhesive required
- Bonds to the tooth but does not stick to the instrument
- Demonstrates low polymerization shrinkage
- Seals tooth cavities effectively and shows no discolouration
- Available in two different shades and presentations (syringes and Cavifils)

Shades:

Transparent and Universal

Telio® CS Onlay

Telio® CS Onlay is a light-curing, single-component temporary restorative material.



Indications:

- Wide, shallow cavities with few retentive areas, such as onlay preparations

Advantages:

- Light-curing, single-component material
- Quick and easy application, removal in one piece
- No additional temporary cement or adhesive required
- Bonds to the tooth but does not stick to the instrument
- Demonstrates low polymerization shrinkage
- Seals tooth cavities effectively and shows no discolouration
- Available in two different shades and presentations (syringes and Cavifils)

Shades:

Transparent and Universal

Delivery forms

Refill Telio® CS Inlay Syringe	3 x 2.5 g	
Universal		635332
Transparent		635335

Refill Telio® CS Inlay Cavifil	30 x 0.25 g	
Universal		635333
Transparent		635334

Refill Telio® CS Onlay Syringe	3 x 2.5 g	
Universal		635339
Transparent		635338

Refill Telio® CS Onlay Cavifil	30 x 0.25 g	
Universal		635337
Transparent		635336



THE RIGHT CEMENT

for every clinical situation

The duo for all your cementation needs:

Variolink® Esthetic – The easy way of cementing highly esthetic restorations

SpeedCEM® Plus – The efficient way of cementing zirconium oxide restorations

Recommended for
IPS e.max®



See for yourself:
cementation.ivoclarvivadent.com

ivoclar
vivadent
passion vision innovation

Strong combinations

Cement	Esthetic Luting Composite		Self-adhesive resin cement
	Variolink® Esthetic		SpeedCEM® Plus
	Light-cure ¹	Light-/Dual-cure	Self-curing with light-curing option
Curing Mode			
Cementation Method	Adhesive: Adhese® Universal	Adhesive: Adhese® Universal	Self-adhesive
Glass-Ceramics, e.g. IPS Empress®			
Veneers	✓	✓	
Inlays/Onlays/Partial Crowns	✓	✓	
Crowns		✓	
Lithium Disilicate, e.g. IPS e.max® CAD/Press			
Veneers/Occlusal Veneers	✓	✓	
Inlays/Onlays/Partial Crowns	✓	✓	
Crowns/Bridges		✓	✓ ²
Oxide Ceramics, e.g. IPS e.max® ZirCAD			
Crowns/Bridges			✓
Endodontic Posts			✓
Hybrid Ceramics and Composites, e.g. Tetric® CAD			
Veneers	✓	✓	
Inlays/Onlays	✓	✓	
Crowns		✓	
Endodontic Posts e.g. FRC Postec® Plus			✓
Metal/ Metal-Based			
Inlays/Onlays/Partial Crowns			✓
Crowns/Bridges			✓
Maryland Bridges		✓	
Endodontic Posts			✓

¹ Restorations with a layer thickness of < 2 mm
² Crowns with a material thickness of > 1.5 mm
 ✓ Recommended product combination



Please take note of the corresponding Instructions for Use.



CEMENTATION NAVIGATION SYSTEM

Finding your way out of the cements maze

The Cementation Navigation System, the popular multimedia application, offers dentists practical orientation and guidance in the selection of the best luting material for each case.

www.cementation-navigation.com

- DETAILED 3D ANIMATION
- STEP-BY-STEP INSTRUCTIONS
- EASY OPERATION



Variolink® Esthetic

The esthetic luting composite

AMAZINGLY SIMPLE ESTHETICS!

The luting composite for exceptional esthetics
and user-friendly processing

- Balanced and concise Effect shade system
- Excellent shade stability due to amine-free composition
- Easy, controlled excess removal

Recommended for
IPS
e.max
CAD/Press

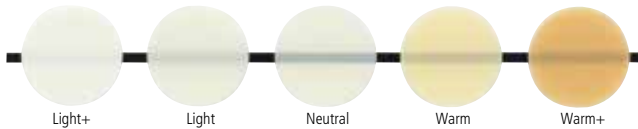
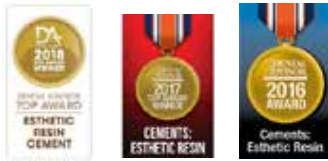
Recommended for
Tetric CAD



ivoclar
vivadent
passion vision innovation

Variolink® Esthetic

Variolink® Esthetic is an esthetic light- and dual-curing luting composite for the permanent cementation of demanding ceramic and composite restorations.



Indications:

Variolink Esthetic LC

- Permanent adhesive luting of glass-ceramic, lithium disilicate glass-ceramic and composite restorations (inlays, onlays and veneers).
- Only use Variolink Esthetic LC for restorations with a low thickness of <2 mm that have sufficient translucency (e.g. IPS e.max® HT).

Variolink Esthetic DC

- Permanent adhesive luting of glass-ceramic, lithium disilicate glass-ceramic and composite restorations (inlays, onlays, partial crowns, crowns, bridges)
- Restorations made of opaque ceramics, e.g. oxide ceramics can only be permanently cemented if an adhesive is additionally used that is separately light-cured.

Advantages:

- Straightforward Effect shade system
- Excellent shade stability thanks to the amine-free formulation
- Easy excess removal
- Flexible, situational consistency – ideal combination of flowability and stability
- Ideal bonding with Adhese® Universal
- Reliable bonding to the restoration with Monobond® Plus

Shades:

Light+, Light, Neutral, Warm, Warm+

Delivery forms

Variolink® Esthetic LC System Kit

Variolink Esthetic LC in 3 shades	3 x 2 g	
Variolink Esthetic Try-In Paste in 3 shades	3 x 1.7 g	
Total Etch	1 x 2 g	
Adhese Universal VivaPen or bottle	1 x 2 ml or 1 x 5 g	
Monobond Plus	1 x 5 g	
Liquid Strip	1 x 2.5 g	
VivaPen brush cannulas	30x	
VivaPen protective sleeves	20x	
Variolink application tips	20x	
Brush holder	1x	
Brushes, soft	50x	
var. accessories		
Adhese® Universal VivaPen®		666433WW
Adhese® Universal bottle		666065WW

Variolink® Esthetic DC System Kit

Variolink Esthetic DC in 3 shades	3 x 5 g	
Variolink Esthetic Try-In Paste in 3 shades	3 x 1.7 g	
Total Etch	1 x 2 g	
Adhese Universal VivaPen or bottle	1 x 2 ml or 1 x 5 g	
Monobond Plus	1 x 5 g	
Liquid Strip	1 x 2.5 g	
VivaPen brush cannulas	30x	
VivaPen protective sleeves	20x	
Mixing tips	30x	
Variolink application tips	5x	
Brush holder	1x	
Brushes, soft	50x	
var. accessories		
Adhese® Universal VivaPen®		666434WW
Adhese® Universal bottle		666125WW

Variolink® Esthetic LC System Kit for IPS e.max® & IPS Empress® 681493WW

Variolink Esthetic LC in 3 shades	3 x 2 g	
Variolink Esthetic Try-In Paste in 3 shades	3 x 1.7 g	
Total Etch	1 x 2 g	
Adhese Universal VivaPen	1 x 2 ml	
Monobond Etch & Prime	1 x 5 g	
Liquid Strip	1 x 2.5 g	
VivaPen brush cannulas	30x	
VivaPen protective sleeves	20x	
Variolink application tips	20x	
Vivadent applicators	50x	
var. accessories		

Variolink® Esthetic DC System Kit for IPS e.max® & IPS Empress® 681492WW

Variolink Esthetic DC in 3 shades	3 x 5 g	
Variolink Esthetic Try-In Paste in 3 shades	3 x 1.7 g	
Total Etch	1 x 2 g	
Adhese Universal VivaPen	1 x 2 ml	
Monobond Etch & Prime	1 x 5 g	
Liquid Strip	1 x 2.5 g	
VivaPen brush cannulas	30x	
VivaPen protective sleeves	20x	
Mixing tips	30x	
Variolink application tips	20x	
Vivadent applicators	50x	
var. accessories		

Variolink® Esthetic DC Starter Kit 687593WW

Variolink Esthetic DC neutral	1 x 2.5 g	
Variolink Esthetic Try-In Paste	1 x 1.7 g	
Adhese Universal VivaPen	1 x 0.5 ml	
Monobond Plus	1 x 1 g	
Liquid Strip	1 x 2.5 g	
VivaPen brush cannulas	10x	
VivaPen protective sleeves	20x	
Variolink application tips	5x	
Mixing tips	4x	
var. accessories		

Variolink® Esthetic DC Starter Kit for IPS e.max® & IPS Empress® 687592WW

Variolink Esthetic DC neutral	1 x 2.5 g	
Variolink Esthetic Try-In Paste	1 x 1.7 g	
Adhese Universal VivaPen	1 x 0.5 ml	
Monobond Etch & Prime	1 x 1 g	
Liquid Strip	1 x 2.5 g	
Variolink application tips	5x	
VivaPen brush cannulas	10x	
VivaPen protective sleeves	20x	
Mixing tips	4x	
var. accessories		

Variolink® Esthetic LC Refill

Variolink Esthetic LC	1 x 2 g	
Application tips	5x	
Light+		666126WW
Light		666127WW
Neutral		666128WW
Warm		666129WW
Warm+		666130WW

Variolink® Esthetic DC Refill

Variolink Esthetic DC	1 x 5 g	
Application tips	10x	
Light+		666117WW
Light		666118WW
Neutral		666119WW
Warm		666120WW
Warm+		666121WW

Variolink® Esthetic DC Refill

Variolink Esthetic DC	1 x 9 g	
Application tips	15x	
Light		666122WW
Neutral		666123WW
Warm		666124WW

Variolink® Esthetic DC set of three Refill

Variolink Esthetic DC	3 x 9 g	
Application tips	45x	
Light		692424WW
Neutral		692425WW
Warm		692426WW

Variolink® Esthetic Try-In Paste Refill

Variolink Esthetic Try-In Paste	1 x 1.7 g	
Application tips	5x	
Light+		666067WW
Light		666113WW
Neutral		666114WW
Warm		666115WW
Warm+		666116WW

Mixing Tips Refill 15x 645951**Mixing Tips small Refill** 10x 683287**Variolink® Application Tips Refill** 20x 559224**Intra Oral Tips small Refill** 10x 604210

SpeedCEM® Plus

Self-adhesive resin cement



A BIG PLUS FOR ZIRCONA



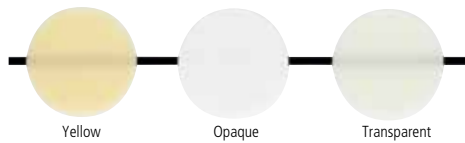
The plus factors:

- + Excellent self-cure performance ideal for zirconia and metal-ceramics
- + User-friendly handling and easy clean-up
- + Efficient process with just one component

ivoclar
vivadent®
passion vision innovation

SpeedCEM® Plus

SpeedCEM® Plus is a self-adhesive, self-curing resin cement with optional light-curing. The material offers an ideal combination of performance and user-friendliness. Its formulation has been optimized to make it particularly suitable for use in conjunction with restorations made of zirconium oxide and metal-ceramics and for the cementation of restorations on implant abutments.



SpeedCEM Plus is suited for the permanent seating of crowns and bridges on natural teeth and on implant abutments that are made of the following restorative materials:

- Oxide ceramics such as zirconium oxide, e.g. IPS e.max® ZirCAD
- Metal and metal-based restorations
- Lithium disilicate glass-ceramics, e.g. IPS e.max®

Advantages:

- Excellent self-cure performance
- User-friendly handling
- Easy clean-up
- Tolerant processing
- High radiopacity
- Efficient process

Shades:

Transparent, Yellow, Opaque

Delivery forms

Refills

SpeedCEM Plus Automix syringe	1 x 9 g	
Mixing tips	15x	
Root Canal Tips	5x	
Yellow		681710
Opaque		681711
Transparent		681712

Set of three Refills

SpeedCEM Plus Automix syringe	3 x 9 g	
Mixing tips	45x	
Root Canal Tips	15x	
Yellow		692423
Transparent		692422

Starter Pack

SpeedCEM Plus Automix syringe	1 x 2.5 g	
Ivoclean	1 g	
Mixing tips	4x	
Transparent		681713

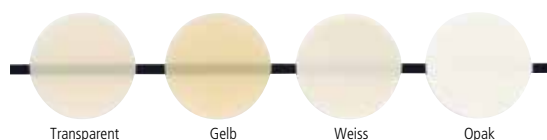
System Kit

SpeedCEM Plus Automix syringe	1 x 9 g	
Ivoclean	5 g	
Mixing tips	15x	
Transparent		681714

Refill Mixing tips	15x	645951
Root Canal Tips	5x	645955

Multilink® Automix

Multilink Automix® is an adhesive luting system for the cementation of indirect restorations made of silicate and oxide ceramics (e.g. IPS e.max®), metal, metal-ceramics as well as composites.



Indications:

Cementation of indirect restorations (inlays, onlays, crowns, bridges, endodontic posts) made of:

- Metal and metal-ceramics (PFM)
- All-ceramics (silicate)
- Reinforced all-ceramics (zirconium and aluminium oxide)
- Composites and fibre-reinforced composites (FRC)

Advantages:

- Strong hold – dual- as well as self-curing
- Universal – cementation of silicate and oxide ceramics as well as metal
- Clinically proven – many long-term studies
- Optimum removal of excess material
- Optimum esthetics
- Optimum marginal quality

Shades:

Transparent, yellow, white, opaque

Delivery forms

System Pack

Multilink Automix syringe	1 x 9 g	
Mixing Tips	15 x	
Root Canal Tips	5 x	
Multilink Primer A+B	2 x 3 g	
Monobond Plus	1 x 5 g	
Liquid Strip	1 x 2.5 g	
Application Tips for Liquid Strip	5 x	
Applicators (large and small)	25 x each	
Mixing Pad	1 x	
Mixing Plate (for Multilink Primer A+B)	1 x	
var. accessories		
Transparent		627471
Yellow		627473
Opaque		627472
White		645954

Refill Multilink® Automix

Multilink Automix syringe	1 x 9 g	
Mixing Tips	15x	
var. accessories		
Transparent		615216
Yellow		615217
Opaque		615218
White		645952

Refill Multilink® Automix Try-In

Multilink Automix Try-In syringe	1 x 1.7 g	
Transparent		645956
Yellow		645957
Opaque		645958
White		645959

Refill Multilink® Primer A+B	2 x 3 g	576825
Refill Multilink® Primer A	1 x 3 g	613626
Refill Multilink® Primer B	1 x 3 g	613627
Refill Monobond® Plus	1 x 5 g	626221
Refill Liquid Strip	1 x 2.5 g	532505
Refill Mixing Tips	15x	645951
Root Canal Tips (Intra Canal and Mixing Tips)	5 x each	645955
Application Tips for Liquid Strip	20 x	533666
Refill Applicators (25 large, 25 small)	2x 25	592435

Vivaglass® CEM PL

Self-curing glass-ionomer cement with high translucency.



Indications:

- Cementation of full-cast crowns or veneers, high-strength all-ceramic materials and orthodontic bands.

Advantages:

- High translucency
- 1:1 mixing ratio
- Radiopacity
- Strong bond to dentin
- Optimum wetting of powder and liquid
- Easy removal of excess material

Shade:

Universal

Delivery forms

Assortment	1 x 30 g / 10 ml	562256
Powder, Liquid, var. accessories		
Refill	1 x 10 ml	638995

Monobond Etch & Prime®

Monobond Etch & Prime® is a single-component ceramic primer that allows **glass-ceramic surfaces** to be etched and silanated in one easy step.



Indications:

- Conditioning of glass-ceramic surfaces for the adhesive bond with luting composites

Advantages:

- Eliminates the unpopular etching of the glass-ceramic surface with hydrofluoric acid
- The glass-ceramic is etched and conditioned in one step
- A reliable bond to the adhesive is established

Delivery forms

Monobond Etch & Prime Refill	1 x 5 g	673026WW
------------------------------	---------	----------

Monobond® Plus

Universal, single-component bonding agent for **all** indirect restorative materials.



Indications:

Universal, single-component bonding agent for all indirect restorative materials (glass and oxide ceramics, metal, composite, fibre-reinforced composite). It generates a sound bond between the restoration and the cementation material.

Delivery forms

Refill	1 x 5 g	626221
--------	---------	--------

Ivoclean®

Universal cleaning paste especially designed for removing contaminants, in particular those containing proteins, from restoration surfaces after intraoral try-in.



Indication:

- Extraoral cleaning of pre-treated ceramic and metal restoration surfaces

Delivery forms

Refill	1 x 5 g	637568
--------	---------	--------

Liquid Strip

Glycerine gel to prevent the oxygen-inhibited layer of composites with composite or ceramic restorations.



Indications:

- Try-in paste
- Preventing an inhibited layer with composites
- Protecting the etching pattern of lab-fabricated all-ceramic restorations

Delivery forms

Refill	1 x 2.5 g	532505
--------	-----------	--------

Heliosit® Orthodontic

Light-curing, highly transparent single-component luting material for brackets.



Advantages:

- No dosing, no mixing
- Brackets can be placed on the tooth surfaces without time pressure due to the light-curing properties of the material

Delivery forms

Refill	3 x 2.5 g	532629
--------	-----------	--------

Ceramic Repair

Comprehensive system for intraoral repairs of ceramic and composite restorations.



Indications:

Repairs of fractures in:

- Ceramic-veneered restorations
- All-ceramic restorations
- Composite restorations

Advantages:

- Comprehensive system
- Clinically proven materials
- Well-structured processing procedure

Delivery forms

Intro Pack		628838
Tetric EvoCeram (A1, A2, A3, A3.5 Dentin)	4 x 3 g	
IPS Empress Direct Opaque	1 x 1.8 g	
Monobond Plus	1 x 5 g	
Heliobond	1 x 6 g	
var. accessories		

ApexCal®

ApexCal® is the new, creamy calcium hydroxide paste suitable for use as a temporary disinfectant dressing during endodontic treatment.



Direct application of ApexCal with a tip

Application of ApexCal with a lentulo spiral

Rinsing out of the temporary ApexCal dressing

Indications:

- Applied as a drug filler during root canal treatment and used for indirect and direct pulp capping

Advantages:

- Time-saving direct application
- Easy removal, as the material does not set when in place
- High radiopacity (400% Al)

Delivery forms

Refill		595915
Syringes ApexCal	2 x 2.5 g	
Cannulas	15x	
Refill Cannulas	15x	596608

Apexit® Plus

Calcium hydroxide root canal sealer for the permanent obturation of root canals.



Initial situation

Direct application of Apexit Plus using an Intra Canal Tip

Application of Apexit Plus using a lentulo spiral



Insertion of the gutta percha points

Condensation of the gutta percha points using a spreader

Obturated root canal

Indications:

- Permanent obturation of root canals in conjunction with all obturation techniques involving gutta-percha

Advantages:

- Excellent tissue tolerance
- Durable sealing of the root canal due to the slight setting expansion
- Its easy flowing composition allows the material to adapt well even to morphologically complicated canals
- Convenient application (automix syringe and Intra Canal Tip enable easy direct application)
- Long working time (mixed Apexit® Plus can be used over three hours at room temperature)

Delivery forms

Refill		593991
Double-push Syringes	2 x 6 g	
Mixing Tips	15x	
Intra Canal Tips	5x	
Refill Mixing Tips	15x	595132
Refill Intra Canal Tips	15x	597380

FRC Postec® Plus

FRC Postec® Plus is a highly esthetic and highly radiopaque root canal post composed of glass fibre-reinforced composite. The post is suitable for the chairside reconstruction of endodontically treated teeth that show extensive coronal damage.

The FRC Postec Plus system consists of light-transmitting glass fibre-reinforced composite posts in three sizes and includes purpose-designed stainless steel reamers for the preparation of the recipient site of the post space.



Prepare the post space



Cement the post with Multilink



Build up the core with MultiCore Flow



Completed core build-up

Indications:

- Restoration of endodontically treated anterior and posterior teeth that demonstrate severe coronal damage

Advantages:

- Lifelike appearance
- Superior radiopacity
- High retention
- Gentle on roots
- Clearly arranged system using tried-and-tested products
- Easy to remove
- Clinically proven concept

Delivery forms

Intro Pack Size 0/1/3		603543
FRC Postec Plus Size 0	3x	
FRC Postec Plus Size 1	5x	
FRC Postec Plus Size 3	2x	
FRC Postec Plus Reamer Size 0	1x	
FRC Postec Plus Reamer Size 1	1x	
FRC Postec Plus Reamer Size 3	1x	
Refill Size 0	20x	603540
Refill Size 0	5x	603541
Refill Size 1	20x	590222
Refill Size 1	5x	583244
Refill Size 3	20x	590223
Refill Size 3	5x	583245
Refill Reamer, Size 0	1x	603542
Refill Reamer, Size 1	1x	572801
Refill Reamer, Size 3	1x	572800

MultiCore® Flow

Self-curing composite core build-up material with light curing option. Two curing methods and four shades provide an optimum foundation for the reconstruction of vital and non-vital teeth with part or most of the clinical crown missing.



Automix syringe, 10 g



Cartridge, 50 g

Indications:

- Core build-up of vital and non-vital teeth

Advantages:

- Based on Ivoclar Vivadent's long-term experience in the field of composite technology
- A suitable option for every case: self- or light-curing
- Four different shades

Shades:

Light, medium, blue and white

Delivery forms

MultiCore® Flow

Refill	1 x 10 g	
Automix Syringe, var. accessories		
Light		604166
Medium		604167
White		604168
Mixing Tips small	10x	683287
Intra Oral Tips small	10x	604210
Root Canal Tips	5x	645955
Refill	1 x 50 g	
Cartridge, var. accessories		
Light		578913
Medium		578914
Blue		578915
Dispenser	1x	579094
Mixing Tips	50x	579096
Intra Oral Tips	50x	579095

Virtual®

Virtual® is the new line of vinylpolysiloxane impression materials specifically developed to meet the requirements of today's most popular impression taking techniques.

The system features the five viscosities Putty, Heavy Body, Monophase, Light Body and Extra Light Body in both "fast" (2:30 min.) and "regular" (4:30 min.) setting times.

The system is complemented by a full line of accessories, including a tray adhesive.



Indications:

- Final impressions used for the fabrication of indirect restorations (crowns, bridges, inlays, onlays and veneers)
- Dental implant impressions
- Matrix for "wax-ups" and treatment planning, study models
- Edentulous impressions
- Matrix used to create temporary restorations

Advantages:

- Excellent adaptation to the moist dentin and soft tissues
- Excellent moisture displacement
- Exceptional readability and precision
- Flexible working times and fast setting phase
- Fresh peppermint scent
- Outstanding balance of physical properties

Shades:

- Sea blue: Virtual Putty, Virtual Heavy Body and Virtual Monophase
- Caramel: Virtual Light Body and Virtual Extra Light Body

Delivery forms

Multi Pack	12 x 50 ml + Mixing Tips	
Extra Light Body Fast		572812
Extra Light Body Regular		572813
Light Body Fast		572826
Light Body Regular		572827
Monophase Fast		572828
Monophase Regular		572829
Heavy Body Fast		572830
Heavy Body Regular		572831

Refill	2 x 50 ml + 12 Mixing Tips	
Extra Light Body Regular		562827
Extra Light Body Fast		562828
Light Body Regular		562829
Light Body Fast		562830

Refill	2 x 50 ml + 6 Mixing Tips	
Monophase Regular		562831
Monophase Fast		562832
Heavy Body Regular		562835
Heavy Body Fast		562836

Refill		
Putty Regular	2 x 300 ml	562839
Putty Fast	2 x 300 ml	562840

Accessories

Tray Adhesive	1 x 10ml	562841
Refill Mixing Tips, small	48x	572806
Refill Mixing Tips, large	48x	572807
Refill Intra Oral Tips, large	100x	572808
Refill Intra Oral Tips, small	100x	572809
Refill Dispenser 1:1	1x	572810

Virtual® 380

The two consistencies Heavy Body and Monophase are now offered as Virtual® 380 in new, large cartridges. These XXL cartridges are suitable for use in e.g. Pentamix, Plug & Press Dispenser and MixStar mixing units.



Advantages:

- Ready-to-use, large cartridge - convenient handling
- Separate activation as in the case of foil bags is not required
- Economical package size - contents 380ml

Delivery forms

Multi Pack		6 x 380 ml each + Mixer + Bayonet Ring
Monophase Fast		594835
Heavy Body Fast		594836
Heavy Body Regular		594837

Refill		2 x 380 ml each + Mixer + Bayonet Ring
Monophase Fast		594838
Heavy Body Fast		594839
Heavy Body Regular		594840

Accessories

Refill Dynamic Mixer	50x	600158
-----------------------------	------------	---------------

Technical Data	Extra Light Body	Light Body	Monophase		Heavy Body		Putty
Colour	Caramel	Caramel	Sea blue		Sea blue		Sea blue
Contents	50 ml	50 ml	50 ml	380 ml	50 ml	380 ml	2 x 300 ml
Working time							
Fast	1:00 min.	1:00 min.	1:00 min.	1:00 min.	1:00 min.	1:00 min.	1:00 min.
Regular	1:30 min.	1:30 min.	1:30 min.	–	1:30 min.	1:30 min.	1:30 min.
Time in mouth							
Fast	2:30 min.	2:30 min.	2:30 min.	3:30 min.	2:30 min.	2:30 min.	2:30 min.
Regular	4:30 min.	4:30 min.	4:30 min.	–	4:30 min.	4:30 min.	4:30 min.
Linear dimensional change 24 h	≤ 1.50 %	≤ 1.50 %	≤ 1.50 %		≤ 1.50 %		≤ 1.50 %
Strain in compression (min.–max.)	2–8 %	2–8 %	2–8 %		0.8–5 %		0.8–5 %
Recovery from deformation	≥ 96.5 %	≥ 96.5 %	≥ 96.5 %		≥ 96.5 %		≥ 96.5 %
Detail reproduction	20 μ	20 μ	20 μ		50 μ		75 μ
Shore-A hardness	43–51	50–57	64–71		66–76		58–64



Virtual® CADbite

Virtual® CADbite registration material is scannable and can be used for the optical recording of data when fabricating restorations with CAD/CAM systems. Virtual CADbite is an addition silicone, which may also be used for conventional bite registration techniques in conjunction with indirect restorative procedures.

The material demonstrates a non-slump consistency, short setting time and good dimensional stability. Moreover, it provides excellent reproduction of detail and achieves a final hardness of 32 Shore-D.



Bite registration with Virtual CADbite in situ



Scanned bite record

Advantages:

Fast

As the material requires an intra-oral set time of only 45 seconds, the risk of distortions and inaccuracies due to patient jaw movements are substantially reduced. At the same time, Virtual CADbite provides sufficient working time to allow full-arch bite registrations to be taken.

Strong

Due to the material's high final hardness of 32 Shore-D and high fracture toughness, Virtual CADbite registrations are easy to trim and grind. Moreover, undesirable shifts are prevented when adjusting the position of the casts in the articulator.

Scannable

In response to the needs of CAD/CAM users across the globe, Virtual CADbite has been given a reflective surface. It delivers excellent results when capturing images with intra-oral scanning devices.

Delivery forms

Multi Pack and Mixing Tips	12 x 50 ml	607909
Refill and Mixing Tips	2 x 50 ml	607908

Accessories

Refill Mixing Tips, small	48x	572806
----------------------------------	------------	---------------

Centric Tray

Centric Tray is an impression tray for the time-saving determination of jaw relations in complete and partial denture prosthetics.



Advantages:

- Reliable determination of the centric relation
- Reusable, hence time-saving and economical

Delivery forms

Centric Tray		559166
Centric Tray	1x	
Regular Supports	3x	
Supporting Wings	3x	

Bluephase® PowerCure

The high-performance curing light



With intelligent curing assistant

Your personal curing assistant detects movement during the light-curing step and helps you achieve reliable curing results.

Efficient
Esthetics



Isolate



Bond



Restore



Cure

ivoclar
vivadent®
passion vision innovation

Intelligent LED light – carefree curing

Patented Polyvision technology is your personal assistant when it comes to curing dental materials.

This automatic assistance system helps you achieve reliable curing results. The curing light automatically detects movement of the handpiece during the light-curing procedure. It alerts the user of the improper operation by vibrating and automatically extends the exposure time by 10 per cent, if necessary. If the movement may prevent the material from curing properly, the light will automatically interrupt the exposure cycle so that it can be repeated. Bluephase PowerCure comes with active anti-glare protection to prevent the light from being activated in open space.

Additional advantages:

Reliable curing performance

all light-curing materials due to polywave LED

Short curing times

starting from 3 seconds

Additional Pre-Cure program

for the removal of excess cement

**Wide
10-mm light guide**

Homogeneous
light emission performance

Backlit display
for optimized hygiene

Contactless battery charging

Europe's number

1¹

Bluephase® PowerCure –



The high-performance Bluephase® PowerCure features a light intensity of 3,000 mW/cm². It cures materials in extremely short exposure times of only 3 seconds.

Indications:

Light unit to polymerize all light-curing dental materials in a wavelength range of 385 – 515 nm.



Advantages:

- Light intensity of up to 3,000 mW/cm² in the Power Cure program for extremely short exposure times starting from 3 seconds
- Very short exposure times starting from 3 seconds help save time and heighten efficiency
- Integrated intelligent Polyvision light-curing assistant
- Polywave LED with broad wavelength range of 385-515 nm, suitable for all materials
- Four adjustable curing times as well as a choice of two light-curing modes for all indications: High Power (1,200 mW/cm²) and Turbo (2,000 mW/cm²)
- Additional PreCure program for the clean-up of excess cement
- Click&Cure corded operation for battery-independent use; includes radiometer
- Cordless design for ultimate mobility
- Ease of use due to intuitive two-button operation
- 10>9-mm light guide for large treatment areas
- Short light guide: all tooth surfaces can be easily reached without the patient having to open their mouth extra wide
- Inductive charging prevents soiling of the charging contacts of the battery
- Battery status is visible from a far distance due to the clear charging indicator on the charging station
- High-performance lithium ion battery for a total of 20 minutes of operation in the HIGH mode
- Homogenous distribution of light
- Backlit display for optimized hygiene
- Radiometer integrated in the charging station
- 3-year warranty (1-year warranty for battery)
- Available in grey

Delivery forms

Bluephase® PowerCure 100–240 V (incl. radiometer) 667092

Bluephase® PowerCure System Kit

Bluephase PowerCure 100–240 V		1x
Tetric PowerFill, shade "A, syringe or Cavifil	1 x 3 g or 20 x 0.2 g	
Tetric PowerFlow, shade "A		1 x 2 g
Adhese Universal VivaPen		1 x 2 ml
var. accessories		

Bluephase PowerCure System Kit syringe **668253**

Bluephase PowerCure System Kit mixed **691918**

Bluephase® PowerCure Handpiece 667093

Bluephase® G4 –

Bluephase® G4 is the first Bluephase curing light featuring the personal and patented assistance system Polyvision.

Indications:

The LED curing light of the 4th LED generation with a light intensity of 1'200 mW/cm² is used for the polymerization of all light-curing dental materials curing in the wavelength range of 385–515 nm.



Advantages:

- Integrated intelligent Polyvision light-curing assistant
- Broad wavelength range of 385-515 nm, suitable for all materials
- High light intensity of 1,200 mW/cm² for short exposure times starting from 10 seconds
- Additional PreCure program for the removal of excess cement
- Click&Cure corded operation for battery-independent use; includes radiometer
- Cordless design for ultimate mobility
- Ease of use due to intuitive two-button operation
- 10-mm light guide for large treatment areas
- Short light guide: all tooth surfaces can be easily reached without the patient having to open their mouth extra wide
- Inductive charging prevents soiling of the charging contacts of the battery
- Battery status is visible from a far distance due to the clear charging indicator on the charging station
- High-performance lithium ion battery for a total of 20 minutes of operation in the HIGH mode
- Homogenous distribution of light
- Backlit display for optimized hygiene
- Radiometer integrated in the charging station
- 3-year warranty (1-year warranty for battery)
- Available in grey

Delivery forms

Bluephase® G4 100–240 V, grey	691258
Bluephase® G4 100–240 V, grey (incl. radiometer)	691257

Bluephase® Meter II

The dental radiometer

Bluephase® Meter II is a precise dental radiometer for the quick and easy verification of the light intensity of all types of curing lights.

Indication:

Enables exact and unrestricted verification of the light intensity in [mW/cm²] and the light output in [mW] of all curing lights in the wavelength range of 380–550 nm with an accuracy tolerance of ±10% as compared to the measurement with an integrating sphere.



Advantages:

- Innovative measuring principle offering an unprecedented measuring accuracy for dental radiometers
- Universally applicable for any curing light (halogen-, plasma-, LED-devices, etc.)
- Integrated template to determine the diameter of circular guides between 6–12 mm
- Additional program to determine the light output in milliwatt [mW] analogue to integrating sphere
- Digital display
- Ergonomic and modern design
- 3-year warranty

Delivery forms

Bluephase® Meter II

667124

Delivery forms and accessories

		Bluephase® G4	Bluephase® PowerCure
Complete curing light 100 – 240 V		691 258	–
Complete curing light 100–240 V incl. radiometer		691 257	667 092 grau
Bluephase Meter II	667 124	✓	✓
10-mm light guide, black	667 497	■	–
10-mm light guide, black	691 265	–	■
10 > 9-mm light guide, black	668 873	–	■
6 > 2 mm (Pin-Point), black	691 264	✓	✓
Protective sleeves	691 666	■	■
Anti-glare cone	551 756	■	■
Anti-glare shield	691 255	✓	✓
Battery	691 251	✓	✓
Handpiece (handpiece, battery, light guide)		691 256	667 093 grau
Handpiece holder	691 262	✓	✓

■ Included in Delivery forms ✓ Available as accessory

Silamat® S6

Form and function – perfectly mixed.

Indication:

- Modern universal mixer for amalgam, glass ionomer cements and other predosed dental materials in capsules and injection capsules



Advantages:

- Attractive design for the modern dental practice
- Thanks to its rounded shape and the removable cover the unit can be cleaned easily
- Tried-and-tested Silamat technology
- Above-average speed of 4500 rpm
- Special figure-eight pattern and patented mixing fork
- Compatible with all popular capsules and injection capsules in various shapes and sizes
- Three-year warranty
- Voltage 100–240 VAC

Delivery forms

Silamat® S6	100 – 240 VAC	602286
-------------	---------------	--------

Programat® CS2

The Programat® CS series is the ideal ceramic and crystallization furnace for dentists. The furnace has been specially developed for the crystallization of IPS e.max® CAD restorations. The Programat CS2 is easily operated by means of the new colour touch screen display and the proven membrane-sealed keypad. It is furthermore equipped with 20 individual programs as well as predefined Ivoclar Vivadent programs, such as the Speed program, which crystallizes IPS e.max CAD restorations in less than 15 minutes.

The new and modern operating concept and the QTK2 muffle technology are only two of the many new innovations featured in the Programat CS2. The QTK2 muffle technology is responsible for even more homogeneous heat distribution in the firing chamber, leading to optimum firing results and a prolonged life cycle of the heating element. Additionally, the new vacuum pump control system with double valve technology ensures noiseless and power-saving operation of the vacuum pump.

Technical Data:

- Voltage: 200 – 240 V / 50 – 60 Hz
110 – 120 V / 50 – 60 Hz
100 V / 50 – 60 Hz
- Dimensions of the closed furnace: Depth: 465 mm
Width = 305 / 410 mm (with cooling tray)
Height: 320 mm
- Usable size of the firing chamber: Diameter: 90 mm, height: 80 mm
- Max. firing temperature: 1200 °C



Advantages:

- Colour touch screen display and proven membrane-sealed keypad
- QTK2 muffle technology with SiC bottom reflector
- Easy operation; specially developed for use in the dental practice
- Automatic double-range temperature calibration (ATK2)
- Remote diagnostics via Internet, e-mail and data log files
- Software updates via USB flash drive
- Power-saving technology
- Optical Status Display (OSD)
- Modern and ergonomic design
- Modern interfaces (USB, Ethernet interface, SD card reader)
- Large cooling tray
- Integrated tong holder
- 20 individual firing programs
- Double valve vacuum technology
- Removable furnace head
- Power Fail Save System

Colour:

White

Delivery forms

Programat® CS2	200 – 240 V / 50 – 60 *	645986
----------------	-------------------------	--------

Programat CS2, power cord, vacuum hose, cooling tray, SiC firing plate, Programat Firing Tray Kit, Automatic Temperature Checking Set 2 ATK2 (test set), USB download cable, Programat USB flash drive, extra fuses, CD-ROM "PrograBase X10", display cleaning cloth, tong holder, firing tongs, IPS e.max CAD Speed Crystallization Tray

* other voltage versions available

Programat® CS3

The Programat® CS3 is the ideal ceramic and crystallization furnace for dentists with high demands. It has been especially developed for the crystallization of IPS e.max® CAD restorations. The furnace is operated via the 7-inch colour touch screen display with a specially developed operating concept for the dental practice and the well-proven membrane-sealed keypad. The Programat CS3 features over 30 individual programs and preset Ivoclar Vivadent programs, one of which is the Speed program which crystallizes IPS e.max CAD restorations in less than 15 minutes.

With the help of the patented Digital Shade Assistant (DSA) the selection of the tooth shade can be achieved instantly. The software compares the tooth to be analyzed with three pre-selected shade guide teeth in a picture. A special image processing software recognizes the tooth to be analyzed and the three shade guide teeth. The best matching tooth shade is displayed on the furnace screen as a result.

The proven QTK2 muffle technology ensures an even more homogenous heat distribution in the firing chamber. Optimal firing results are achieved and the life cycle of the heating element is prolonged. The new vacuum pump control system with double valve technology ensures noiseless and power-saving operation.

Technical Data:

- Voltage: 200 – 240 V / 50 – 60 Hz
110 – 120 V / 50 – 60 Hz
100 V / 50 – 60 Hz
- Dimensions of the closed furnace: Depth: 495 mm
Width: 320 mm / 395 mm (with cooling tray)
Height: 320 mm
- Usable size of the firing chamber: Diameter: 90 mm, height : 80 mm
- Max. firing temperature: 1200 °C

Advantages:

- Firing and crystallization furnace with integrated DSA function for the digital analysis of the tooth shade.
- Colour touch screen display in combination with the proven membrane-sealed keypad.
- Operating concept specially developed for the dental practice.
- QTK2 muffle technology with SiC bottom reflector
- Automatic double-range calibration (ATK2)
- Remote diagnostics through the Internet via e-mail and data log files
- Integrated power-saving function (Power-Saving Technology)
- Optical Status Display (OSD)
- Modern, ergonomic design
- Software updates via USB flash drive
- Programat WLAN Kit for wireless data transfer (software updates, PrograBase X10)
- Modern interfaces (USB, ethernet, SD card reader)
- Large cooling tray
- Integrated tong holder for firing goods
- 30 individual firing programs
- Double valve vacuum technology
- Removable furnace head
- Power Fail Save System

Colour:

White

Delivery forms

Programat® CS3	200 – 240 V / 50 – 60 *	681117
----------------	-------------------------	--------

Programat CS3, power cord, vacuum hose, cooling tray, SiC firing table, Programat Firing Tray Kit, Automatic Temperature Checking Set ATK 2 (test set), extra fuses, USB cable, CD-ROM "PrograBase X10", Programat USB flash drive, Programat WLAN Kit, display cleaning cloth, tong holder, firing tongs, Digital Shade Assistant Holder Kit, A-D Shade Guide, IPS e.max CAD Speed Crystallization Tray

* other voltage versions available



Programat[®] CS4

The combination furnace for sintering and crystallization



Fast
and easy ...

... for flawless IPS e.max[®] ZirCAD and IPS e.max[®] CAD restorations

- Sintering of IPS e.max ZirCAD restorations
- Glazing and crystallization of IPS e.max CAD restorations
- Open system with many individual programs


ivoclar
vivadent[®]
passion vision innovation

Programat® CS4

Programat® CS4 is a compact multifunctional furnace for dental practices. It is designed for sintering zirconium oxide restorations, e.g. IPS e.max® ZirCAD. It can also be employed as a glazing and crystallization furnace for IPS e.max CAD and IPS Empress® CAD. The Speed program allows ZrO₂ restorations to be manufactured directly in the dental practice in a single appointment.

Programat CS4 sinters restorations at temperatures up to 1,600 °C. The clearly arranged membrane-sealed keypad with graphic display enables easy operation. Both pre-set and individual programs for third-party materials are available.

Technical Data:

- Voltage: 118 – 240 V / 50 – 60 Hz
- Dimensions of the closed furnace:
 - Depth: 430 mm
 - Width: 310 / 420 mm (with cooling tray)
 - Height: 570 mm
- Max. firing temperature: 1600 °C



Advantages:

- Fast sintering of IPS e.max ZirCAD (up to six units)
- Crystallization of IPS e.max CAD and IPS Empress CAD
- Simple and language-independent operation due to the proven combination of membrane-sealed keypad and graphic display
- Power Saving Technology
- Compact design
- Possibility of on-site temperature calibration
- OSD (Optical Status Display)
- Remote control via PC/laptop by means of PrograBase3 software

Colour:

White

Delivery forms

Programat® CS4	118 – 240 V / 50 – 60	688316
----------------	-----------------------	--------

Programat CS4, power cord, cooling tray "S", Programat sinter tray, IPS e.max CAD Speed Crystallization Tray, sintering furnace temperature checking set Starter Kit, USB cable, PrograBase3 software, operating instructions, var. accessories

Programat® Sinter Tray

The sinter tray permits easy loading of the Programat® CS4 and is imperative for optimum crystallization, glazing and sintering results. The special geometry of the tray ensures homogeneous heat distribution.



Delivery forms

Programat® Sinter Tray	1x	627987
-------------------------------	-----------	---------------

Sintering Furnace Temperature Checking Set MTH (1500 °C)

Ten temperature control rings to check the exact sintering temperature of the Programat® CS4.



Delivery forms

Refill Sintering Furnace Temperature Checking Set MTH (1500 °C)	627398	
--	---------------	--

Sinter rings	10x	
Conversion table	1x	

Sintering Furnace Temperature Checking Set UTH (880 °C)

Ten sinter rings to check the exact crystallization temperature of the Programat® CS4.



Delivery forms

Refill Sintering Furnace Temperature Checking Set MTH (880 °C)	688632	
---	---------------	--

Sinter rings	10x	
Conversion table	1x	

Sintering Furnace Temperature Checking Set Starter Kit

The Temperature Checking Set Starter Kit comprises all the components necessary to check and calibrate the sinter temperature of the Programat® CS4.



Delivery forms

Sintering Furnace Temperature Checking Set Starter Kit	627380
Sliding caliper	1x
Sinter rings	5x
Conversion table	1x

Programat® Sinter Tray Fork

The sinter tray fork is used to place the sinter tray inside the sintering chamber. Its shape has been precisely adjusted to fit the Programat® sinter tray.



Delivery forms

Programat® Sinter Tray Fork	1x	627988
-----------------------------	----	--------

Vacuum Pump VP5

The high-performance Vacuum Pump VP5 has been especially developed for the Ivoclar Vivadent ceramic and press furnaces. The pump features a very high delivery rate. In addition, it is characterized by a clear design and a carrying handle for convenient relocation.

Technical Data:

- Voltage: 230 V / 50 – 60 Hz
200 V / 50 – 60 Hz
115 V / 50 – 60 Hz
100 V / 50 – 60 Hz
- Power consumption: 80 Watt
- Final vacuum: approx. 20 mbar

Colour:

Standard colour: white (no special colours available)



Advantages:

- Modern, ergonomic design
- High vacuum performance
- High final vacuum (approx. 20 mbar **)
- High running smoothness
- Integrated carrying handle

Delivery forms

Vacuum Pump VP5 (white)	230 V / 50–60 Hz*	666308
Vacuum pump VP5		1x
Sound absorber		1x
Vacuum pump filter kit		1x

* other voltage versions available

** measured with a 4-liter test container

Vacuum Pump VP3 easy

The small and light-weight VP3 easy vacuum pump is suitable for the evacuation of the firing chamber in the Programat CS furnace. The diaphragm pump is characterized by low weight and extremely small dimensions.

Technical Data:

- Voltage: 230 V / 50 – 60 Hz
200 V / 50 – 60 Hz
115 V / 50 – 60 Hz
- Power consumption: 70 W
- Dimensions: 140 x 130 x 210 mm (W x H x D)
- Final vacuum: approx. 40 mbar

Advantages:

- Light weight
- Small dimensions
- Final vacuum: approx. 40 mbar

Colour:

grey

Delivery forms

Vacuum Pump VP3 easy (grey)	230 V / 50 – 60 Hz*	594554
Vacuum pump VP3 easy		1x
Sound absorber		1x
Vacuum pump filter kit		1x

* other voltage versions available



Vacuum Pump Filter Kit

This vacuum pump filter kit protects the vacuum pump from contamination.



Delivery forms

Vacuum Pump Filter Kit	680188
Vacuum pump filter kit	1x
Vacuum hose 200 mm	1x

Programat® Firing Tray Kit 2

The Firing Tray Kit 2 was specially developed for the Programat® furnaces. The support pins can be individually mounted to the firing tray if required.



Delivery forms

Programat Firing Tray Kit 2	655946
Firing Trays	2x
Support Pins A	6x
Support Pins B	6x
Fan Pins	2x
Ceramic Sleeves	2x
Hobbyceram Pen	1x

Metal Pins for Firing Tray

The support pins can be used for the Programat firing tray and can be mounted to the honeycomb firing tray if required.



Delivery forms

Metal Pins for Firing Tray, Refill	626698
Metal Pins A	4x
Metal Pins B	4x
Metal Pins C	4x

Ceramic Sleeves for Metal Pins

The ceramic sleeves can be placed on the metal pins to avoid that metal-free restorations come in contact with the metal pins.



Delivery forms

Ceramic Sleeves for Metal Pins Refill		666068
Ceramic Sleeves		10x

Automatic Temperature Checking Set "ATK 2"

The automatic temperature checking set "ATK 2" is used to check and adjust the firing temperatures in furnaces with automatic calibration programs for the ATK2 system (e.g. Programat® CS2). The simultaneous double-range calibration is a special feature of the ATK2.



Delivery forms

Automatic Temperature Checking Set "ATK 2"		598833
ATK 2 Samples		5x

Firing Tongs

These firing tongs are used to place objects in the firing chamber. High precision and excellent material quality are the special features of these tongs.



Delivery forms

Firing Tongs	1x	530665
---------------------	-----------	---------------

Programat® WLAN Kit

The WLAN Kit is used for the wireless data transfer (e.g. for Programat® CS3).



(symbolic figure)

Delivery forms

Programat® WLAN Kit	1x	655949
----------------------------	-----------	---------------

Digital Shade Assistant Starter Kit

The Digital Shade Assistant Starter Kit is especially designed for digital shade selection, including all components the user needs. The Digital Shade Assistant Holder is used for holding the shade guide teeth.



Delivery forms

Digital Shade Assistant Kit		679917
Digital Shade Assistant Holder	3x	
A–D shade guide	1x	

Digital Shade Assistant Holder Kit

The Digital Shade Assistant Holder is used for holding the shade guide teeth for the DSA function.



Delivery forms

Digital Shade Assistant Holder Kit		679916
Digital Shade Assistant Holder	2x	

UTS 3D Universal Transferbow System

This system permits skull/joint-related orientation of models into the Stratos articulators according to patients' individual data. The UTS 3D is adjustable according to the Frankfort Horizontal (FH) and Campers Plane (CP). The flexible modular construction of the transferbow permits its use with most articulator systems currently on the market.



Advantages:

- 3D-registration joint for rapid and precise fixation, with only one tommy screw
- Solid, light carbon-fibre constructions for improved convenience
- Ear pieces can be exchanged and disinfected
- Exchangeable nosepad

Delivery forms

UTS 3D		593710
Adjustable nosepiece		1x
Reference plane indicator (CP/FH)		1x
Axis pins		2x
Earpieces		2x
Registration joint		1x
Bite fork		1x
Nose pads		10x

Gnathometer M Type 2

Intraoral registration device according to Prof Dr Böttger for the determination of occlusal positions of edentulous patients. Permits fast and easy control of occlusal positions by needle-point tracing.



Advantages:

- Functional impression and registration in one appointment
- Multiple use; can be disinfected
- Connector for the UTS 3D transfer bow

Delivery forms

Gnathometer M Type 2 (complete)	1x	530484
---------------------------------	----	--------

Stratos® 100

The Stratos® 100 is a biofunctional average-value articulator for various simple dental reconstructions. Its ergonomic design with spacious column construction enables easy and efficient handling. The Stratos 100 is the ideal articulator to set up Ivoclar Vivadent teeth according to the Biofunctional Prosthetic System (BPS).



Advantages

- Centric locking catch
- Separable upper and lower frame
- Optimized joint mechanics with a protrusion path angle of 30° and a Bennett angle of 30° or 15°
- Compatible with split-cast systems
- Protrusion shift

Delivery forms

Stratos® 100	576820
Stratos 100	1x
Incisal plate 0°	1x
Incisal indicator	1x
Base blocks retentive	1x
Plaster protective plate	1x

Stratos® 200

The Stratos® 200 is a biofunctional articulator which is universally applicable due to its various options. Its ergonomic design with spacious column construction enables easy and efficient handling. Standard equipment contains additional 30° or 15° protrusion inserts for fixed or swivel axis, 30° Bennett inserts, and a 0° incisal plate, as well as an incline support holder.



Advantages:

- Centric locking catch
- Separable upper and lower frame
- Optimum joint mechanic with exchangeable Bennett/protrusion inserts
- Compatible with split-cast systems
- Side shift 0–1.5 mm
- Protrusion shift

Delivery forms

Stratos® 200	536381
Stratos 200	1x
Protrusion inserts 30°	2x
Bennett inserts 30°	2x
Incisal plate 0°	1x
Incisal indicator	1x
Base blocks retentive	2x
Plaster protective plate	1x
Incline support holder	1x

Stratos® 300

The Stratos® 300 is a biofunctional, individually adjustable articulator. All the joint angles can be continuously set without having to replace any elements. The Stratos 300 is suitable for demanding restorations for which the joint angles have to be individually set. Its ergonomic design with spacious column construction enables easy and efficient handling.



Advantages:

- Centric locking catch
- Separable upper and lower frame
- Optimized joint mechanics with continuously adjustable angles
 - Protrusion 0°–60°
 - Retrusion 35°
 - Bennett 0°–30°
 - Side shift 0–1.5 mm
 - Protrusion shift 0–4 mm
- Possibility of individual and average-value model orientation
- Compatible with split-cast systems

Delivery forms

Stratos® 300	576821
Stratos 300	1x
Incisal plate 0°	1x
Incisal indicator	1x
Base blocks retentive	2x
Plaster protection plate	1x

Ivoclar Vivadent

Oral Health Management

The Professional Care Program from Ivoclar Vivadent offers a system of professional solutions.

Recommended treatment		Low Caries Risk	High Caries Risk
Plaque accretion	Plaque Test		✓
Targeted recording of case history			✓
Check-ups		✓ 2x/yr	✓ 4-6x/yr
Bitewing X-ray for the early detection of proximal caries		✓	✓
Restoration of carious lesions	Tetric EvoCeram	✓	✓
	Tetric EvoFlow	✓	✓
	Bluephase	✓	✓
Reconstruction	IPS Empress	✓	✓
	Variolink Esthetic	✓	✓
Removal of plaque retention sites		✓	✓
Protection of exposed cervicals	VivaSens	✓	✓
Fissure sealing	Helioseal		✓
Topical fluoride application	Fluor Protector	✓ 2x/yr	✓ 4-6x/yr
Motivation and instruction for oral hygiene improvement		✓	✓
Professional tooth cleaning	Proxyt, OptraGate	✓	✓
Topical application of chlorhexidine	Cervitec F, Cervitec Plus		✓
	Cervitec Gel		✓
Nutrition counselling			✓

Dental practice

Measures

Dentifrice containing fluoride		✓	✓
Cleaning of interdental spaces		✓	✓
Rinsing solution or gel containing fluoride	Fluor Protector Gel		✓
Preparations with chlorhexidine	Cervitec Gel, Cervitec Liquid		✓
Preparations with bicarbonate			✓
Balanced diet		✓	✓
Hard-to-chew food			✓
Sweets and chewing gum with sugar substitute	Wrigley's ORBIT sugarfree dental chewing gum		✓

At home

Plaque Test

Fluorescent disclosing liquid to reveal bacterial biofilm on the surfaces of natural and restored teeth or implants.



Advantages:

- Fluorescent under any curing light
- Easy handling
- No inconvenient staining of tongue and mucous membranes

Delivery forms

Refill	1 x 11 g	533299
--------	----------	--------

Proxyl[®]

The prophy paste system with defined Relative Dentin Abrasion values (RDA) enables professional cleaning and polishing of teeth, restorations and implants according to the individual needs of patients. The pastes contain xylitol, which inhibits the growth of the bacteria that cause caries.



Containing fluoride

Proxyl RDA 83, coarse
Proxyl RDA 36, medium
Proxyl RDA 7, fine

Fluoride-free

Proxyl RDA 36, medium

Advantages:

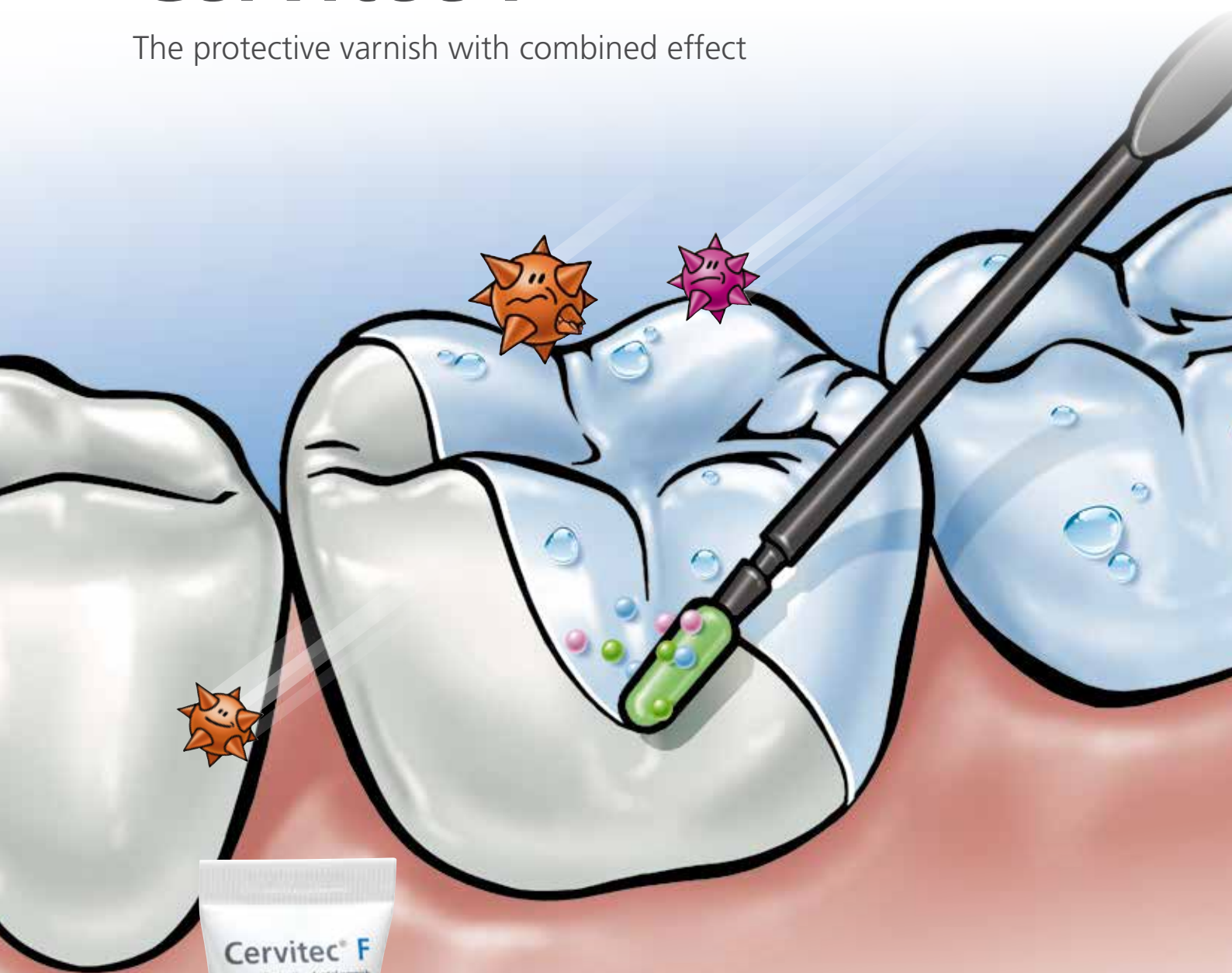
- Customized, gentle cleaning and polishing
- Scratch-free cleaning of sensitive surfaces using the fine Proxyl without pumice
- Smooth consistency, splatter-free formula
- Fresh peppermint taste

Delivery forms

Refill		
RDA 7, fine	1 x 55 ml	579866
RDA 36, medium	1 x 55 ml	579867
RDA 83, coarse	1 x 55 ml	579868
RDA 36, medium fluoride-free	1 x 55 ml	633064

Cervitec® F

The protective varnish with combined effect



Multiple
protection
in **one** step

ivoclar
vivadent
passion vision innovation

Cervitec® F

The protective varnish with 1,400 ppm fluoride, chlorhexidine and CPC (cetylpyridinium chloride) for fluoride application and germ control in one working step.



Recommended applications:

- Caries prevention in high-risk groups
- Fluoridation of dental enamel
- Remineralization of incipient lesions
- Protection of hypersensitive teeth
- Protection against bacterial activity

Advantages:

- Combined protection in high-risk cases
- Relatively high tolerance to moisture
- Mild taste
- Suitable for all age groups

Delivery forms

Refill Tube , var. accessories	1 x 7 g	665502
	2 x 7 g	665503
Refill Single Dose , var. accessories	20 x 0.26 g	665504

Cervitec® Plus

Chlorhexidine-containing protective varnish with 1% chlorhexidine plus 1% thymol for the professional bacterial control in patients with high caries risk. Cervitec® Plus also offers intensive protection in order to maintain the quality of restorations.



Indications:

- Protection of exposed root surfaces
- Treatment of hypersensitive cervicals
- Reduction of bacterial activity on tooth surfaces

Advantages:

- Sealing of exposed dentinal tubules
- Targeted treatment of particularly susceptible areas
- Long-term availability of active ingredients
- Prevention of the side effects commonly associated with chlorhexidine
- Suitable for all age groups

Delivery forms

Assortment Single Dose , var. accessories	20 x 0.25 g	602271
Assortment Tube , var. accessories	1 x 7 g	602273
Refill Tube , var. accessories	2 x 7 g	604661

Cervitec® Liquid

Alcohol-free antimicrobial mouth rinse containing 0.1% chlorhexidine and xylitol plus essential oil.



Recommended applications:

- As an intensive, temporary mouth rinse treatment
- To maintain the healthy condition of oral mucosa and gums as well as the dental supporting tissue
- Before and after implantological and periodontal interventions and dental and orthodontic surgery
- In the event of high caries risk
- In case of restricted oral hygiene ability
- To prevent halitosis

Advantages:

- Reduction of bacterial growth
- High level of compliance due to mild taste
- Suitable for patients who need to avoid alcohol

Delivery forms

Bottle	1 x 300 ml	630221
---------------	-------------------	---------------

Cervitec® Gel

Oral care gel containing 0.2% chlorhexidine, 900 ppm fluoride, provitamin D-panthenol and xylitol.



Recommended applications:

- As a concomitant measure in the prevention of diseases of the gums, oral mucous membrane and the peri-implant tissue
- As a concomitant measure in the management of inflammatory diseases such as gingivitis, mucositis, denture stomatitis, periodontitis or peri-implantitis
- In the case of elevated germ counts

Advantages:

- Provitamin D-panthenol and xylitol moisturize and soothe the gums and mucous membrane
- Smooth consistency – easy dispersion
- Mild taste

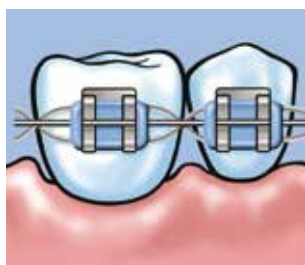
Delivery forms

Tube	1 x 50 g	683123
	1 x 20 g	683125
Denture cleaning set	1 x 20 g	681411

1 Tube, 1 storage container, var. accessories



special care of problem areas



with braces



with crowns and implants



with removable tooth replacements

Fluor Protector S

The protective fluoride varnish



Superior protection
against dental caries
and erosion


ivoclar
vivadent®
passion vision innovation

Fluor Protector S

Protective fluoride varnish for the desensitization of teeth and protection against dental caries and erosion.



Indications:

- Treatment of hypersensitive cervicals
- Build-up of acid resistance of dental enamel
- Long-term caries prevention
- Treatment of sensitivity after tooth whitening

Advantages:

- 7,700 ppm fluoride in a homogeneous solution
- Immediate fluoridation of enamel
- High-yielding fluoride depot
- Mild taste
- Suitable for all age groups

Delivery forms

Refill Tube , var. accessories	1 x 7 g	639520
	3 x 7 g	639521
Refill Single Dose , var. accessories	20 x 0.26 g	639522

Fluor Protector

Protective varnish containing fluoride for desensitization and caries prophylaxis.



Indications:

- Closing of open dentin tubules
- Prevention of demineralization
- Stimulation of remineralization
- Remineralization of incipient caries

Advantages:

- 1,000 ppm fluoride in a homogeneous solution
- Highly esthetic
- Excellent adhesion
- Suitable for all age groups
- Comprehensive clinical documentation

Delivery forms

Ampoules

Assortment , var. accessories	25 x 1 ml	533294
Refill , var. accessories	50 x 1 ml	533293

VivAmpoule

Assortment , var. accessories	20 x 0.4 ml	550578
Refill , var. accessories	40 x 0.4 ml	550579

Fluor Protector Gel

The special gel with calcium, phosphate and fluoride for intensive but gentle dental care.



Recommended applications:

- Special dental care to protect against caries, erosive wear and periodontal disease
- Sensitive teeth
- Exposed cervicals
- With acidic diets
- With dry mouth
- During orthodontic treatment
- After professional tooth cleaning
- During tooth whitening

Advantages:

- Calcium + 1450ppm fluoride + phosphate protect the teeth from acid attacks.
- Xylitol inhibits the growth of cariogenic bacteria.
- D-panthenol is soothing to the gums.

Delivery forms

Tube	1 x 20 g	628437
	1 x 50 g	628436

Helioseal®

Helioseal® F

Helioseal® Clear

Light-curing, resin-based fissure sealants for the preventive sealing of pits and fissures, using the enamel etching technique.



Helioseal®

White-shaded sealant that permits easy control during application and at recalls.

Helioseal® F

White-shaded sealant with additional fluoride release

Helioseal® Clear

Transparent sealant for excellent esthetic results and easy monitoring of fissures in case of doubt

Advantages:

- Precise application, the basis for top quality sealing results
- Well-proven in many years of clinical use
- Effective protection against caries

Delivery forms

Helioseal®

Assortment	1 x 8 g	533298
-------------------	----------------	---------------

Helioseal, Email Preparator blue, var. accessories

Refill Bottle	1 x 8 g	533297
----------------------	----------------	---------------

Helioseal® F

Assortment	5 x 1.25 g	558518
-------------------	-------------------	---------------

Helioseal F, Email Preparator blue, var. accessories

Refill Syringe	1 x 1.25 g	558519
-----------------------	-------------------	---------------

Refill Cavifils	50 x 0.1 g	543793
------------------------	-------------------	---------------

Helioseal® Clear

Assortment	5 x 1.25g	558520
-------------------	------------------	---------------

Helioseal Clear, Email Preparator blue, var. accessories

Refill Syringe	1 x 1.25 g	558521
-----------------------	-------------------	---------------

VivaSens®

Desensitizing varnish for hypersensitive teeth.



Indications:

- Hypersensitive cervicals
- Hypersensitivities due to bleaching
- Desensitization after professional tooth cleaning, scaling and root planing
- Dentin protection under restorative materials

Advantages:

- Long-term relief
- Quick to work
- Quick to use
- Gentle to gums
- Free Stand Single Dose – free-standing with grip surface

Delivery forms

Single Dose

Assortment, var. accessories	22 x 0.1 g	561958
------------------------------	------------	--------

Bottle

Assortment, var. accessories	1 x 4 g	574359
------------------------------	---------	--------

VivaStyle®

The professional system for tooth whitening, featuring carbamide peroxide or hydrogen peroxide.
The professional solution for individual needs.

Advantages:

- In-office or at-home use
- Different concentrations of the active agent
- Application:
 - Gel with custom-made tray
 - Varnish system applied with a brush



VivaStyle® Paint On Plus

A varnish system with 6% hydrogen peroxide for in-office or at-home use. Direct application with a brush – no trays required.



Indications:

- Whitening of vital and non-vital teeth

Advantages:

- Varnish system: for targeted use on the spot
- D-panthenol: provitamin
- Whitening: after just seven days
- In the dental office: intensive treatment

Delivery forms

Patient Kit	1 x 20 ml	602873
--------------------	------------------	---------------

1 Tube, 14 brushes, 14 dispensing dishes, var. accessories

VivaStyle® 10%

VivaStyle® 16%

A gel containing either 10% or 16% carbamide peroxide for at-home treatment. It is applied with a customized tray.



Indications:

- Whitening of discoloured vital or non-vital teeth

Advantages:

- Specially adjusted viscosity
- Calibrated, re-sealable syringe
- Soft and gentle tray material

Delivery forms

VivaStyle® 16 %

Patient Kit	4 x 3 ml each	646032
4 Syringes, 2 Tray Sheets, 1 Tray Case, var. accessories		

Touch Up Kit	2 x 3 ml each	646033
2 Syringes		

VivaStyle® 10 %

Patient Kit	4 x 3 ml each	645980
4 Syringes, 2 Tray Sheets, 1 Tray Case, var. accessories		

Touch Up Kit	2 x 3 ml each	646031
2 Syringes		

Tray Sheet Refill	12 x	558805
--------------------------	-------------	---------------

Skyce®

Crystal glass ornaments that are bonded to the labial surfaces of natural upper anterior teeth without previous preparation.



Skyce® is available in 2 sizes:

Approx. 1.9 mm and 2.4 mm

Shade:

Crystal

Delivery forms

Intro Pack		559320
Heliobond, Total Etch, Skyce Refill crystal small, + Refill crystal large, var. accessories		

Refill cristal small	5x	559321
Refill cristal large	5x	559322

OptraGate®

The latex-free lip and cheek retractor



Moisture control made easy

- Efficient isolation thanks to easier access
- Focused and efficient treatment procedures

Efficient
Esthetics



Isolate



Bond



Restore



Cure

ivoclar
vivadent®
passion vision innovation

OptraGate®

The **latex-free** OptraGate® lip and cheek retractor allows the treatment field to be enlarged effectively and comfortably. OptraGate retracts the lips and cheeks gently and evenly over a large area, allowing a more effective relative isolation of the treatment field. OptraGate is comfortable to wear as it is three-dimensionally flexible. The improved padding of the lip and cheek retractor as well as the recesses to accommodate the upper and lower lip frenulum increase the patient comfort – even during longer treatment sessions.

OptraGate in the sizes Regular, Small and Junior is now available in two playful colours, blue and pink. The choice of colours is particularly interesting to children and adolescents and contributes to enhancing patient compliance.

Indication:

Suitable for use in diagnostic, preventive and therapeutic dental procedures (in particular restorative procedures, cavity preparation, professional tooth cleaning, diagnostic procedures, scaling and root planing, tooth whitening, impression taking).

Advantages:

- Efficient treatment and more effective relative isolation
- Enlarged treatment field and accessibility of the cavity
- Comfortable to wear for patients

Delivery forms

OptraGate® white

Assortment		577275
OptraGate Regular, white	40 x	
OptraGate Small, white	40 x	

Refill

Regular	80 x	590850
Small	80 x	590851
Junior	80 x	591451

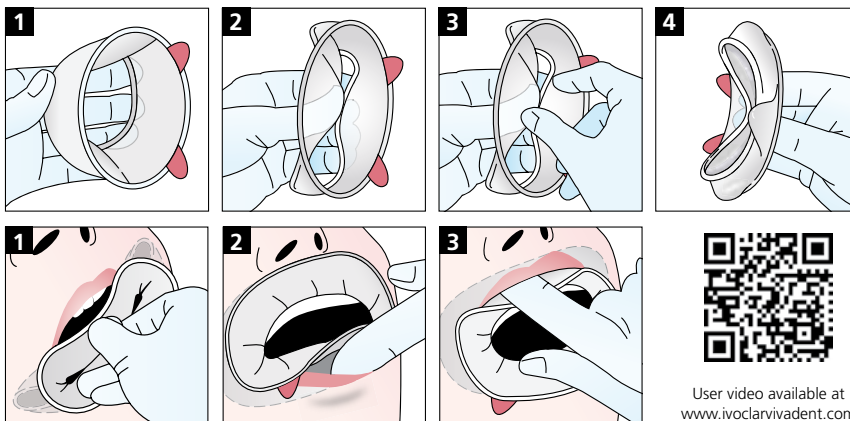
OptraGate® blau and pink

Assortment Junior/blue + pink		669089
OptraGate Junior, blue	20 x	
OptraGate Junior, pink	20 x	

Assortment Small/blue + pink		669088
OptraGate Small, blue	20 x	
OptraGate Small, pink	20 x	



(Ivoclar Vivadent AG, Liechtenstein)



User video available at
www.ivoclarvivadent.com

OptraDam® Plus

OptraDam® Plus is an anatomically shaped rubber dam for the absolute isolation of the working field. It offers the clinician increased visibility and accessibility. In addition, the device facilitates the evacuation of water spray. OptraDam Plus provides patient comfort and assists in keeping the patient's mouth open due to its three-dimensional flexibility.



(Ivoclar Vivadent AG, Liechtenstein)

Indication:

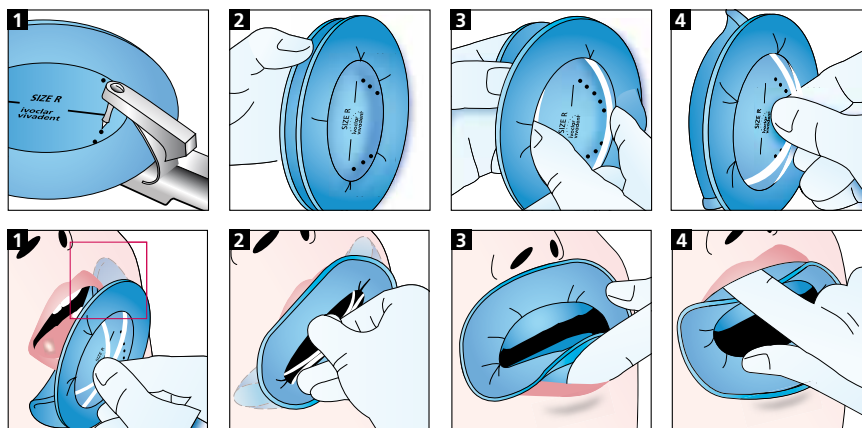
Suitable for use in therapeutic dental procedures for which an absolutely dry and isolated working field is required (e.g. for adhesive cementation, filling therapy and root canal treatments).

Advantages:

- Easy application thanks to the integrated frame and pre-printed arch template
- High patient comfort thanks to the flexible, three-dimensional design
- Simultaneous isolation of both arches thanks to the tension-free placement

Delivery forms

Assortment		627401
OptraDam Plus Regular	25x	
OptraDam Plus Small	25x	
Refill		
Regular	50x	627399
Small	50x	627400



OptraSculpt® Next Generation

OptraSculpt Next Generation is a contouring instrument for the efficient contouring of composite restorations in the posterior region. The two-components attachments produced in a special procedure facilitate the modelling of smooth and esthetic high-quality filling surfaces. The attachment shapes specifically designed for the posterior region allow for a natural-looking recreation of anatomical tooth structures such as cusp slopes, fissures and proximal margins.



Indication:

Suitable for adapting, shaping and contouring uncured sculptable composite materials. Also suitable for lab composites.

Advantages:

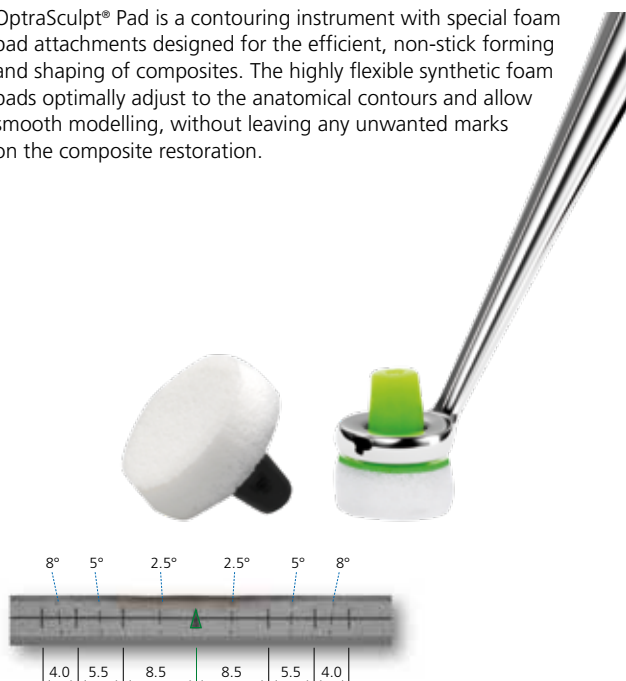
- Three attachment shapes for the professional creation of sophisticated anatomical tooth structures
- Optimum working angle for the posterior region
- Hygienic dispenser box for easy access to attachments

Delivery forms

OptraSculpt® & OptraSculpt® Pad System Kit		683066
Instrument single-ended	1 x	
Instrument double-ended	1 x	
Pads 4 mm	60 x	
Ball	20 x	
Chisel	20 x	
Point	20 x	
OptraSculpt® Starter Kit		683067
Instrument double-ended	1 x	
Ball	20 x	
Chisel	20 x	
Point	20 x	
OptraSculpt® Refill ball	60 x	683068
OptraSculpt® Refill chisel	60 x	683069
OptraSculpt® Refill point	60 x	683100
OptraSculpt® Instrument double-ended Refill	1 x	683154

OptraSculpt® Pad

OptraSculpt® Pad is a contouring instrument with special foam pad attachments designed for the efficient, non-stick forming and shaping of composites. The highly flexible synthetic foam pads optimally adjust to the anatomical contours and allow smooth modelling, without leaving any unwanted marks on the composite restoration.



Reference scale on the instrument handle:

The continuous vertical lines show ideal average widths, the dotted vertical lines average axial inclinations of the maxillary anterior teeth.

Indication:

Suitable for adapting, shaping and contouring uncured sculptable composite materials. It is also available for lab composites.

Advantages:

- Anti-stick effect: reduced adhesion of the composite to the instrument
- Professional esthetics due to homogeneous surface design and reference scales on the instrument handle
- Reduced effort required for finishing and polishing

Delivery forms

Assortment		639791
OptraSculpt Pad Instrument	1x	
OptraSculpt Pad Refill/4 mm	60x	
OptraSculpt Pad Refill/6 mm	60x	
OptraSculpt® Pad Refill/4 mm	60x	639792
OptraSculpt® Pad Refill/6 mm	60x	639793
OptraSculpt® Pad Instrument Refill	1x	646004

OptraGloss®

Efficient and advanced universal polishing system with a high concentration of diamond particles. A high-gloss finish and smooth surfaces are achieved in only one working step for composites and in only two steps for ceramics. OptraGloss polishers can be autoclaved and re-used.

Shapes:

- Flame PP
- Cup PP
- Lens PP
- Flame HP
- Cup HP
- Lens HP
- Spiral Wheel HP



Indications:

- Clinical polishing of glass-ceramic, feldspathic-ceramic and oxide-ceramic restorations
- Clinical polishing of composite resin restorations

Advantages:

- Radiant high-gloss restoration surfaces in only one step
- High wear resistance
- Autoclavable and reusable
- Two-step polishing system for ceramics

Delivery forms

Assortment		684548AN
Flame PP, Cup PP, Lens PP	2x each	
Flame HP, Cup HP, Lens HP, Spiral Wheel HP	2x each	
Ceramic Kit		684555AN
Flame PP, Cup PP, Lens PP	1x each	
Flame HP, Cup HP, Lens HP, Spiral Wheel HP	1x each	
Composite Kit		701870AN
Flame HP, Cup HP, Lens HP, Spiral Wheel HP	2x each	
Refill		
Flame PP	10x	684553AN
Cup PP	10x	684549AN
Lens PP	10x	684551AN
Flame HP	10x	684554AN
Cup HP	10x	684550AN
Lens HP	10x	684552AN
Spiral Wheel HP	10x	721094AN

Astropol®

Indication:

Astropol is indicated for the pre-polishing and polishing of restorations made of composite material and amalgam.

Astropol® F

Polishing tips (grey) for the removal of excess composite material from proximal and occlusal surfaces

Astropol® P

Polishing tips (green) for polishing composite materials

Astropol® HP

Polishing tips (pink) for final high-gloss

Shapes:

- Small flame
- Large flame
- Cup
- Disc



Delivery forms

Assortment	557625
Astropol F: Small flame, large flame, cup, disc	3x each
Astropol P: Small flame, large flame, cup, disc	2x each
Astropol HP: Small flame, large flame, cup, disc	1x each

Refill Astropol® F (grey)

Small flame	6x	557615
Large flame	6x	557616
Cup	6x	557617
Disc	6x	557618

Refill Astropol® P (green)

Small flame	6x	557614
Large flame	6x	557621
Cup	6x	557619
Disc	6x	557620

Refill Astropol® HP (pink)

Small flame	3x	557613
Large flame	3x	557622
Cup	3x	557623
Disc	3x	557624

Politip®

Multiple-use, 2-step polishing system for composites and amalgam.

Indication:

Politip® is indicated for the polishing of restorations made of composite material and amalgam.

Shapes:

- Small cup
- Large cup
- Flame



Delivery forms

Assortment Politip® Polisher (P) / Finisher (F)	551580
Finisher shapes: flame	6x
large cup, small cup	3x each
Polisher shapes: flame	6x
large cup, small cup	3x each

Refill Politip® F

Flame	6x	533602
Large cup	6x	533603
Small cup	6x	533604

Refill Politip® P

Flame	6x	533584
Large cup	6x	533585
Small cup	6x	533587

OptraStick®

OptraStick® is a flexible placement instrument which features a ball-shaped, flexible adhesive tip. The tip allows small objects, inlays, onlays and veneers (e.g. made of a IPS Empress®, IPS e.max®) to be picked up, held, carried and placed quickly and easily.

Advantages:

- Easy pick-up
- Strong adherence
- Secure positioning

**Delivery forms****Refill****48 pcs****699972AN**

Cavifil® Injector

Instrument for the application of dental restorative materials from Ivoclar Vivadent supplied in Cavifils.



Delivery forms

Refill Cavifil® Injector "New Design"	1x	627882
---------------------------------------	----	--------

VivaPad

Light-protected mixing plate for dual- and light-curing composites and adhesives.



Delivery forms

VivaPad	1x	533648
---------	----	--------

Polyart Mixing Pad

Universally usable mixing pad with 60 pages to tear off.

Size:

– Size 50 x 70mm



Delivery forms

Mixing Pad

50 x 70mm	1x	591204
-----------	----	--------

Brush Holders

This double-ended brush holder is used to hold soft and hard brushes, as well as Vivabrushes.



Delivery forms

Brush Holders

Purple	1x	538895
Red	1x	538894
Dark-orange	1x	538893
Orange	1x	538892
White	1x	573676

Brushes, hard

Disposable brushes for the application of liquid dental materials.



Delivery forms

Refill	50x	533664
--------	-----	--------

Brushes, soft

Disposable brushes for the application of low-viscosity dental materials.



Delivery forms

Refill	50x	533670
--------	-----	--------

Vivabrush

Disposable application aid for varnishes, gels, and sealants (to mount on brush holder).



Delivery forms

Refill	50x	550430
--------	-----	--------

VivaBrush G

The disposable applicator allows the application of fine, smooth layers of varnish e.g. Fluor Protector or Fluor Protector S either selectively or over larger areas.



Delivery forms

Refill	50x	631170
--------	-----	--------

Vivadent® Applicator

Disposable brushes for the activation of liquid and low-viscosity dental materials.

Available in four sizes/shapes:

- Regular (blue) for normal restorations
- Small (violet) for micro-cavities
- White
- Black



Delivery forms

Applicator		
Regular	50x	631699
Small	25x	562168
White	50x	603949
Black	50x	695128

Cannulas

Application tips for syringes and bottles.

		Delivery forms	
	Application tips Redesign ø 0.4 mm for IPS Empress Direct Color, Helioseal Clear	20x	634847
	Application tips Redesign ø 0.6 mm for Helioseal F, Total Etch	20x	634819
	Application tips Redesign ø 0.9 mm for Tetric EvoFlow, IPS Empress Direct Flow, IPS Empress Direct Opaque	20x	634849
	Application tips Redesign ø 1.2 mm for Tetric EvoFlow Bulk Fill	20x	669838
	Application tips ø 0.4 mm for Helioseal Clear	20x	556745
	Application tips ø 0.6 mm for Helioseal F	20x	579862
	Application tips ø 0.9 mm for Heliomolar Flow	20x	556744
	VivaPen Snap-on Cannulas for Adhese Universal, ExciTE F	100x	627178
		300x	627161
	Application tips for Heliobond/Helioseal bottles	20x	533669
	Application tips for Email Preparator blue	20x	533666
	Application tips ø 0.9 mm (blue) for Total Etch	20x	550587
	Application tips for Variolink II	20x	559224

Ivoclar Vivadent – worldwide

Ivoclar Vivadent AG
Bendererstrasse 2
9494 Schaan
Liechtenstein
Tel. +423 235 35 35
Fax +423 235 33 60
www.ivoclarvivadent.com

Ivoclar Vivadent Pty. Ltd.
1 – 5 Overseas Drive
P.O. Box 367
Noble Park, Vic. 3174
Australia
Tel. +61 3 9795 9599
Fax +61 3 9795 9645
www.ivoclarvivadent.com.au

Ivoclar Vivadent GmbH
Tech Gate Vienna
Donau-City-Strasse 1
1220 Wien
Austria
Tel. +43 1 263 191 10
Fax: +43 1 263 191 111
www.ivoclarvivadent.at

Ivoclar Vivadent Ltda.
Alameda Caiapós, 723
Centro Empresarial Tamboré
CEP 06460-110 Barueri – SP
Brazil
Tel. +55 11 2424 7400
www.ivoclarvivadent.com.br

Ivoclar Vivadent Inc.
1-6600 Dixie Road
Mississauga, Ontario
L5T 2Y2
Canada
Tel. +1 905 670 8499
Fax +1 905 670 3102
www.ivoclarvivadent.us

Ivoclar Vivadent Shanghai Trading Co., Ltd.
2/F Building 1, 881 Wuding Road,
Jing An District
200040 Shanghai
China
Tel. +86 21 6032 1657
Fax +86 21 6176 0968
www.ivoclarvivadent.com

Ivoclar Vivadent Marketing Ltd.
Calle 134 No. 7-B-83, Of. 520
Bogotá
Colombia
Tel. +57 1 627 3399
Fax +57 1 633 1663
www.ivoclarvivadent.co

Ivoclar Vivadent SAS
B.P. 118
74410 Saint-Jorioz
France
Tel. +33 4 50 88 64 00
Fax +33 4 50 68 91 52
www.ivoclarvivadent.fr

Ivoclar Vivadent GmbH
Dr. Adolf-Schneider-Str. 2
73479 Ellwangen, Jagst
Germany
Tel. +49 7961 889 0
Fax +49 7961 6326
www.ivoclarvivadent.de

Ivoclar Vivadent Marketing (India) Pvt. Ltd.
503/504 Raheja Plaza
15 B Shah Industrial Estate
Veera Desai Road, Andheri (West)
Mumbai, 400 053
India
Tel. +91 22 2673 0302
Fax +91 22 2673 0301
www.ivoclarvivadent.in

Ivoclar Vivadent Marketing Ltd.
The Icon
Horizon Broadway BSD
Block M5 No. 1
Kecamatan Cisauk Kelurahan Sampora
15345 Tangerang Selatan – Banten
Indonesia
Tel. +62 21 3003 2932
Fax +62 21 3003 2934
www.ivoclarvivadent.com

Ivoclar Vivadent s.r.l.
Via del Lavoro, 47
40033 Casalecchio di Reno (BO)
Italy
Tel. +39 051 6113555
Fax +39 051 6113565
www.ivoclarvivadent.it

Ivoclar Vivadent K.K.
1-28-24-4F Hongo
Bunkyo-ku
Tokyo 113-0033
Japan
Tel. +81 3 6801 1301
Fax +81 3 5844 3657
www.ivoclarvivadent.jp

Ivoclar Vivadent Ltd.
4F TAMIYA Bldg.
215 Baumoe-ro
Seocho-gu
Seoul, 06740
Republic of Korea
Tel. +82 2 536 0714
Fax +82 2 6499 0744
www.ivoclarvivadent.co.kr

Ivoclar Vivadent S.A. de C.V.
Calzada de Tlalpan 564,
Col Moderna, Del Benito Juárez
03810 México, D.F.
México
Tel. +52 (55) 50 62 10 00
Fax +52 (55) 50 62 10 29
www.ivoclarvivadent.com.mx

Ivoclar Vivadent BV
De Fruittuinen 32
2132 NZ Hoofddorp
Netherlands
Tel. +31 23 529 3791
Fax +31 23 555 4504
www.ivoclarvivadent.com

Ivoclar Vivadent Ltd.
12 Omega St, Rosedale
PO Box 303011 North Harbour
Auckland 0751
New Zealand
Tel. +64 9 914 9999
Fax +64 9 914 9990
www.ivoclarvivadent.co.nz

Ivoclar Vivadent Polska Sp. z o.o.
Al. Jana Pawła II 78
00-175 Warszawa
Poland
Tel. +48 22 635 5496
Fax +48 22 635 5469
www.ivoclarvivadent.pl

Ivoclar Vivadent LLC
Prospekt Andropova 18 korp. 6/
office 10-06
115432 Moscow
Russia
Tel. +7 499 418 0300
Fax +7 499 418 0310
www.ivoclarvivadent.ru

Ivoclar Vivadent Marketing Ltd.
Qlaya Main St.
Siricon Building No.14, 2nd Floor
Office No. 204
P.O. Box 300146
Riyadh 11372
Saudi Arabia
Tel. +966 11 293 8345
Fax +966 11 293 8344
www.ivoclarvivadent.com

Ivoclar Vivadent S.L.U.
Carretera de Fuencarral nº24
Portal 1 – Planta Baja
28108-Alcobendas (Madrid)
Spain
Tel. +34 91 375 78 20
Fax +34 91 375 78 38
www.ivoclarvivadent.es

Ivoclar Vivadent AB
Dalvägen 14
169 56 Solna
Sweden
Tel. +46 8 514 939 30
Fax +46 8 514 939 40
www.ivoclarvivadent.se

Ivoclar Vivadent Liaison Office
: Tesvikiye Mahallesi
Sakayik Sokak
Nisantas' Plaza No:38/2
Kat:5 Daire:24
34021 Sisli – Istanbul
Turkey
Tel. +90 212 343 0802
Fax +90 212 343 0842
www.ivoclarvivadent.com

Ivoclar Vivadent Limited
Compass Building
Feldspar Close
Warrens Business Park
Enderby
Leicester LE19 4SD
United Kingdom
Tel. +44 116 284 7880
Fax +44 116 284 7881
www.ivoclarvivadent.co.uk

Ivoclar Vivadent, Inc.
175 Pineview Drive
Amherst, N.Y. 14228
USA
Tel. +1 800 533 6825
Fax +1 716 691 2285
www.ivoclarvivadent.us