

# IPS e.max® Press Multi Process Overview

all ceramic  
all you need

## Wax-up, attaching/waxing to the ring base



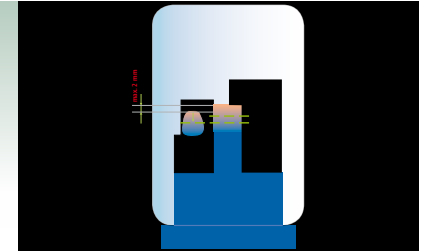
Full-contour wax-up



Attach the restoration to the IPS Multi Wax Pattern with wax



Restorations waxed to the IPS Multi investment ring base



Optional: Increase of the incisal portion

## Investing, pressing



Investing



IPS e.max Press Multi, IPS Multi One-Way Plunger

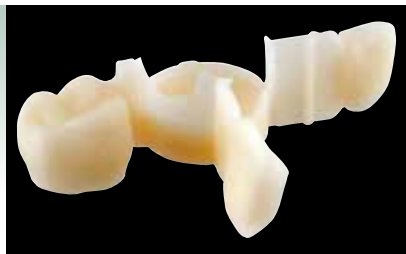


Patented "horizontal pressing" procedure



Pressing in e.g. the Programat® EP 5010 using a special program

## Divesting, glaze firing, .... done



IPS e.max Press Multi after having been divested



Stains/Glaze firing in combination with IPS e.max Ceram



Shade matching with the A-D shade guide



Completed IPS e.max Press Multi restoration

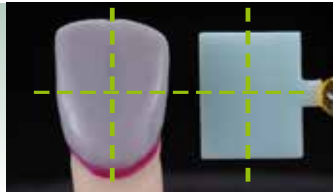


# IPS e.max® Press Multi

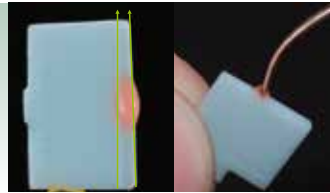
## Attaching/waxing rules

all ceramic  
all you need

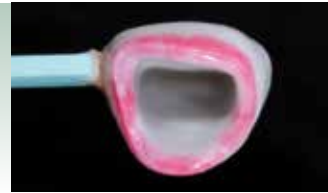
### General rules for attaching the IPS Multi Wax Pattern



Position the wax up so that its centre is aligned with that of the IPS Multi Wax Pattern.



Place IPS Multi Wax Pattern with its narrower, tapered side pointing in an occlusal/incisal direction.



The IPS Multi Wax Pattern should be aligned with the vestibular wall.



Close the gap between the wax-up and the Wax Pattern with a small amount of wax. Avoid the formation of an overly thick joining area.

### Attaching/waxing to anterior restorations



Position **IPS Multi Wax Pattern Form A**, in such a way that it "extends" the labial surface of the wax-up.



Close the gap with a small amount of wax. Avoid the formation of an overly thick joining area. Round the basal edge of the Wax Pattern, if required.

### Attaching/Waxing to anterior restorations with a delicate stump

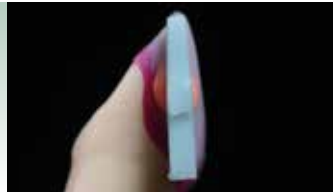


Position **IPS Multi Wax Pattern Form B**, in such a way that it "extends" the labial surface of the wax-up.



Close the gap with a small amount of wax. Avoid the formation of an overly thick joining area.

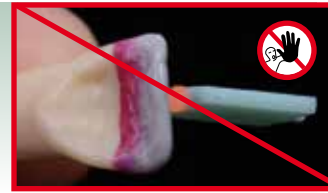
### Attaching/Waxing to veneer restorations



Position **IPS Multi Wax Pattern Form A**, in such a way that it "extends" the labial surface of the wax-up. Observe the preparation margin.

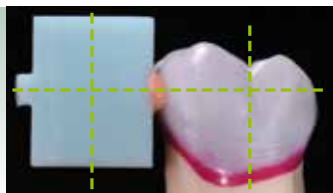


Close the gap with a small amount of wax. Avoid the formation of an overly thick joining area. Round the basal edge of the Wax Pattern, if required.



Do not attach the Wax Pattern to the labial surface of the veneer.

### Attaching/Waxing to posterior restorations



Attach the **IPS Multi Wax Pattern Form A**, to the wax-up in a central vertical position and with the tapered side towards the occlusal.



To ensure a natural shade progression on the buccal surface, position the IPS Multi Wax Pattern Form A, mesio-buccally.



Close the gap with a small amount of wax. Avoid the formation of an overly thick joining area. Round the basal edge of the Wax Pattern, if required.



For more information please refer to the Instructions for Use IPS e.max Press Monolithic Solutions.

