

# Variolink® Esthetic

The esthetic luting composite



Amazingly simple  
**esthetics**

  
**ivoclar**  
**vivadent**  
passion vision innovation

# Variolink® Esthetic

## Amazingly simple esthetics

---

Variolink® Esthetic is an esthetic light- and dual-curing luting composite for the permanent cementation of demanding ceramic and composite resin restorations.

### **Exceptional esthetics**

Balanced and concise effect shade system, paired with excellent shade stability and lifelike fluorescence

### **User-friendly processing**

Easy excess removal, in combination with a flexible, situational consistency and impressive radiodiagnostics

### **One system for clinical success**

- Establishes an optimum bond to the dental hard tissue in conjunction with Adhese® Universal
- Ideal solution for glass-ceramic restorations when used in combination with Monobond Etch & Prime®
- Universal use thanks to Monobond® Plus

### **Recognized among users and experts**

Enthusiastic users and impressed experts confirm the benefits of Variolink® Esthetic.



# 96%

satisfaction with  
Variolink® Esthetic\*

---

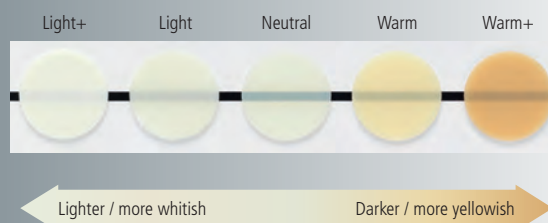


# Exceptional esthetics



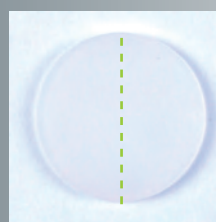
## The Effect shade concept

The balanced and concise Effect shade system allows dental professionals to match the shade effect of the restoration with that of the adjacent natural dentition. The "Neutral" shade demonstrates the highest translucency level and therefore enables a colour neutral cementation of the restoration. The shades "Light" and "Light+" produce a gradual brightening effect, whereas the shades "Warm" and "Warm+" result in the gradual darkening of the overlying ceramic and composite restoration.

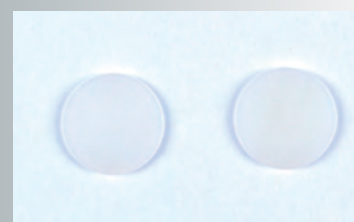


## Excellent shade stability

Variolink Esthetic demonstrates exceptional shade stability. This is made possible by the patented, reactive light initiator Ivocerin®, which is 100 per cent free of amine-based co-initiators. Variolink Esthetic forms the basis for long-lasting and reliable esthetic results. Even if exposed to intensive light or a humid environment, Variolink Esthetic is not subject to visible shade changes.



Variolink® Esthetic Suntest (acc. to ISO 4049), left side exposed to light



Variolink® Esthetic reference After immersion in water

The exceptional esthetics of Variolink Esthetic is furthermore enhanced by its lifelike fluorescence similar to that of natural teeth. Additionally, the luting composite is very resistant to wear, thus ensuring a good marginal quality of the restoration while in place.





# User-friendly processing

## Easy excess removal

Variolink Esthetic sets a new benchmark in this respect. The smart combination of the reactive light initiator Ivocerin and a light sensitivity filter allows the dental professional to more easily remove excess material after the pre-polymerization with light.

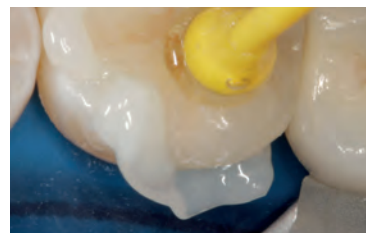


For more details watch the video:  
[www.ivoclarvivadent.com/vleien](http://www.ivoclarvivadent.com/vleien)



## Flexible, situational consistency

The viscosity controller optimally combines the material's good flow behaviour with its stability. The cement is easy to extrude from the syringe. Excess material smoothly flows from the cement gap, but remains stable at the cementation joint so that it can be readily removed.

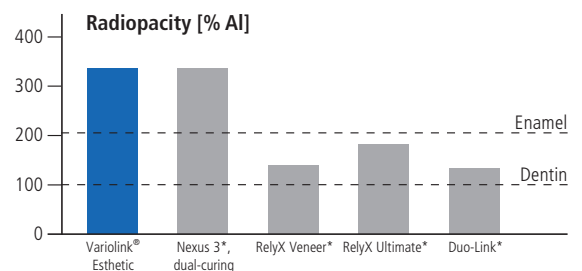


For more details watch the video:  
[www.ivoclarvivadent.com/vlewen](http://www.ivoclarvivadent.com/vlewen)



## Impressive radiodiagnostics

The high radiopacity of Variolink Esthetic makes it easier to detect excess cement and secondary caries.



\* Not registered trademarks of Ivoclar Vivadent AG.  
 Source: R&D Ivoclar Vivadent AG, Schaan, 2014 (measured according to ISO 4049).

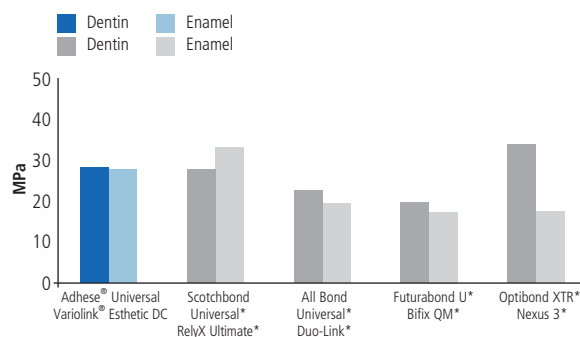
# One system for clinical success

## Optimal bonding

Adhese® Universal is a single-component, light-cured adhesive for direct and indirect bonding procedures. With its unique VivaPen® delivery form, it ideally complements Variolink Esthetic in the cementation of esthetically demanding restorations. Adhese Universal is compatible with all etching techniques and allows the clinician to flexibly respond to the clinical indication at hand. The technique- and fault-tolerant Adhese Universal ensures consistently high bond strengths and minimizes the risk of postoperative sensitivities.

Naturally, Variolink Esthetic can also be used in combination with the established adhesives Syntac® and ExcITE® F.

Shear bond strength after dual-curing – selective enamel etching on enamel and dentin after 10,000 thermocycles



<sup>1</sup> Self-etch technique, because Optibond XTR is not indicated for selective enamel etching.

\* Not registered trademarks of Ivoclar Vivadent AG.

Source: R&D Ivoclar Vivadent AG, Schaan, 2013 – 2015



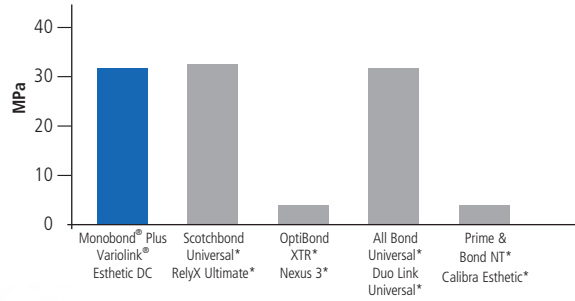
PROVEN WITH  
IPS e.max®  
ZirCAD

### Reliable bond to restoration surfaces

Variolink Esthetic produces excellent bond strength values on restorations made of zirconium oxide and glass-ceramic when used in conjunction with the innovative and clinically proven universal primer Monobond® Plus. This primer also enables users to achieve a durable bond to base metal alloys and noble metal alloys because of its patented combination of adhesive monomers.

### Durability of the bond established to zirconium oxide by different primer/bonding systems

Tensile bond strength values after 150 days of immersion in water and 37,500 thermocycles.



\* These brands are not registered trademarks of Ivoclar Vivadent AG.  
Source: Elsayed et. al.; J Adhes Dent 2017; 19: 221-228

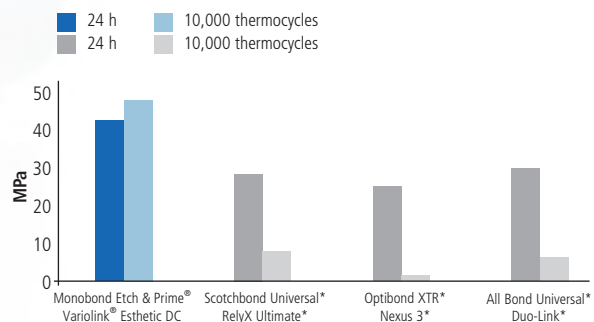


### Ideal solution for glass-ceramic restorations

Variolink Esthetic produces excellent bond strength values on restorations made of glass-ceramics, e.g. IPS e.max® CAD/Press or IPS Empress® CAD/Esthetic, when used in combination with Monobond Etch & Prime®, the world's first self-etching glass-ceramic primer. The single-component ceramic primer etches and silanates glass-ceramic surfaces in one easy step. Etching the contact surfaces with the unpopular hydrofluoric acid is no longer required.

IDEAL FOR  
IPS e.max®  
CAD/Press

### Tensile strength on the lithium-disilicate glass-ceramic IPS e.max® CAD at baseline and after ageing



\* Not registered trademarks of Ivoclar Vivadent AG.  
Source: R&D Ivoclar Vivadent AG, Schaan, 2014



# Enthusiastic Users

In a customer survey, 96% of the participants were satisfied or very satisfied with Variolink® Esthetic. The users were particularly impressed with the esthetic properties and bond strength of the luting composite. The material's consistency and ease of use also gained considerable recognition. Ninety-eight per cent of the people testing Variolink Esthetic ended up integrating it into their day-to-day practice.

How customers rated the most important product features:



Source: Ivoclar Vivadent AG, customer survey (approx. 700 participants) in Europe/USA, September 2016



# Impressed experts

---

// Variolink Esthetic is my go-to for all anterior restorative cases. The ease of handling, beautiful esthetics and predictability are the perfect complement to beautiful ceramics. //

**Dr Lee Ann Brady**  
USA



// Shade selection and stability, easy excess removal, good radiopacity, and excellent handling are characteristics I look for in a high quality ceramic resin cement. The versatility of having both a dual cure and light cure option makes Variolink Esthetic a winner for me! //

**Dr Edward Lowe**  
Canada



// Variolink Esthetic provides a simple colour matching system and the choice of dual cure or light cure for veneers. The delivery system is efficient and the initial cure is a flexible, easy to remove layer that comes away cleanly for trouble free clean-up. //

**Dr Andrea Shepperson**  
New Zealand



// Variolink Esthetic is for me the first choice for the cementation of glass ceramics! I can use the material for both light-curing and dual-curing modalities. The effect shades are logically designed. The composite offers easy processing properties with regard to both cementation and excess removal. These are decisive advantages for me. //

**Dr Jan Frydensberg-Thomsen**  
Denmark



// I use Variolink Esthetic in my practice and it has changed my life! The clean-up is easy using the initial cure - I am able to fit restorations and clean up in a fraction of the time. I like the range of shades, the handling and the flexibility of light-cured or dual-cured cements and find the application very straightforward. //

**Dr Elaine Halley**  
United Kingdom



# Manifold applications

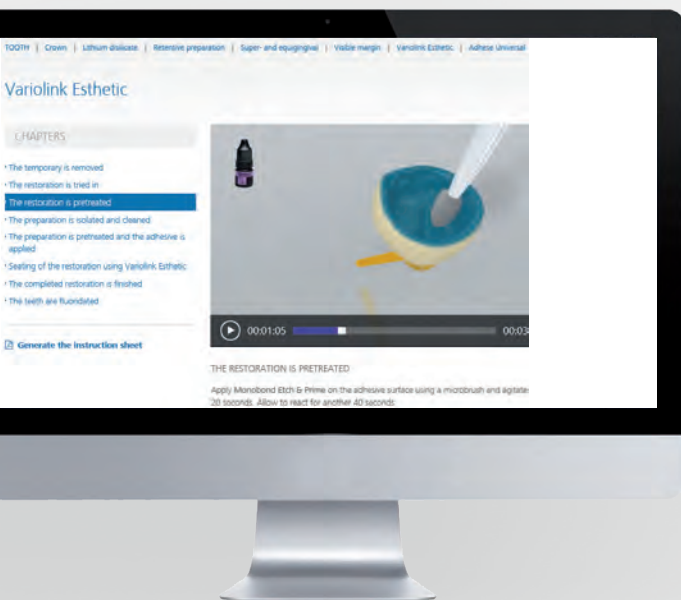
| Variolink® Esthetic   | LC<br>light-curing <sup>1</sup> | DC<br>dual-curing |
|---|---------------------------------|-------------------|
| Recommended adhesive  | Adhese® Universal               |                   |
| <b>Glass-ceramics</b><br>e.g. IPS Empress®                        |                                 |                   |
| Veneers   | ✓                               | ✓                 |
| Inlays / Onlays / Partial Crowns                                  | ✓                               | ✓                 |
| Crowns  |                                 | ✓                 |
| <b>Lithium disilicate</b><br>e.g. IPS e.max® CAD / Press          |                                 |                   |
| Veneers (occlusal veneers)  | ✓                               | ✓                 |
| Inlays / Onlays / Partial Crowns                                  | ✓                               | ✓                 |
| Crowns / Bridges  |                                 | ✓                 |
| <b>Oxide ceramics (zirconium oxide)</b><br>e.g. IPS e.max® ZirCAD |                                 |                   |
| Crowns / Bridges  |                                 | ✓                 |
| Root canal posts  |                                 |                   |

| Variolink® Esthetic                                       | LC<br>light-curing <sup>1</sup> | DC<br>dual-curing |
|---|---------------------------------|-------------------|
| Recommended adhesive                                      | Adhese® Universal               |                   |
| <b>Hybrid ceramics and composites</b><br>e.g. Tetric® CAD |                                 |                   |
| Veneers   | ✓                               | ✓                 |
| Inlays / Onlays   | ✓                               | ✓                 |
| Crowns  |                                 | ✓                 |
| Root canal posts<br>(e.g. FRC Postec® Plus)               |                                 |                   |
| <b>Metal / Metal-Supported</b>                            |                                 |                   |
| Inlays / Onlays / Partial Crowns                          |                                 | ✓                 |
| Crowns / Bridges  |                                 | ✓                 |
| Maryland bridges  |                                 | ✓                 |
| Root canal posts  |                                 |                   |

<sup>1</sup> Restorations with a layer thickness of < 2 mm and sufficient translucency

## Straightforward instructions

By means of detailed animations, the Cementation Navigation System shows in a simple and straightforward way, how Variolink Esthetic is applied in the cementation of the respective restorations.



[www.cementation-navigation.com/variolink](http://www.cementation-navigation.com/variolink)



# Delivery forms

## Variolink Esthetic LC System Kit (only light-curing)

3 syringes Variolink Esthetic LC, 2 g (light, neutral, warm)  
 3 syringes Variolink Esthetic try-in paste, 1.7 g (light, neutral, warm)  
 1 syringe Total Etch, 2 g  
 1 Adhese Universal VivaPen, 2 ml, or 1 bottle, 5 g  
 1 bottle Monobond Plus, 5 g  
 1 syringe Liquid Strip, 2.5 g  
 Various accessories

666433WW with Adhese Universal VivaPen, 2 ml

666065WW with Adhese Universal bottle, 5 g

## Variolink Esthetic DC System Kit (dual-curing)

3 automix syringes Variolink Esthetic DC, 5 g (light, neutral, warm)  
 3 syringes Variolink Esthetic try-in paste, 1.7 g (light, neutral, warm)  
 1 syringe Total Etch, 2 g  
 1 Adhese Universal VivaPen, 2 ml, or 1 bottle, 5 g  
 1 bottle Monobond Plus, 5 g  
 1 syringe Liquid Strip, 2.5 g  
 Various accessories

666434WW with Adhese Universal VivaPen, 2 ml

666125WW with Adhese Universal bottle, 5 g

## Variolink Esthetic LC System Kit IPS e.max (only light-curing)

3 syringes Variolink Esthetic LC, 2 g (light, neutral, warm)  
 3 syringes Variolink Esthetic try-in paste, 1.7 g (light, neutral, warm)  
 1 syringe Total Etch, 2 g  
 1 Adhese Universal VivaPen, 2 ml  
 1 bottle Monobond Etch & Prime, 5 g  
 1 syringe Liquid Strip, 2.5 g  
 Various accessories

681493WW

## Variolink Esthetic DC System Kit IPS e.max (dual-curing)

3 automix syringes Variolink Esthetic DC, 5 g (light, neutral, warm)  
 3 syringes Variolink Esthetic try-in paste, 1.7 g (light, neutral, warm)  
 1 syringe Total Etch, 2 g  
 1 Adhese Universal VivaPen, 2 ml  
 1 bottle Monobond Etch & Prime, 5 g  
 1 syringe Liquid Strip, 2.5 g  
 Various accessories

681492WW

## Variolink Esthetic DC Starter Kit (dual-curing)

1 automix syringe Variolink Esthetic DC, 2.5 g (neutral)  
 1 syringe Variolink Esthetic try-in paste, 1.7 g (neutral)  
 1 Adhese Universal VivaPen, 0.5 ml  
 1 bottle Monobond Etch & Prime, 1 g  
 1 syringe Liquid Strip, 2.5 g  
 Various accessories

687593WW

## Variolink Esthetic DC Starter Kit IPS e.max (dual-curing)

1 automix syringe Variolink Esthetic DC, 2.5 g (neutral)  
 1 syringes Variolink Esthetic try-in paste, 1.7 g (neutral)  
 1 Adhese Universal VivaPen, 0.5 ml  
 1 bottle Monobond Etch & Prime, 1 g  
 1 syringe Liquid Strip, 2.5 g  
 Various accessories

687592WW

## Variolink Esthetic LC Refill (only light-curing)

1 syringe, 2 g (in the selected shade)  
 5 application tips  
 666126WW Light+  
 666127WW Light  
 666128WW Neutral  
 666129WW Warm  
 666130WW Warm+

## Variolink Esthetic DC Refill (dual-curing)

1 automix syringe, 5 g (in the selected shade)  
 10 mixing tips  
 666117WW Light+  
 666118WW Light  
 666119WW Neutral  
 666120WW Warm  
 666121WW Warm+

## Variolink Esthetic DC Refill (dual-curing)

1 automix syringe, 9 g (in the selected shade)  
 15 mixing tips  
 666122WW Light  
 666123WW Neutral  
 666124WW Warm

## Variolink Esthetic DC, Refill incl. 3 syringes (dual-curing)

3 automix syringes, 9 g (in the selected shade)  
 45 mixing tips  
 692424WW Light  
 692425WW Neutral  
 692426WW Warm  
 716646WW Neutral (2x) and Warm (1x)

## Variolink Esthetic Try-In Paste Refill

1 syringe, 1.7 g (in the selected shade)  
 5 application tips  
 666067WW Light+  
 666113WW Light  
 666114WW Neutral  
 666115WW Warm  
 666116WW Warm+

## Accessories

645951 mixing tips, short, pointed, refill, 15 units  
 559224 Variolink application tips, refill, 20 units



**Ivoclar Vivadent AG**  
Bendererstr. 2  
9494 Schaan  
Liechtenstein  
Tel. +423 235 35 35  
Fax +423 235 33 60  
[www.ivoclarvivadent.com](http://www.ivoclarvivadent.com)

673400/en/2020-01



**ivoclar**  
**vivadent**<sup>®</sup>  
passion vision innovation