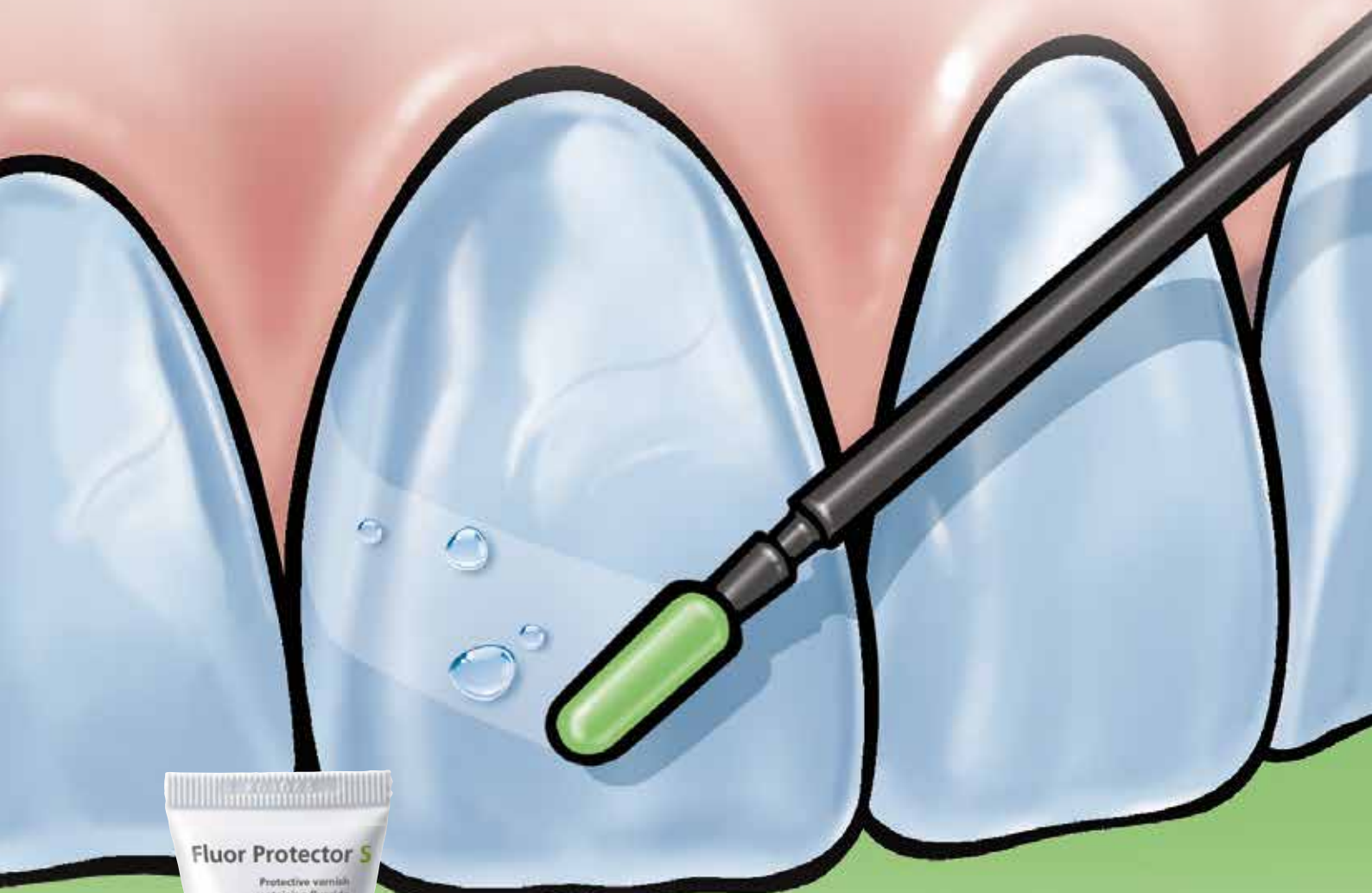


# Fluor Protector S

The protective fluoride varnish



Superior protection  
against dental caries  
and erosion

  
**ivoclar**  
**vivadent**<sup>®</sup>  
passion vision innovation

# Fluor Protector S

The strong fluoride varnish

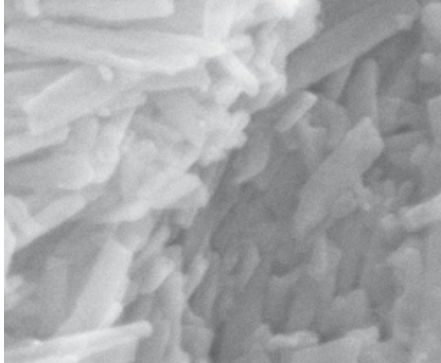
In order to stay healthy and look good, teeth need to be supplied with fluoride throughout their lifetime. In many cases, using toothpaste alone is not enough and additional amounts of fluoride have to be administered using other means. The local application of a fluoride varnish is the professional method of choice. Dental organizations emphatically recommend this measure.

## Decades of expertise

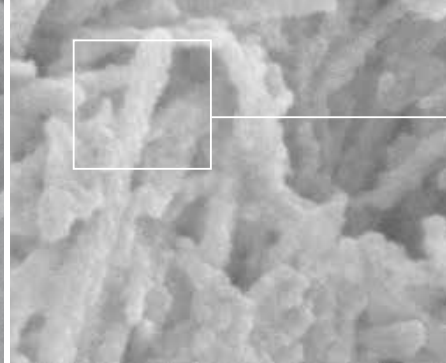
The fluoride varnish Fluor Protector S has been developed by Ivoclar Vivadent, a leading international manufacturer of dental varnishes. The sophisticated and innovative varnish technology is based on decades of expertise. The company works closely with dentists and their teams to respond to their demands and those of their patients. In the process, nothing is left to chance. Preparations like Fluor Protector S fluoride varnish enhance the service offerings of dental practices and help to develop them for the future.



Fluor Protector S  
Homogeneous **protective** varnish  
in a dispensing tube



Demineralized dental enamel without fluoride varnish treatment



Densely packed calcium fluoride-like particles after the application of Fluor Protector S, Scanning electron micrographs, magnification: 30'000 x (Ivoclar Vivadent, R&D 2012)



### Comprehensive protection

The fluoride varnish blocks exposed cervicals and protects them from sensitivity. The uncomfortable sensations produced by hot and cold stimuli are reduced. Fluor Protector S is used to

- ▶ treat hypersensitive teeth
- ▶ increase the acid resistance of dental enamel
- ▶ get long-term caries prevention
- ▶ round off professional tooth cleaning
- ▶ reduce sensitivity after tooth-whitening procedures

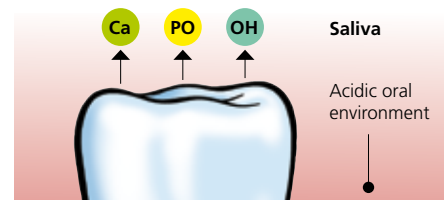
### Immediate fluoridation of enamel

The innovative varnish system featuring a homogeneously dissolved fluoride source ensures immediate availability of fluoride. The entire dose of fluoride contained in Fluor Protector S is available in a very short time. As a result, dental enamel is directly and effectively supplied with fluoride.



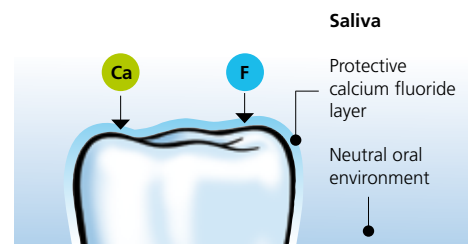
### High-yielding fluoride depot

After the application of Fluor Protector S, finely distributed calcium fluoride particles form on the teeth. During acid attacks, these particles break down into calcium and fluoride. The dense covering layer acts as a high-yield depot from which fluoride and calcium are released over an extended period of time. Consequently, the acids cannot directly attack the enamel and dentin.

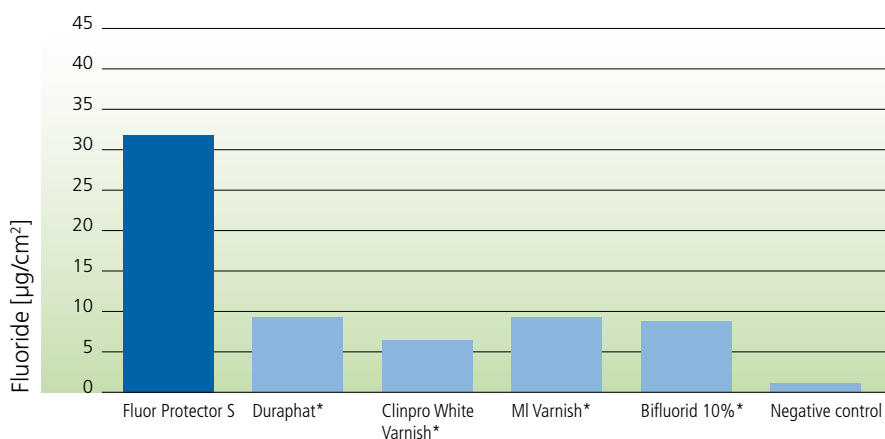


### Without Fluor Protector S

In the acidic environment of the mouth, calcium (Ca), phosphate (PO) and hydroxyl (OH) ions dissolve from the tooth structure, thereby weakening the teeth.



### Focus on topical fluoride application

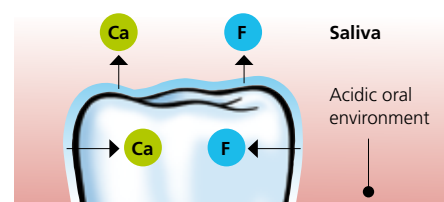


\*Not a registered trade mark of Ivoclar Vivadent AG

Alkaline-soluble fluoride on the enamel surface one hour after the application of various fluoride varnishes (Ivoclar Vivadent, R&D 2011)

### After the application of Fluor Protector S

Fluoride and calcium combine to form a protective coating.



### Coating with depot effect

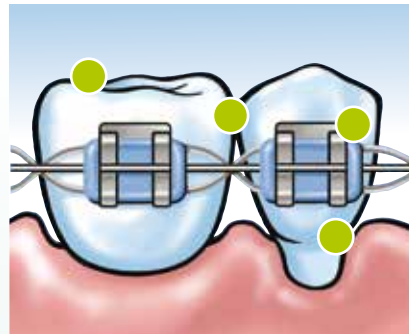
In an acidic environment, calcium and fluoride dissolve from the covering layer and penetrate into the saliva and enamel. As a result, the teeth are no longer under direct attack by acids.

# Fluor Protector S

Homogeneous varnish in a dispensing tube

## Low viscosity for complex surfaces

The low viscosity of Fluor Protector S is responsible for its optimum flow and wetting properties. In contrast to thick, viscous fluoride varnishes, Fluor Protector S is easy to distribute. Furthermore, it readily flows into complex surface structures.



Susceptible areas such as

- ▶ exposed cervicals
- ▶ fissures
- ▶ proximal surfaces
- ▶ the areas around brackets and bands
- ▶ filling and crown margins
- ▶ and porous tooth surfaces

obtain the fluoride they require and get superior protection.

## Homogeneous solution

Fluor Protector S contains fluoride in a homogeneous solution. This offers significant advantages compared with inhomogeneous preparations.

Fluor Protector S

- ▶ is ready for immediate application
- ▶ contains evenly distributed fluoride
- ▶ allows controlled fluoride application
- ▶ adheres well.

## For children and adults

Fluor Protector S is suitable for treating children, adolescents and adults. Due to its concentration and mild taste, the product can even be used to treat pre-school children. The fast and easy application is well accepted by children.

Compared with inhomogeneous preparations that have to be mixed before use, Fluor Protector S features a consistent and controlled concentration of components. Fluor Protector S is ready for direct application and can therefore be used immediately.

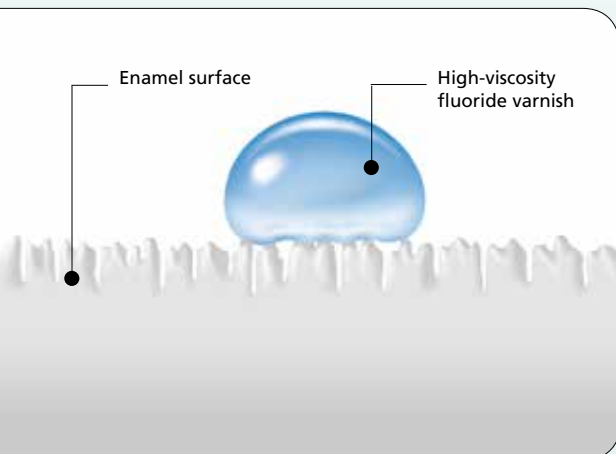
## Priorities of patients

- ▶ Pleasant taste
- ▶ Fast, painless treatment
- ▶ Clinically proven method

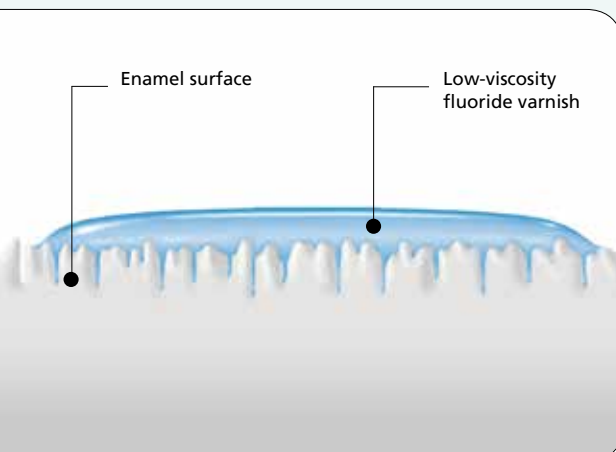
## Your benefits

- ▶ Highly effective fluoride varnish
- ▶ Fast treatment
- ▶ Solution for individual requirements

A **high-viscosity** fluoride varnish sits on the surface.



A **low-viscosity** fluoride varnish such as **Fluor Protector S** spreads easily and penetrates into porous surfaces.







Beautiful teeth with Fluor Protector S  
(Picture: Dr L. Enggist)

Fluor Protector S adapts to the tooth colour.

Comparable varnish

### User-friendly delivery forms

The innovative multi-dose tube allows Fluor Protector S to be dispensed in the desired quantity quickly, easily, hygienically and economically. Alternatively, the product is supplied in free-standing, individual single-dose units.



Fluor Protector S, precise dispensing



Fluor Protector S in the free-standing single-dose unit

Features	Benefits
7700 ppm fluoride in a homogeneous solution; approx. 4-times higher concentration after setting	<ul style="list-style-type: none"> <li>▶ Immediately ready for use</li> <li>▶ Controlled fluoride application</li> <li>▶ Immediate availability of fluoride</li> </ul>
Optimum flow and wetting properties	Improved treatment of difficult-to-reach risk areas
Mild taste and smell	<ul style="list-style-type: none"> <li>▶ Recommended for sensitive patients</li> <li>▶ High acceptance by children</li> </ul>
Easy application	Fast treatment under field conditions
Compatible with tooth-whitening products	Reduction of potential hypersensitivity after tooth-whitening procedures
Multi-dose and single-dose units	<ul style="list-style-type: none"> <li>▶ High-yielding dispensing tube</li> <li>▶ Individual single-dose units</li> </ul>



### Adapted to the tooth colour

Fluor Protector S can be applied in a fine, smooth layer. The clear colourless varnish sets quickly. In contrast to some other varnishes, it adjusts well to the natural tooth colour.

# Fluor Protector Gel

Special dental care in the practice and at home

## The protective formula of "calcium plus fluoride plus phosphate"

Fluor Protector Gel contains fluoride as well as calcium and phosphate. These ingredients protect teeth and repair and strengthen affected tooth structure. Xylitol inhibits the growth of cariogenic bacteria. The provitamin D-panthenol is soothing to the gums and mucous membrane, which benefits the general health of teeth and the oral cavity. Fluor Protector Gel strengthens the teeth and protects them against acid attacks.

## Special care for special needs

Fluor Protector Gel is designed to protect against dental caries, tooth erosion and periodontal disease. The gel is particularly suitable for patients

- ▶ with sensitive teeth
- ▶ with exposed cervicals
- ▶ who consume acid foods
- ▶ who have a dry mouth
- ▶ who are undergoing orthodontic treatment
- ▶ with a high caries risk
- ▶ who have had their teeth professionally cleaned
- ▶ with sensitive peri-implant tissue
- ▶ who are having their teeth whitened.

When used at home, Fluor Protector Gel supplements the professionally applied protective varnish Fluor Protector S.





### Individualized application

The gel is applied according to the individual requirements:

- ▶ instead of toothpaste to clean teeth
- ▶ on a toothbrush in the evening after toothbrushing
- ▶ with an interdental brush
- ▶ with a tray

### Your benefits

- ▶ Professional recommendation for patients
- ▶ Special care for patients with problem areas
- ▶ Reinforcement of the professional treatment success

### Priorities of patients

- ▶ Overall protection of worn teeth
- ▶ Perceptibly smoother teeth and a good feeling in the mouth
- ▶ Easy integration into the daily routine

### Fluor Protector S delivery forms



**Refill**  
20 single-dose units,  
0.26 g each, accessories



**Refill**  
1 dispensing tube,  
7 g, accessories



**Refill**  
3 dispensing tubes,  
7 g each, accessories

### Fluor Protector Gel delivery forms



**Tube**  
Fluor Protector Gel, 20 g

**Tube**  
Fluor Protector Gel, 50 g

Features	Benefits
Calcium plus 1450 ppm fluoride plus phosphate	Protects the teeth against acid attacks
Xylitol	Inhibits the growth of cariogenic bacteria
Provitamin D-panthenol	Soothing to gum tissue
Neutral pH	Particularly suitable in the case of erosion
Smooth consistency	Optimum distribution on complex problem areas
Low abrasion	Gentle to worn tooth structure and to restorations and sensitive soft tissue
Low foam formation	More sustained use
Soft mint taste	Good feeling in the mouth

Fast assessment	Customized treatment
The coordinated Professional Care product range facilitates the assessment of the treatment required by the individual patient, and it allows combined measures to be taken successfully.	
<b>CRT® bacteria</b> The test for determining mutans streptococci and lactobacilli counts in saliva	<b>Proxyt®</b> The prophylaxis pastes
<b>CRT® buffer</b> The test for determining the buffer capacity of saliva	<b>Cervitec®</b> The protective varnish, oral health care gel and mouth rinse containing chlorhexidine and more
<b>Plaque Test</b> The fluorescent disclosing liquid for detecting plaque	<b>Helioseal®</b> The fissure sealants
	<b>OptraGate®</b> The soft lip and cheek retractor

Literature	
Bolis C, Ulke D, Lendenmann U: In-vitro fluoride release and enamel fluoridation of fluoride varnishes. CED-IADR 2011	Fischer K: Scientific Documentation Fluor Protector Gel. Ivoclar Vivadent 2010
Fischer K: Scientific Documentation Fluor Protector S. Ivoclar Vivadent 2013	Marinho VCC, Higgins JPT, Logan S, Sheiham A: Fluoride varnishes for preventing dental caries in children and adolescents (review). The Cochrane Library Issue 2006; 1: 1-31



## Direct Restoratives

Fluor Protector S forms a part of the "Direct Restoratives" product category. The products of this category cover the procedure involved in the direct restoration of teeth – from preparation to restoration care. The products are optimally coordinated with each other and enable successful processing and application.



### THESE ARE FURTHER PRODUCTS OF THIS CATEGORY:

#### Tetric EvoCeram® Bulk Fill

The bulk-fill composite



Posterior efficiency, zero compromise

- Fill with up to 4 mm bulk increments due to Ivocerin®, the patented light initiator
- Sculpt and contour with ease as a result of the material's smooth consistency
- Then light-cure ... and the esthetic restoration is done!

#### Bluephase® Style

The curing light



The smallest LED for every use

- Every hand – comfortable to hold for men and women
- Every material – universal use due to Polywave® LED with broadband spectrum
- Every time – optional corded operation due to Click & Cure

Would you like to know more about the products of the "Direct Restoratives" category? Simply get in touch with your contact person at Ivoclar Vivadent or visit [www.ivoclarvivadent.com](http://www.ivoclarvivadent.com) for more information.