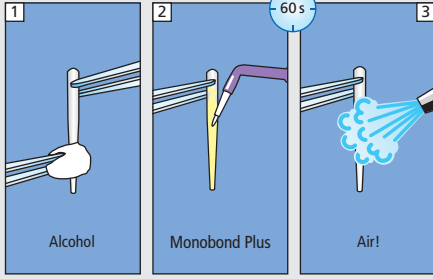


Multilink® Automix

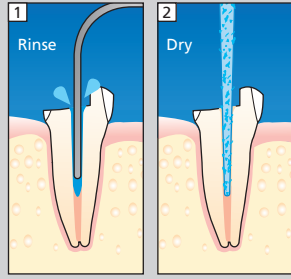
Cementation of root posts (FRC, Ceramic, Metal)

Root Post

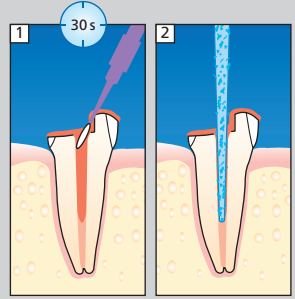
Pre-treatment according to manufacturer's instructions.



Preparation

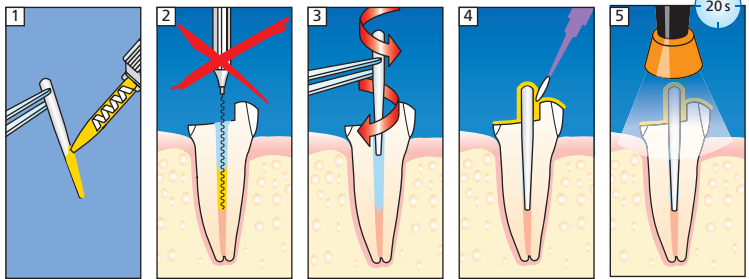


Mix Multilink Primer A+B 1:1



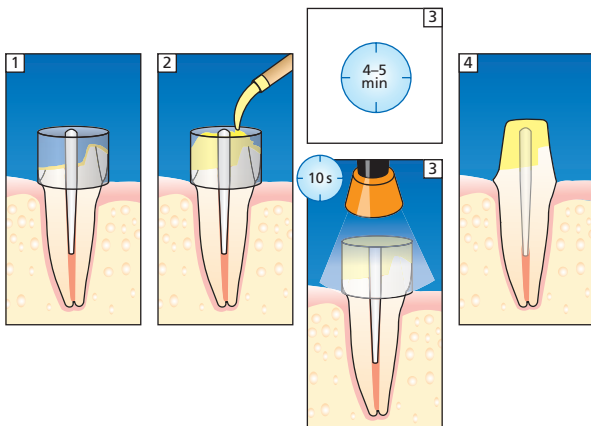
Cementation

Multilink Automix



Core build-up

MultiCore Flow



more information
www.cementation-navigation.com

CE 0123



Please read
Instructions for Use

ivoclar
vivadent
clinical

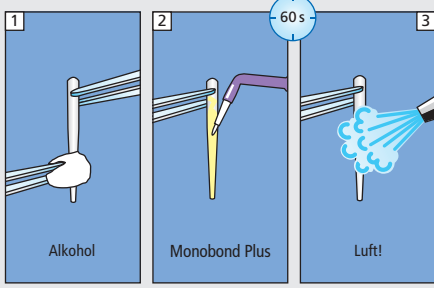
Multilink® Automix

Befestigung von Wurzelstiften

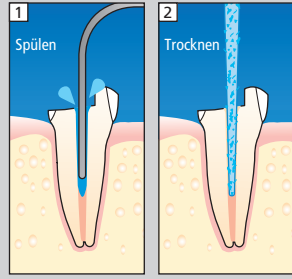
(aus glasfaserverstärktem Composite, Keramik, Metall)

Wurzelstift

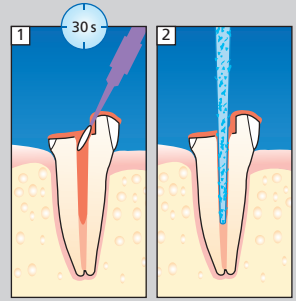
Vorbehandlung gemäss Herstellerangaben



Präparation

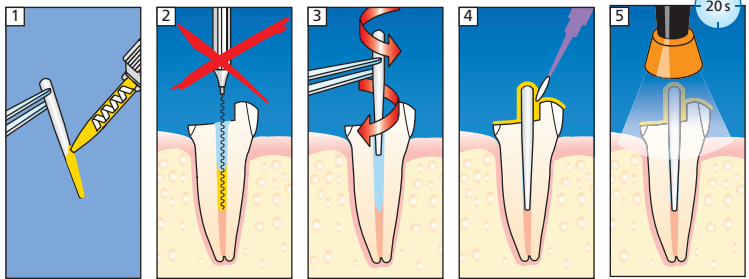


Multilink Primer A+B
1:1 mischen



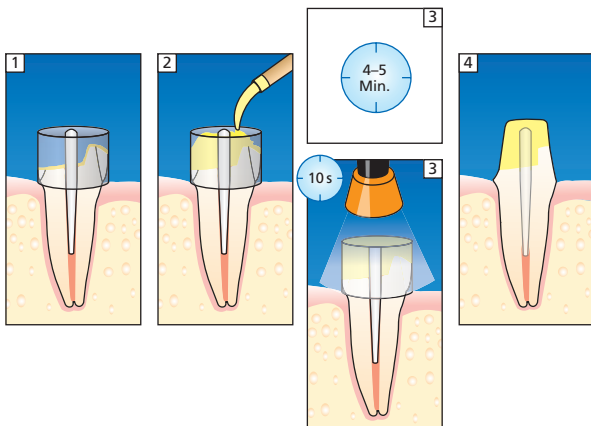
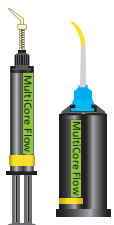
Zementierung

Multilink Automix



Stumpfaufbau

MultiCore Flow



Mehr Informationen unter
www.cementation-navigation.com

CE 0123



Bitte lesen Sie die
Gebrauchsinformation

ivoclar
vivadent
clinical

Erstellungsdatum: 2016-03-15
645943/Rev.1