

# Professional Care Program

*Oral Health Management*

*A system of solutions*



# Ivoclar Vivadent®

## Oral Health Management

*Strong and healthy teeth and healthy gums for a lifetime: This is the goal to which dental practitioners and their teams aspire and it is the dream of patients.*

### Oral Health Management

Healthy teeth should stay healthy. Restored teeth and denture teeth should receive the care they need. Oral health is vital to the overall health, personal development and well-being of everyone. Therefore, the need for professional and customized Oral Health Management solutions for patients of all ages is growing. The focus is on prevention, minimally invasive therapy and care.

The quality products and services from Ivoclar Vivadent enable dental professionals to implement their treatment strategies safely, successfully and effectively. A coordinated product range composed of strong individual products offers the possibility of providing patients with customized Oral Health Management measures. The Professional Care products help to maintain all teeth, be they natural, restored or artificial, in good condition.

### Needs-driven programs

Professional Care products and other products and specialized services from Ivoclar Vivadent are available in different programs that are specifically geared to the treatment needs of different target groups.

### Full expertise

Recent international studies have intensively examined the importance of Professional Care products that cater to different patient groups. It has been shown that these products are a standard component of the product portfolio of many dental practices. Information about the benefits of the products and special tips regarding their application are supplied in the communication materials provided for the different target groups. This information helps to inform and treat patients appropriately.



### The programs

i-Kids®  
Ortho Care  
Implant Care  
Senior Care

### The patients

Children and adolescents  
Orthodontic patients  
Implant patients  
Seniors

# Contents

- *Healthy mouth*
- *Healthy teeth*
- *Healthy gums*

Ivoclar Vivadent offers a system of professional solutions.

4	<b>OptraGate®</b> For a full view
5	<b>Plaque Test</b> Focus on biofilm
6	<b>Proxyt®</b> Gentle removal of bacterial biofilms
8	<b>Fluor Protector</b> Superior protection against dental caries and erosion
10	<b>Cervitec®</b> Targeted protection for at-risk areas
12	<b>Helioseal®</b> Fissure sealants with power
14	<b>VivaSens®</b> Multiple protection for sensitive teeth
15	<b>Skyce®</b> A touch of glamour
16	<b>VivaStyle®</b> Serious whitening
18	<b>Ivoclar Vivadent®</b> Services
19	<b>References</b> Cervitec® Plus





# OptraGate®

For a full view



*A full view of the working area saves treatment time and heightens the safety of dental procedures.*

*The latex-free lip and cheek retractor OptraGate® retracts the lips and cheeks around the entire circumference of the mouth.*

*The oral cavity and the teeth are easy to reach.*

## Invaluable auxiliary

OptraGate provides unhindered access to the oral cavity and enables dental professionals to work efficiently, knowing that their patients are comfortable during the following procedures:

- ▶ dental examination
- ▶ application of Plaque Test
- ▶ professional cleaning and polishing of the teeth
- ▶ fissure sealing
- ▶ application of protective varnishes
- ▶ tooth whitening.

This is beneficial for everyone involved.

## Special tip

- ▶ OptraGate facilitates in-office tooth whitening procedures with the VivaStyle® Paint On Plus bleaching varnish.

## Benefits for the dental team

- ▶ Improved access to the oral cavity and teeth
- ▶ Efficient treatment
- ▶ Wide range of applications

## Benefits for patients

- ▶ Latex-free
- ▶ Comfortable retraction of the lips and cheeks
- ▶ Fast treatment

## Practical evidence

- ▶ OptraGate is mostly used in bleaching procedures, the placement of highly esthetic anterior fillings and in professional tooth cleaning measures (Survey taken by Ivoclar Vivadent in 2006).



## OptraGate® – the comfortable lip and cheek retractor

### Advantages

- Three-dimensional flexibility
- Recesses for the lip frenula
- Available in different sizes

### Benefits

- Keeping the mouth open is easy
- High level of comfort for patients
- Individualized fit

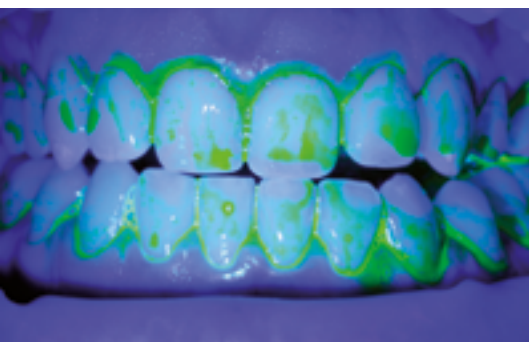
# Plaque Test

*Focus on biofilm*



*Bacterial biofilm promotes the development of not only dental caries, but also of periodontal and periimplant diseases, gravely endangering the health of teeth and gums.*

*Plaque Test renders the biofilm fluorescent and visible.*



## Problem areas

Plaque accumulates generally in areas that are difficult to clean. This problem, which affects the teeth and gums, is not easy to detect for the untrained eye. Modern tooth replacements such as implants require optimal oral hygiene practices to ensure their longevity. The success of the at-home measures is dependent on the instructions and assistance received from the dental practice.

## Plaque Test – revealing the biofilm

Plaque Test is used to selectively colour bacterial biofilm and make it visible. The fluorescent pigment does not react with teeth, soft tissue and restorations. Only the plaque-coated areas glow under the light of a curing unit, for example Bluephase® from Ivoclar Vivadent. The stained plaque makes it easier for the dental team to instruct patients on where and how to clean their teeth. This method is also used to determine the plaque indices and check the result of professional tooth cleaning measures.

## Plaque Test – the fluorescent disclosing liquid

### Advantages

- Selective application
- Only the biofilm glows
- Fluorescent under any curing light

## Special tip

- ▶ Bacterial biofilm can be selectively and gently removed with Proxyt® pastes, which are specially formulated for the professional cleaning and polishing of teeth. The OptraGate® lip and cheek retractor facilitates access to tooth surfaces.

## Benefits for the dental team

- ▶ Comprehensive diagnostics
- ▶ Individualized recall intervals
- ▶ Risk-based treatment

## Benefits for patients

- ▶ Customized care
- ▶ Early detection
- ▶ Long-term preservation of teeth

## The scientific basis

- ▶ Caries and periodontal diseases are closely associated with bacterial biofilm (Marsh et al. 2015).

### Benefits

- No unsightly staining of the tongue, gums and mucous membrane
- Clear examination results
- Easy to integrate into routine procedures

# Proxyt®

## Gentle removal of bacterial biofilm

*Systematic professional cleaning and polishing of teeth, restorations and implants is essential in the prevention of caries, periodontal and periimplant diseases. Apart from the oral health benefits, professional tooth cleaning promotes "white" and "pink" esthetics. The teeth and gums simply look good.*

### Focus on individual needs

Proxyt® pastes clean effectively and gently. Unnecessary wear of tooth structure or roughening of restoration surfaces is avoided. The Proxyt pastes are available in three different abrasion levels:



### With fluoride **Proxyt fine**



### **Proxyt medium**



### **Proxyt coarse**



### Fluoride-free **Proxyt medium**



Picture: Dr L. Enggist, Ivoclar Vivadent AG, Schaan, Liechtenstein





Taking gentle care of esthetic IPS e.max® Press restorations  
Picture: Dr L. Enggist, Ivoclar Vivadent AG, Schaan, Liechtenstein



Excellent "pink" and "white" esthetics  
Picture: Dr L. Enggist, Ivoclar Vivadent AG, Schaan, Liechtenstein

### High-quality restorations maintain their lustre

In addition to hard and healthy dental enamel, significantly less resistant dentin and filling materials need to be cleaned. The use of harsh agents must be avoided, as they make surfaces look dull. Only smooth surfaces maintain their natural gloss. The fine Proxyt paste, which is free of pumice, is designed for cleaning and polishing high-quality surfaces. The paste cleans restorations and implants without scratching and leaves them looking beautiful and shiny.

### Accentuating esthetics

Professional cleaning with the fine Proxyt paste brings out the best in quality ceramic restorations: They maintain their natural lustre and healthy gums enhance the overall appearance.

### Protecting sensitive tissue

Periimplant tissue is much more sensitive than gingival tissue. Therefore, implant-supported restorations must be cleaned very gently with the fine Proxyt paste and soft rubber cups or brushes. Since implant patients need to have their teeth cleaned professionally on a regular basis for the rest of their life, this procedure should be as effective and gentle as possible.

### Special tip

- ▶ Bacterial biofilm can be made visible by staining it with the fluorescent disclosing liquid Plaque Test.

### Benefits for the dental team

- ▶ Long-term gentle quality assurance
- ▶ Well-being of patients
- ▶ High level of patient loyalty

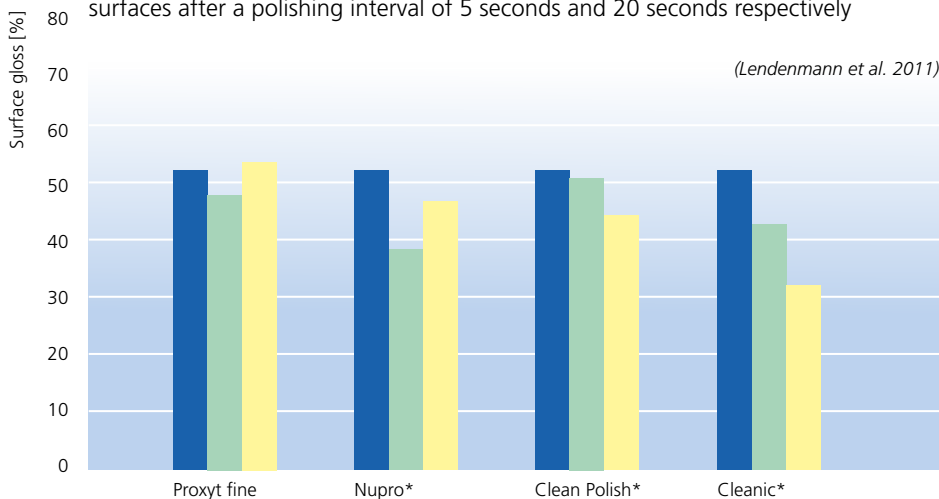
### Benefits for patients

- ▶ Well-being
- ▶ Perceptibly smooth teeth
- ▶ Long-term beautiful teeth

### The scientific basis

- ▶ In contrast to several other prophy pastes, the fine version of Proxyt maintains the smoothness of ceramic surfaces (Yazici et al. 2012).

Effects of various fine prophy pastes on nano-hybrid composite resin surfaces after a polishing interval of 5 seconds and 20 seconds respectively



\*) Not a registered trademark of Ivoclar Vivadent AG  
Source: R&D Ivoclar Vivadent AG, Schaan, 2011

Picture: Dr R. Watzke, Ivoclar Vivadent AG, Schaan, Liechtenstein



### Proxyt® – the prophy pastes

#### Advantages

- Different abrasion values
- Xylitol
- Smooth consistency

#### Benefits

- Needs-oriented, gentle and effective cleaning and polishing
- Interruption of the bacterial metabolism
- Good adhesion to teeth and instruments



# Fluor Protector

*Superior protection against dental caries and erosion*

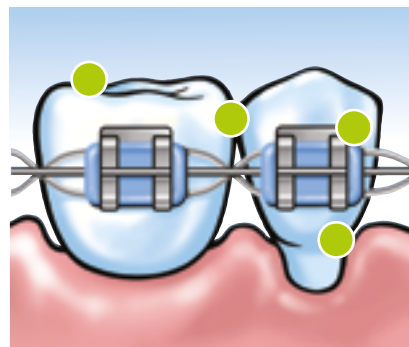
*In order to stay healthy and strong, teeth need to be supplied with fluoride throughout their lifetime.*

*In many cases, using a fluoride-containing toothpaste alone is not enough and additional treatment with fluoride is necessary. The professional application of a fluoride varnish is emphatically recommended by dental organizations.*

## Comprehensive protection

The fluoride varnishes Fluor Protector and Fluor Protector S allow teeth to be professionally protected from:

- ▶ hypersensitivity
- ▶ caries
- ▶ erosion.



## Protection of problem areas

The low viscosity of Fluor Protector and Fluor Protector S ensures good flow and wetting properties. The varnishes spread easily and readily flow into complex surface structures. Problem areas such as

- ▶ exposed cervicals
- ▶ fissures
- ▶ proximal surfaces
- ▶ surfaces around brackets and bands
- ▶ filling and crown margins
- ▶ porous tooth surfaces

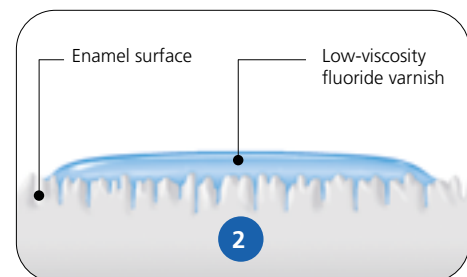
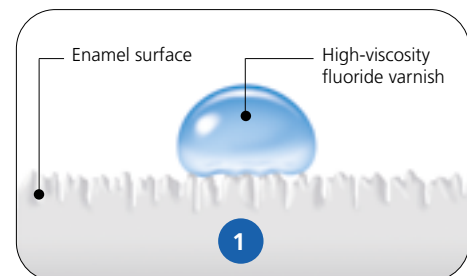
receive the required amount of fluoride and protection.

## For different age groups

Fluor Protector and Fluor Protector S are suitable for treating children, adolescents and adults. Due to their concentration, they are also suitable for treating pre-school children. The varnishes have been successfully tested under field conditions.

## For individual needs

Fluor Protector and Fluor Protector S differ in their composition, fluoride concentration and delivery form. The at-home application of Fluor Protector Gel enhances the effect of professionally applied protective varnishes.



**1** Highly viscous fluoride varnishes sit on the tooth surface.

**2** The low-viscosity fluoride varnish spreads easily and readily penetrates into porous surfaces.







### Fluor Protector – the fluoride varnish with decades of experience

#### Advantages

1,000 ppm fluoride in a homogeneous solution;  
fluoride source: difluorsilane

Decades of experience

Clear, colourless

#### Benefits

For different age groups

Long-term clinical success

Optimum esthetics

### Fluor Protector S – the fluoride varnish in a dispensing tube

#### Advantages

7,700 ppm fluoride in a homogeneous solution;  
fluoride source: ammonium fluoride

Mild taste and smell

Dispensing tube or Single Dose units

#### Benefits

Ready for immediate use

Recommended for sensitive patients

Efficient or individualized

### Fluor Protector Gel – the intensive care gel

#### Advantages

Calcium plus 1,450 ppm fluoride plus phosphate;  
fluoride source: potassium fluoride

Xylitol

Provitamin D-Panthenol

#### Benefits

Comprehensive protection for teeth

Interruption of the bacterial metabolism

Conditioning of gingival tissue

### Special tip

- ▶ Fluor Protector Gel can be used after professional tooth cleaning as alternative to a fluoride varnish.

### Benefits for the dental team

- ▶ Highly effective fluoride varnishes and intensive care gel
- ▶ Solutions for individual needs
- ▶ Fast treatment

### Benefits for patients

- ▶ Fast, comfortable treatment
- ▶ Clinically proven method
- ▶ Long-term beautiful teeth

### The scientific basis

- ▶ The routine application of a fluoride varnish during the treatment with fixed orthodontic appliances may reduce the development of white-spot lesions in the vicinity of brackets (Stecksén-Blicks et al. 2007).
- ▶ Fluor Protector Gel may protect dental enamel against demineralization (Ziebolz et al. 2010).



# Cervitec®

*Targeted protection for at-risk areas*



*Standard oral hygiene measures and professional tooth cleaning and fluoridation are not adequate to protect the teeth from harm in patients with high bacteria counts. In these cases, it is necessary to selectively reduce the number of relevant germs.*

## Protection and oral care

A very high number of certain germs in the mouth compromises the health of the teeth, gums and mucous membrane. Furthermore, the condition of implants, dentures and restorations is also placed at risk. The chlorhexidine-containing protective varnish Cervitec Plus offers strong protection for at-risk areas.

The following products are available to support oral and dental care.

- ▶ Cervitec F, the protective varnish
- ▶ Cervitec Gel, the oral care gel
- ▶ Cervitec Liquid, the mouth rinse



*Cervitec Plus for at-risk areas  
Pictures: Dr R. Watzke, Dr F. Zimmerling,  
Ivoclar Vivadent AG, Schaan, Liechtenstein*





Cervitec Liquid, the mouth rinse

### Cervitec® Plus – advanced protection for risk areas

#### Advantages

1% chlorhexidine plus 1% thymol

Optimum flow and wetting behaviour [50; 51]

Long-term clinical experience

References, see page 19

#### Benefits

Effective bacterial control [1–4; 48; 49]

Treatment of difficult-to-reach areas [5; 8; 15; 19; 24–39; 41; 52–61]

Conditioning of the gums

#### Special tip

- ▶ Due to its favourable consistency Cervitec Gel is easy to dispense on an interdental brush and distribute in proximal areas.

#### Benefits for the dental team

- ▶ Customized solutions
- ▶ Easy to integrate into the practice routine
- ▶ Clinically proven products

#### Benefits for patients

- ▶ Products recommended by dental professionals
- ▶ Pain-free risk management
- ▶ Mild taste of all Cervitec products

#### The scientific basis

- ▶ Chlorhexidine varnish can reduce the number of acid-producing bacteria in saliva and plaque (Lipták et al. 2018).
- ▶ The management of periimplant mucositis can be supported by Cervitec Gel (Hallström et al. 2015).

### Cervitec® F – multiple protection in one preparation

#### Advantages

1400 ppm fluoride plus 0.3% chlorhexidine plus 0.5% CPC (cetylpyridinium chloride); fluoride source: ammonium fluoride

High moisture tolerance

Mild taste

#### Benefits

Only one application step: fluoridation, desensitization and support in controlling germs

Easy, fast application

High acceptance

### Cervitec® Gel – mild, effective oral care

#### Advantages

0.2% chlorhexidine plus 900 ppm fluoride plus xylitol plus provitamin D-Panthenol; fluoride source: sodium fluoride

Smooth consistency

Mild taste

#### Benefits

Powerful combination for the application on the gums, periimplant tissue, the mucous membrane and teeth

Optimum distribution on complex surfaces

High level of compliance

### Cervitec® Liquid – powerful without alcohol

#### Advantages

Xylitol plus provitamin D-Panthenol plus 0.1% chlorhexidine

Alcohol-free

Mild mint taste

#### Benefits

Care of gums and oral mucosa

Suitable for children (over 6 years) and adolescents

High level of compliance

Cervitec Gel application on denture prosthetics  
Picture: Dr F. Zimmerling, Ivoclar Vivadent AG, Schaan, Liechtenstein



# Helioseal®

## Fissure sealants with power

*Pits and fissures are exposed to a high caries risk. Because of their complex shape, even the most thorough dental hygiene practices are very often inadequately effective in these areas. Tight sealing protects these highly susceptible surfaces.*

### No chance for toothbrushes

The intricate profile of fissures prevents the bristles of toothbrushes from reaching the bottom of these structures. Consequently, harmful bacteria can colonize these sites. Food and beverages provide a constant supply of carbohydrates. As a result, caries can develop unchecked.

### Targeted defence through sealing

Sealing with Helioseal® protects these highly susceptible tooth surfaces. Helioseal covers pits and fissures with an impenetrable coating. The sealant closes up the retention niches where bacteria live and cuts off the carbohydrate supply that sustains them. What is more, the smooth surfaces that are produced with the sealant are easy to keep clean.

### Three fissure sealants for highest clinical demands

Three light-curing resin-based Helioseal sealants are available to fulfil the different sealing needs. The sealants differ from one another in terms of their delivery form and their viscosity, colour and fluoride content. However, they all show the same high clinical performance.



- ▶ Helioseal – the classic sealant
- ▶ Helioseal Clear – the clear sealant
- ▶ Helioseal F Plus – the efficient sealant

Helioseal®	Helioseal® F Plus	Helioseal® Clear
Pigmented	Pigmented	Clear, colourless
Without fluoride	With fluoride	Without fluoride
Without fillers, low viscosity	With fillers, higher viscosity	Without fillers, low viscosity

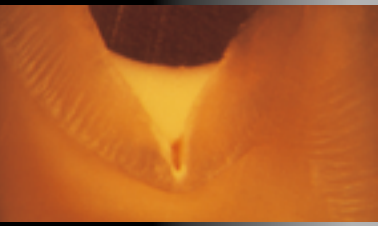




Picture:  
Professor Dr S. Zimmer,  
Germany

# Helioseal® – Helioseal® F Plus – Helioseal® Clear

The bristles of the toothbrush do not reach the bottom of the fissure.



Tight sealing of the fissure with Helioseal

## Helioseal® – the proven fissure sealants

Advantages	Benefits
Long-term successful clinical experience with deciduous and permanent teeth	Reliability
Tight bond to enamel	Long-lasting retention
Excellent retention	Effective protection against caries

### Special tip



- ▶ The enamel areas adjacent to the sealed surfaces can be protected with the fluoride-containing varnish Fluor Protector S.

### Benefits for the dental team



- ▶ Many years of clinical experience
- ▶ Long-term retention
- ▶ Reliability

### Benefits for patients

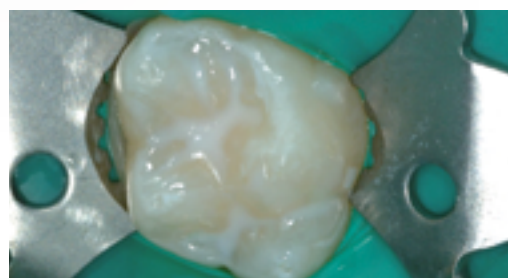


- ▶ Effective protection against caries
- ▶ Clinically proven sealant
- ▶ Long-term preservation of teeth

### The scientific basis



- ▶ Sealing of pits and fissures in deciduous and permanent teeth offers an effective method of preventing and arresting caries (Cvikl et al. 2018).



## Multiple protection for sensitive teeth

*Hypersensitive teeth are not only painful, they can also lead to the neglect of oral hygiene.*



### Exposed cervicals

In many cases, the cause of the complaints can be traced to exposed cervical surfaces with open dentin tubules. External stimuli such as hot and cold substances directly affect the unprotected tooth structure and trigger pain.

### Protective shield

VivaSens® is a film-like varnish that creates a protective shield against uncomfortable stimuli. Its innovative formulation combines a variety of synergistic mechanisms. Calcium and protein precipitates are formed, which tightly seal the dentin tubules.

### Relief for many patients

VivaSens offers patients fast relief of the pain associated with hypersensitive teeth. The causes of sensitivity are manifold:

- ▶ gingival recession
- ▶ tooth whitening
- ▶ professional tooth cleaning
- ▶ scaling and root planing
- ▶ periodontal diseases
- ▶ bruxism
- ▶ erosion.

### Special tip

- ▶ The latex-free lip and cheek retractor OptraGate® provides easy access to the oral cavity and teeth.

### Benefits for the dental team

- ▶ Individual, professional treatment
- ▶ Desensitizer for preventive and therapeutic measures
- ▶ Satisfied patients

### Benefits for patients

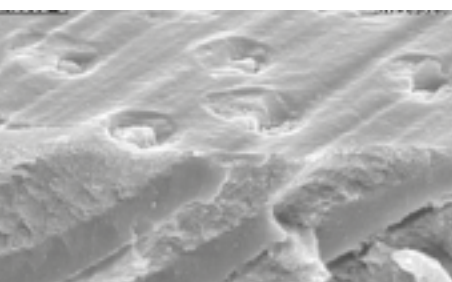
- ▶ Fast relief of pain
- ▶ Increased motivation for oral hygiene
- ▶ Long-term tooth preservation

### The scientific basis

- ▶ VivaSens forms compact precipitates. It coats the entire dentin surface and seals the dentin tubules completely (Al-Saud & Al-Nahedh 2012).



*Tightly sealed dentin tubules after the application of VivaSens (SEM image, x 3000, Ivoclar Vivadent R&D, 2003)*



### VivaSens® – for sensitive teeth

Advantages	Benefits
Tight sealing of open dentin tubules	Fast relief of pain
Optimum flow and wetting behaviour	Deep penetration of active substances
Potassium fluoride	Supplementary protection

# Skyce®

*A touch of glamour*



*The demand for a beautiful smile is greater than ever. Dental jewellery adds a glamorous touch.*



## Accentuating a smile

Skyce® tooth jewels are made of crystal glass. They are bonded to the labial surface of natural upper anterior teeth without any invasive preparation. The tooth structure remains intact. Skyce jewels can be removed gently without leaving any visible mark.



## Special tip

- ▶ Heliobond® or Tetric EvoFlow® is recommended for bonding Skyce

## Benefits for the dental team

- ▶ An additional service of the practice
- ▶ Optional cosmetic treatment
- ▶ Coordinated products

## Benefits for patients

- ▶ Professional treatment with attractive results
- ▶ No permanent change to tooth structure
- ▶ A glamorous touch

## The scientific basis

- ▶ The success of this optional cosmetic treatment involving tooth jewellery greatly depends on the good oral hygiene practices of the patient, the high-quality of the materials used and the meticulous work of the dental practitioner (Peschke 2006, Ivoclar Vivadent AG, Schaan, Liechtenstein).

## Skyce® – Tooth jewels

### Benefits

- Various sizes
- Use of proven adhesive
- Precision cut

### Advantages

- Customized jewels
- Adherence of Skyce on teeth
- Sparkling shine

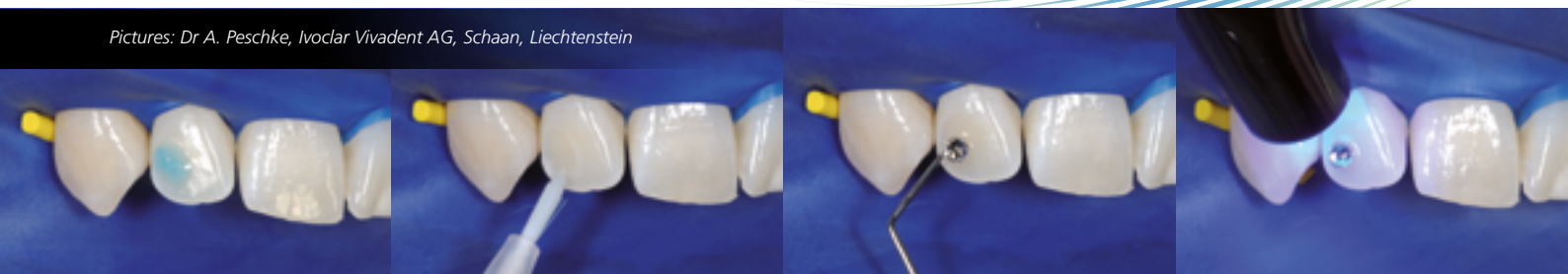
*The dental enamel is etched with phosphoric acid*

*Heliobond adhesive is applied*

*Skyce is attached to the tooth*

*Skyce is light cured from all sides*

*Pictures: Dr A. Peschke, Ivoclar Vivadent AG, Schaan, Liechtenstein*





## Serious whitening

*Naturally white teeth – a desire frequently voiced by patients. In order to fulfil this wish, Ivoclar Vivadent offers high-quality materials in light colours: for example, Tetric EvoCeram®, IPS Empress® and IPS e.max®. In addition, VivaStyle® is available for lightening undesirable stains in natural teeth.*

### Customized solutions

Various treatment options are available in accordance with the diagnosis and the individual patient needs:

- ▶ in-office or at-home treatment
- ▶ application of various active ingredient concentrations
- ▶ Application of a varnish system or a gel
  - varnish system for direct application with a brush
  - gel for application with a custom-made tray.

Starting situation



Situation after tooth whitening



After restoration\*



\*Restoration with IPS e.max Press veneers 22-12  
Pictures: Dr L. Enggist, J. Seger DT,  
Ivoclar Vivadent AG, Schaan, Liechtenstein



VivaStyle® Paint On Plus







**VivaStyle® Paint On Plus – effective lightening without a tray**

**Advantages**

Varnish system containing 6% hydrogen peroxide

Fast release of active ingredients

Provitamin D-Panthenol

**Benefits**

Controlled application and action on the right spot

Only ten minutes per application

Conditioning of the gingiva

Intensive treatments can be undertaken in the dental practice to produce fast whitening results. For this purpose, VivaStyle Paint On Plus is applied several times in succession during one appointment (Mata & Marques 2006).

**VivaStyle® – the gel-based products**

**Advantages**

Various concentrations for in-office and at-home treatments: 16% and 10% carbamide peroxide\*

Smooth consistency

Potassium nitrate

**Benefits**

Solutions for individual needs

Excellent wetting of teeth

Less sensitivity

\*16% | 10% carbamide peroxide corresponds to 5.8% | 3.6% hydrogen peroxide.

**Special tip**

- ▶ During and after tooth whitening, it is advisable to use Fluor Protector Gel, which contains calcium, fluoride and phosphate.

**Benefits for the dental team**

- ▶ Solutions for individual needs
- ▶ Clinically proven
- ▶ Possibility of introducing further dental services

**Benefits for patients**

- ▶ Professionally recommended products
- ▶ A range of products for individual needs
- ▶ Gentle whitening

**The scientific basis**

- ▶ VivaStyle Paint On Plus has been proven to effectively lighten teeth (Mata & Marques 2006).

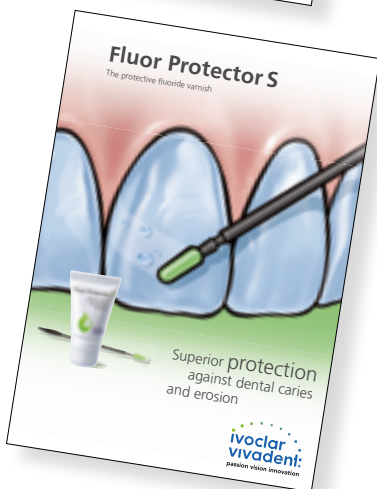
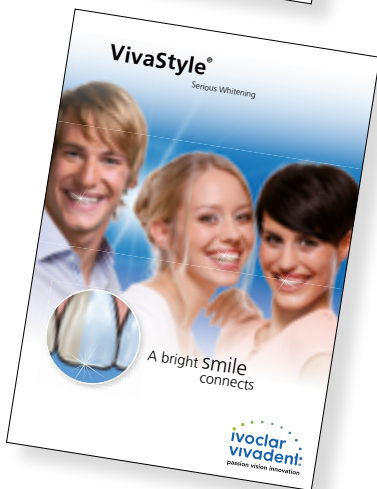
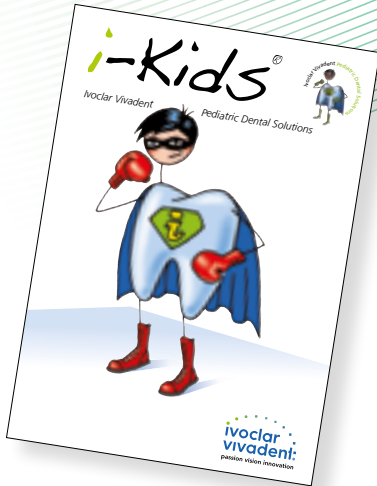


**VivaStyle® 10% | 16%**



# Professional Care

Quality products and services



## Our service to you and your patients: We are happy to assist you.

You can provide all teeth, be they healthy, restored or artificial, with the care that they need to last a long time. The Professional Care product range will support you in building up a long-lasting relationship with your patients. Special services accompany the Professional Care product range of Ivoclar Vivadent.

## We offer you

### ► Information for the dental team

- brochures
- flow charts
- treatment plans
- study results
- documentation
- articles
- videos
- presentations

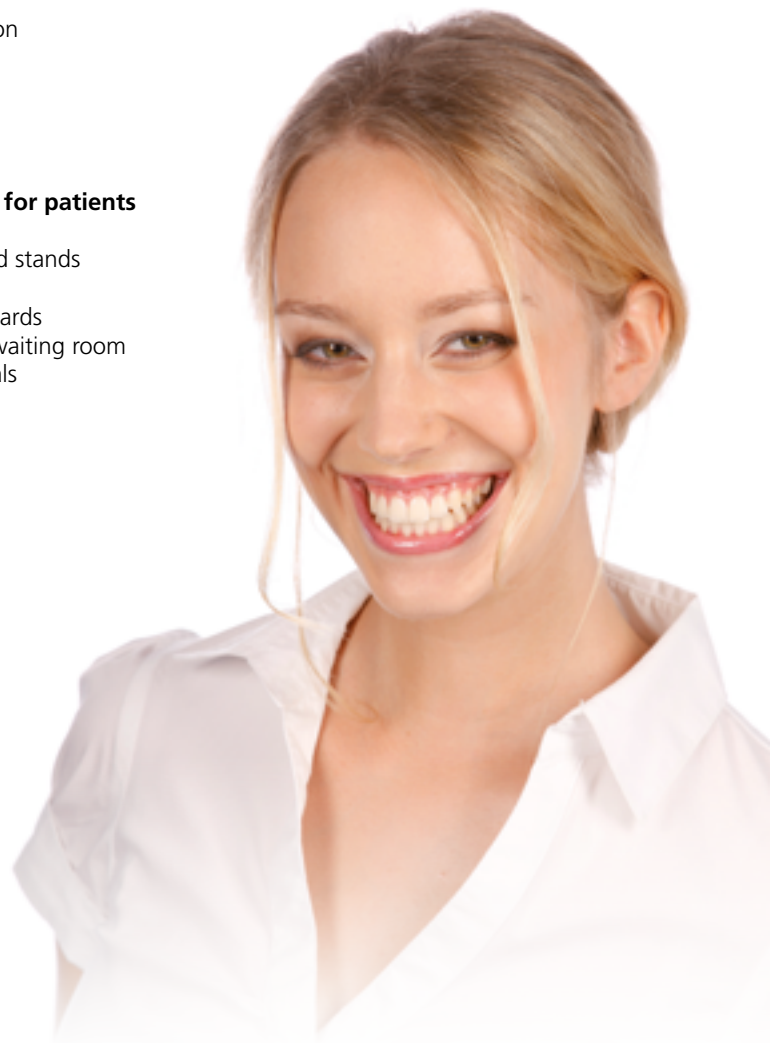
### ► Information for patients

- brochures and stands
- articles
- information cards
- clips for the waiting room
- i-Kids materials

### ► Information on education and training

We offer dental professionals a broad range of education and training measures. The dates of upcoming seminars, workshops, trade fairs and other events are provided on

[www.ivoclarvivadent.com](http://www.ivoclarvivadent.com)



# References

## Cervitec® Plus

- Zhang Q, van Palenstein Helderma WH, van't Hof MA, Truin GJ. Chlorhexidine varnish for preventing dental caries in children, adolescents and young adults: a systematic review. *Eur J Oral Sci* 2006; 114:449-455.
- Ersin NK, Eden E, Eronat N, Totu FI, Ates M. Effectiveness of 2-year application of school-based chlorhexidine varnish, sodium fluoride gel, and dental health education programs in high-risk adolescents. *Quintessence Int* 2008;39:e45-51.
- Sköld-Larsson K, Borgstrom MK, Twetman S. Effect of an antibacterial varnish on lactic acid production in plaque adjacent to fixed orthodontic appliances. *Clin Oral Investig* 2001;5:118-121.
- Petersson LG, Maki Y, Twetman S, Edwardsson S. Mutans streptococci in saliva and interdental spaces after topical application of an antibacterial varnish in schoolchildren. *Oral Microbiol Immunol* 1991;6:284-287.
- Baca P, Munoz MJ, Bravo M, Junco P, Baca AP. Effectiveness of chlorhexidine-thymol varnish for caries reduction in permanent first molars of 6-7-year-old children: 24-month clinical trial. *Community Dent Oral Epidemiol* 2002;30:363-368.
- Baca P, Clavero J, Baca AP, Gonzalez-Rodriguez MP, Bravo M, Valderama MJ. Effect of chlorhexidine-thymol varnish on root caries in a geriatric population: a randomized double-blind clinical trial. *Journal of Dentistry* 2009;37:679-685.
- Tan HP, Lo EC, Dyson JE, Luo Y, Corbet EF. A randomized trial on root caries prevention in elders. *Journal of Dental Research* 2010;89:1086-1090.
- Sköld-Larsson K, Sollenius O, Petersson LG, Twetman S. Effect of topical applications of a novel chlorhexidine-thymol varnish formula on mutans streptococci and caries development in occlusal fissures of permanent molars. *J Clin Dent* 2009;20:223-226.
- Baygin O, Tuzuner T, Ozel M-B, Bostanoglu O. Comparison of combined application treatment with one-visit varnish treatments in an orthodontic population. *Med Oral Patol Oral Cir Bucal* 2013;18:e362-370.
- Baygin O, Tuzuner T, Kusgoz A, Senel AC, Tanriver M, Arslan I. Antibacterial effects of fluoride varnish compared with chlorhexidine plus fluoride in disabled children. *Oral Health Prev Dent* 2014;12:373-382.
- Jentsch HFR, Eckert FR, Eschrich K, Stratul SI, Kneist S. Antibacterial action of Chlorhexidine/thymol containing varnishes in vitro and in vivo. *Int J Dent Hyg* 2014;12:168-173.
- Flamee S, Gizani S, Caroni C, Papaianoullis L, Twetman S. Effect of a chlorhexidine/thymol and a fluoride varnish on caries development in erupting permanent molars: a comparative study. *Eur Arch Paediatr Dent* 2015;16:449-454.
- Lipták L, Bársony N, Twetman S, Madléna M. The effect of a chlorhexidine-fluoride varnish on mutans streptococci counts and laser fluorescence readings in occlusal fissures of permanent teeth: A split-mouth study. *Quintessence Int* 2016; 47:767-773.
- Narayan A, Satyaprasad S, Anandraj S, Ananda SR, Kamath PA, Nandan S. Comparison of efficacy of three chemotherapeutic agents on Streptococcus mutans count in plaque and saliva: A randomized controlled triple blind study. *Journal of the Indian Society of Pedodontics and Preventive Dentistry* 2017; 35:174-180.
- Lipták L, Szábo K, Nagy G, Márton S, Madléna M. Microbiological Changes and Caries-Preventive Effect of an Innovative Varnish Containing Chlorhexidine in Orthodontic Patients. *Caries Res* 2018;52:272-278.
- Ben Khadra GM, Arrag EA, Alamori M, AlKadi MF. The effect of chlorhexidine-thymol and fluoride varnishes on the levels of Streptococcus mutans in saliva in children aged 6-8 years. *Indian J Dent Res* 2019;30:67-72.
- Paula VA, Modesto A, Santos KR, Gleiser R. Antimicrobial effects of the combination of chlorhexidine and xylitol. *British Dental Journal* 2010;209:E19.
- Sajjan PG, Nagesh L, Sajjanar M, Reddy SK, Venkatesh UG. Comparative evaluation of chlorhexidine varnish and fluoride varnish on plaque Streptococcus mutans count—an in vivo study. *Int J Dent Hyg* 2013; 11:191-197.
- Sköld K, Twetman S, Hallgren A, Yucel-Lindberg T, Modéer T. Effect of a chlorhexidine/thymol-containing varnish in prostaglandin E2 levels in gingival crevicular fluid. *European Journal of Oral Sciences* 1998; 106:571-575.
- Attin T, Abouassi T, Becker K, Wiegand A, Roos M, Attin R. A new method for chlorhexidine (CHX) determination: CHX release after application of differently concentrated CHX-containing preparations on artificial fissures. *Clinical Oral Investigations* 2008;12:189-196.
- Huizinga ED, Ruben JL, Arends J. Chlorhexidine and thymol release from a varnish system. *J Biol Buccale* 1991;19:343-348.
- Drebenstedt S, Zapf A, Rodig T, Mausberg RF, Ziebolz D. Efficacy of two different CHX-containing desensitizers: a controlled double-blind study. *Operative Dentistry* 2012;37:161-171.
- Sethna GD, Prabhujii ML, Karthikeyan BV. Comparison of two different forms of varnishes in the treatment of dentine hypersensitivity: a subject-blind randomised clinical study. *Oral Health Prev Dent* 2011;9:143-150.
- Araujo AM, Naspitz GM, Chelotti A, Cai S. Effect of Cervitec on mutans streptococci in plaque and on caries formation on occlusal fissures of erupting permanent molars. *Caries Res* 2002;36:373-376.
- Bratthall D, Serinirach R, Rapisuwan S, Kuratana M, Luangjarmekorn V, Lukisla K, Chaipanich P. A study into the prevention of fissure caries using an antimicrobial varnish. *Int Dent J* 1995;45:245-254.
- Gokalp S, Baseren M. Use of laser fluorescence in monitoring the durability and cariostatic effects of fluoride and chlorhexidine varnishes on occlusal caries: a clinical study. *Quintessence Int* 2005;36:183-189.
- Joharji RM, Adenubi JO. Prevention of pit and fissure caries using an antimicrobial varnish: 9 month clinical evaluation. *J Dent* 2001;29:247-254.
- Sköld-Larsson K, Fornell AC, Lussi A, Twetman S. Effect of topical applications of a chlorhexidine/thymol-containing varnish on fissure caries assessed by laser fluorescence. *Acta Odontol Scand* 2004;62:339-342.
- Plotzitz B, Kneist S, Berger J, Hetzer G. Efficacy of chlorhexidine varnish applications in the prevention of early childhood caries. *Eur J Paediatr Dent* 2005;6:149-154.
- Baca P, Munoz MJ, Bravo M, Junco P, Baca AP. Effectiveness of chlorhexidine-thymol varnish in preventing caries lesions in primary molars. *J Dent Child (Chic)* 2004;71:61-65.
- Heintze SD. Interdental mutans streptococci suppression in vivo: a comparison of different chlorhexidine regimens in relation to restorative material. *American Journal of Dentistry* 2002;15:103-108.
- Twetman S, Petersson LG. Interdental caries incidence and progression in relation to mutans streptococci suppression after chlorhexidine-thymol varnish treatments in schoolchildren. *Acta Odontol Scand* 1999;57:144-148.
- Twetman S, Petersson LG. Effect of different chlorhexidine varnish regimens on mutans streptococci levels in interdental plaque and saliva. *Caries Res* 1997;31:189-193.
- Twetman S, Hallgren A, Petersson LG. Effect of an antibacterial varnish on Mutans Streptococci in plaque from enamel adjacent to orthodontic appliances. *Caries Res* 1995;29:188-191.
- Eronat C, Alpöz AR. Effect of Cervitec varnish on the salivary Streptococcus mutans levels in the patients with fixed orthodontic appliances. *Journal of Marmara University Dental Faculty* 1997;2:605-608.
- Øgaard B, Larsson E, Glans R, Henriksson T, Birkhed D. Antimicrobial effect of a chlorhexidine-thymol varnish (Cervitec) in orthodontic patients. A prospective, randomized clinical trial. *J Orofac Orthop* 1997;58:206-213.
- Yucel-Lindberg T, Twetman S, Sköld K, Modéer T. Effect on an antibacterial dental varnish on the levels of prostanoids, leukotriene B4, and interleukin-1 in gingival crevicular fluid. *Acta Odontol Scand* 1999;57:23-27.
- Madléna M, Vitalyos G, Márton S, Nagy G. Effect of chlorhexidine varnish on bacterial levels in plaque and saliva during orthodontic treatment. *J Clin Dent* 2000;11:42-46.
- Kneist S, Zingler S, Lux C. Therapiebegleitende Massnahmen zur Kontrolle des Karies- und Demineralisationsrisikos bei kieferorthopädischer Behandlung. *ZWR Das deutsche Zahnärzteblatt* 2008;117:218-228.
- Kronenberg O, Lussi A, Ruf S. Preventive effect of ozone on the development of white spot lesions during multibracket appliance therapy. *The Angle Orthodontist* 2009;79:64-69.
- Øgaard B, Larsson E, Henriksson T, Birkhed D, Bishara SE. Effects of combined application of anti microbial and fluoride varnishes in orthodontic patients. *American Journal of Orthodontics and Dentofacial Orthopedics* 2001;120:28-35.
- Besimo CHE, Guindy JS, Lewetog D, Meyer J. Prevention of bacterial leakage into and from prefabricated screw-retained crowns on implants in vitro. *Int J of Oral & Maxillofacial Implants* 1999;14:654-660.
- Johansson LA, Ekfeldt A, Petersson LG, Edwardsson S. Antimicrobial effect of a chlorhexidine varnish, Cervitec in healing caps in osseointegrated prosthetic treatment. *Swed Dent J* 1994;16:255-256.
- Besimo CHE, Guindy JS, Lewetog D, Besimo RH, Meyer J. Marginal Passgenauigkeit und Bakteriendichtigkeit von verschraubten implantatgetragenen Suprastrukturen. *Parodontologie* 2000;3:217-229.
- Nekkalapudi S, Mikulski L, Gurund S, Appachu KM, Andrea S. Antimicrobial effect of a chlorhexidine varnish as coating on implant abutments. *IADR Abstract* 2015.
- Wallman C, Birkhed D. Effect of chlorhexidine varnish and gel on mutans streptococci in margins of restorations in adults. *Caries Res* 2002;36:360-365.
- Schoppe J, Lendenmann U. Hemmstofftests mit Cervitec Plus auf verschiedenen Dentalmaterialien. Internal Investigation Report, Ivoclar-Vivadent AG, Schaan, Principality of Liechtenstein 2019.
- Duskova J, Broukal Z, Kratky M. Inhibition of the oral streptococcus mutans - transfer in the mother and child care: results in mothers and infants in the 3rd year of study. *Caries Res* 2000;34:347.
- Dubielecka M, Slotwinska SM. Suppression of caries in mothers and caries risk in offspring. *Journal of Dental Research* 2005;84 (Spec Iss B): Abstract # 0068.
- Bolis C, (George) MB, Grégoire\* G, Roulet J, Huwig A, Weigand C. Desensitizing varnish with improved antimicrobial properties. Poster, Ivoclar-Vivadent AG, Schaan, Principality of Liechtenstein; \*Paul Sabatier University, Toulouse, France 2007.
- Bolis C, Lendenmann U. Applikation und Schichtbildung von Cervitec Plus auf Zähnen. Internal Investigation Report, Ivoclar-Vivadent AG, Schaan, Principality of Liechtenstein 2019.
- Huizinga ED, Ruben J, Arends J. Effect of an antimicrobial-containing varnish on root demineralisation in situ. *Caries Res* 1990;24:130-132.
- Lynch E, Beighton D. Short-Term Effects of Cervitec on the Microflora of Primary Root Caries Lesions Requiring Restoration. *Caries Res* 1993;27:236.
- Marren PV, Lynch E, Heath MR. Cervitec's effect on plaque mutans streptococci covering healthy root surfaces. *Journal of Dental Research* 1997;76:93.
- Ekenbäck SB, Linder LE, Lönnies H. Effect of four dental varnishes on the colonization of cariogenic bacteria on exposed sound root surfaces. *Caries Res* 2000;34:70-74.
- Benz C, Benz B, El-Mahdy KR, Hickel R. The effect of preventive regimens on dentate elderly after 3 years. *Journal of Dental Research* 2002;81(Spec Iss A): Abstract #2734.
- Brailsford SR, Fiske J, Gilbert S, Clark D, Beighton D. The effects of the combination of chlorhexidine/thymol- and fluoride-containing varnishes on the severity of root caries lesions in frail institutionalised elderly people. *Journal of Dentistry* 2002;30:319-324.
- Haukali G, Poulsen S. Effect of a varnish containing chlorhexidine and thymol (cervitec) on approximal caries in 13- to 16-year-old schoolchildren in a low caries area. *Caries Research* 2003;37:185-189.
- Johnson G, Almqvist H. Non-invasive management of superficial root caries lesions in disabled and infirm patients. *Gerodontology* 2003;20:9-14.
- Wicht MJ, Haak R, Lummert D, Noack MJ. Treatment of root caries lesions with chlorhexidine-containing varnishes and dentin sealants. *Am J Dent* 2003;16:25A-30A.
- Zhang Q, van 't Hof MA, Truin GJ, Bronkhorst EM, van Palenstein Helderma WH. Caries-inhibiting effect of chlorhexidine varnish in pits and fissures. *J Dent Res* 2006;85:469-472.
- Dambacher A. Kundenzufriedenheitsanalyse Cervitec Plus. Customer Survey, Ivoclar-Vivadent AG, Schaan, Principality of Liechtenstein 2009.



# Ivoclar Vivadent®

*For a bright and healthy smile*

*To satisfy your esthetic dentistry needs, Ivoclar Vivadent offers quality restorative and prosthodontic materials, such as Tetric EvoCeram®, IPS Empress®, IPS e.max® and SR Phonares® II.*

*These products will allow you to fulfil your own personal standards as well as the individual requirements of your patients regarding function and esthetics. Teeth and mouth require professional Oral Health*

*Management solutions to meet these high standards. The Professional Care Program from Ivoclar Vivadent is there to assist you.*



Production and Distribution:  
**Ivoclar Vivadent AG**  
Bendererstrasse 2  
9494 Schaan  
Liechtenstein  
Tel. +423 235 35 35  
Fax +432 235 33 60  
[www.ivoclarvivadent.com](http://www.ivoclarvivadent.com)

Descriptions and data  
constitute no warranty  
of attributes.  
© Ivoclar Vivadent AG,  
Schaan, Liechtenstein.  
EN/2020-01-22

**ivoclar  
vivadent**®  
passion vision innovation